

Praeludium et Fuga XIII

BWV 882

J. SEBASTIAN BACH

PETER H. BESSELING

Measures 1-4 of the Praeludium. The treble clef staff contains a series of eighth and sixteenth notes, while the bass clef staff is mostly empty with a few notes in the final measure.

Measures 5-8 of the Praeludium. The treble clef staff continues with a series of eighth and sixteenth notes, while the bass clef staff has a few notes in the final measure.

Measures 9-12 of the Praeludium. The treble clef staff continues with a series of eighth and sixteenth notes, while the bass clef staff has a few notes in the final measure.

Measures 13-15 of the Praeludium. The treble clef staff continues with a series of eighth and sixteenth notes, while the bass clef staff has a few notes in the final measure.

Measures 16-19 of the Praeludium. The treble clef staff continues with a series of eighth and sixteenth notes, while the bass clef staff has a few notes in the final measure.

2

Draeludium et Fuga XIII - PIANO I

20

Measures 20-22 of the musical score. The key signature is D major (two sharps). The melody in the right hand features eighth and sixteenth notes, while the left hand provides a steady eighth-note accompaniment. Measure 22 ends with a repeat sign.

23

Measures 23-25 of the musical score. The right hand continues with a melodic line of eighth and sixteenth notes. The left hand is silent, indicated by whole rests.

26

Measures 26-28 of the musical score. Measures 26 and 27 include trills (tr) in the right hand. The left hand continues with its eighth-note accompaniment. Measure 28 ends with a repeat sign.

29

Measures 29-31 of the musical score. Measures 29 and 31 include trills (tr) in the right hand. The left hand continues with its eighth-note accompaniment. Measure 31 ends with a repeat sign.

32

Measures 32-34 of the musical score. The right hand features a melodic line with some accidentals (sharps and naturals). The left hand continues with its eighth-note accompaniment. Measure 34 ends with a repeat sign.

35

Measures 35-37 of the musical score. The right hand continues with a melodic line. The left hand continues with its eighth-note accompaniment. Measure 37 ends with a repeat sign.

Draeludium et Fuga XIII - PIANO I

3

38

Trill (tr) on measure 38.

41

44

Trill (tr) on measure 44.

48

51

Trill (tr) on measure 51.

55

59

Measures 59-62 of the Draeludium. The treble clef staff contains a melodic line with eighth and sixteenth notes, including a trill in measure 60. The bass clef staff is mostly empty, with a few notes in measure 62.

63

Measures 63-66 of the Draeludium. The treble clef staff continues the melodic line with eighth and sixteenth notes. The bass clef staff remains mostly empty.

67

Measures 67-70 of the Draeludium. The treble clef staff features a trill in measure 67 and continues with eighth and sixteenth notes. The bass clef staff has a few notes in measures 67 and 68.

71

Measures 71-74 of the Draeludium. The treble clef staff continues the melodic line. The bass clef staff has a few notes in measures 71 and 72.

Fuga

Measures 75-78 of the Fuga. The treble clef staff starts with a whole rest, followed by a triplet of eighth notes in measure 76, a trill in measure 77, and continues with eighth and sixteenth notes. The bass clef staff has a triplet of eighth notes in measure 76 and is mostly empty.

7

Measures 79-82 of the Fuga. The treble clef staff continues the melodic line with eighth and sixteenth notes. The bass clef staff has a trill in measure 79 and continues with eighth and sixteenth notes.

11

15

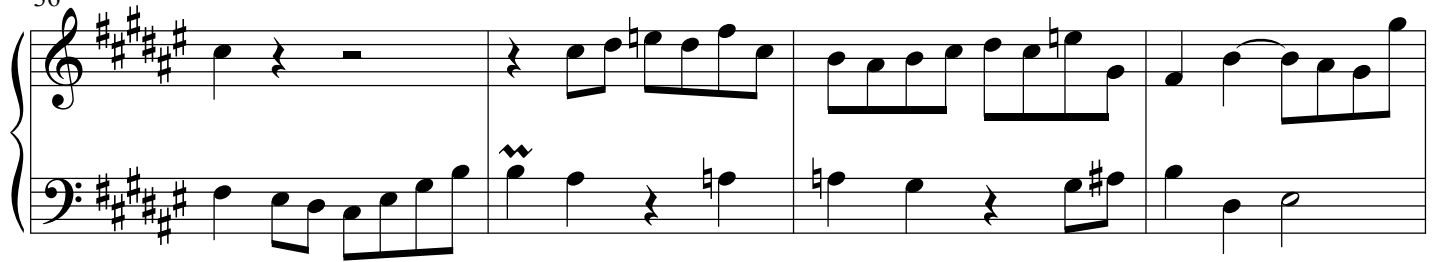
20

24

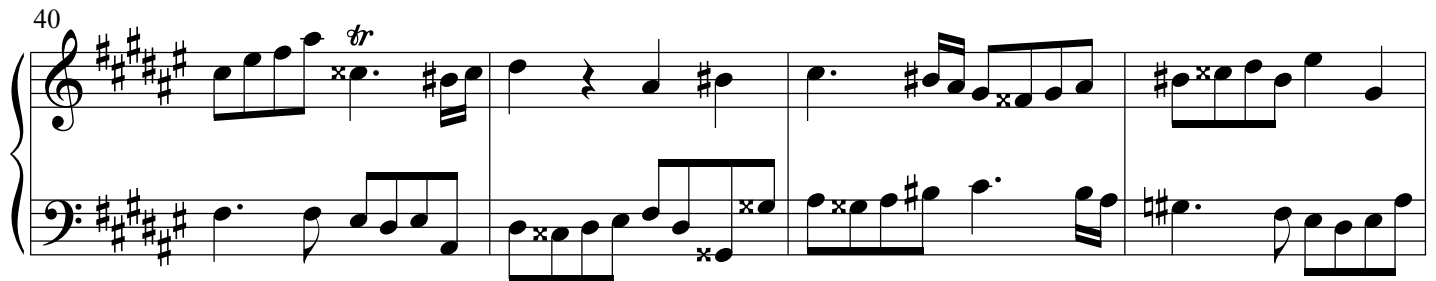
28

32

36



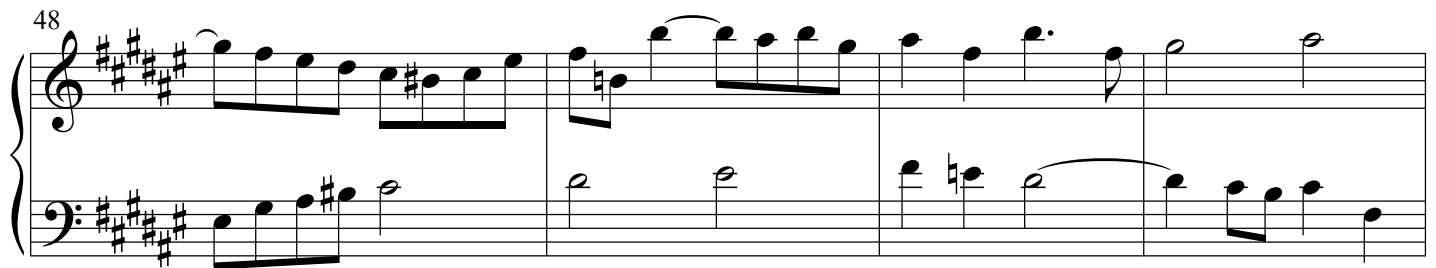
40



44



48



52



56



Draeludium et Fuga XIII - PIANO I

7

60

Measures 60-63. Treble clef: whole notes with accents. Bass clef: eighth-note patterns with some accidentals.

64

Measures 64-68. Treble clef: whole notes with accents. Bass clef: eighth-note patterns with a trill in measure 64.

69

Measures 69-72. Treble clef: whole rests. Bass clef: eighth-note patterns with a trill in measure 70.

73

Measures 73-76. Treble clef: whole rests. Bass clef: eighth-note patterns with a trill in measure 74.

77

Measures 77-80. Treble clef: whole notes with accents. Bass clef: eighth-note patterns.

81

Measures 81-84. Treble clef: whole notes with accents. Bass clef: eighth-note patterns. Ends with a final chord in measure 84.