

Praeludium et Fuga XV

BWV 884

J. SEBASTIAN BACH

PETER H. BESSELING

5

10

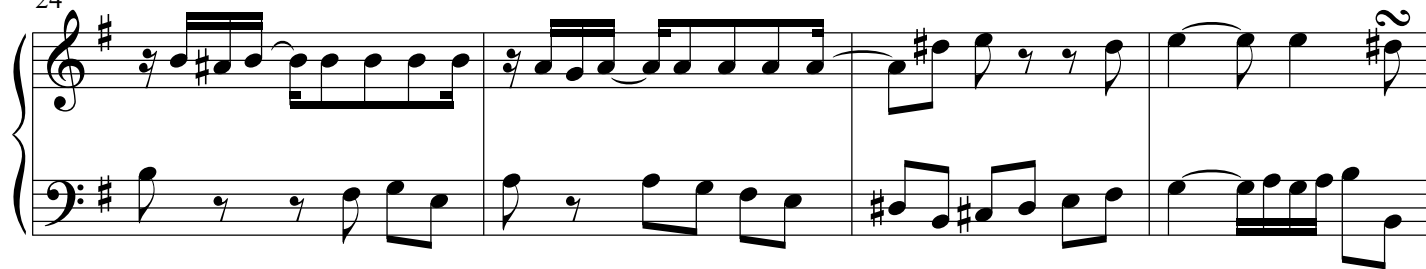
15

19

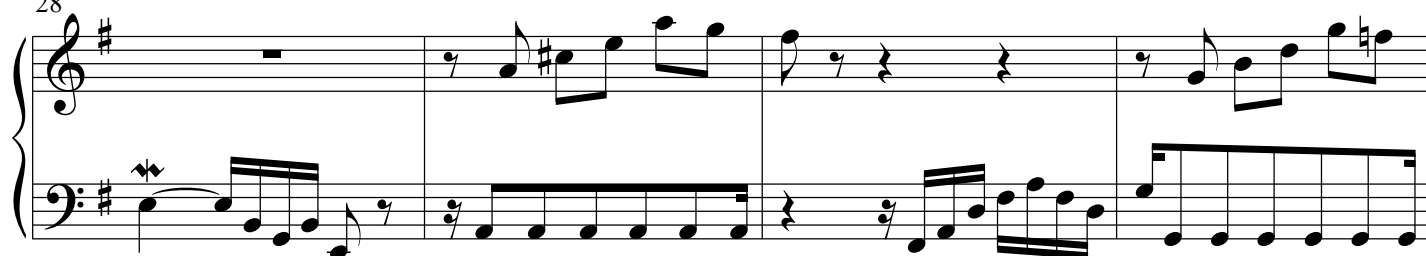
2

Draeludium et Fuga XV - PIANO II

24



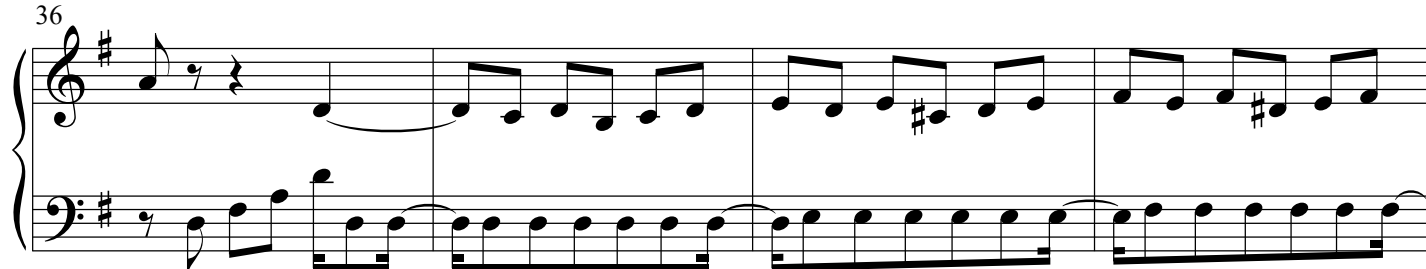
28



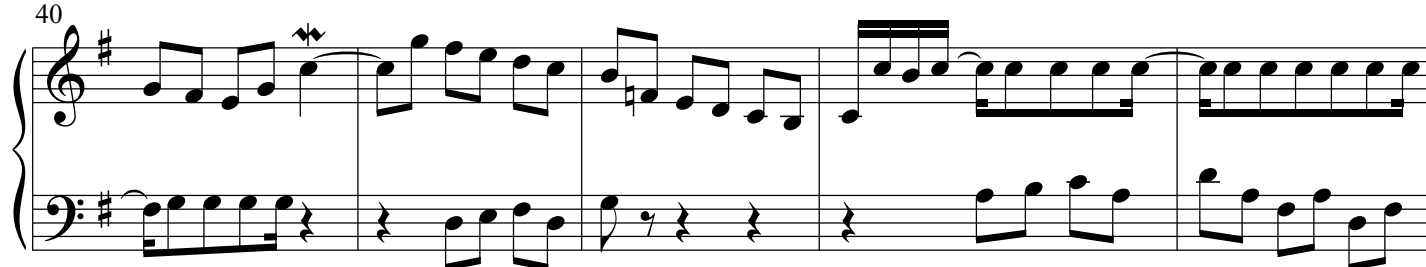
32



36



40



45



Fuga

Measures 1-12 of the Fuga. The piece is in G major (one sharp) and 3/4 time. Measures 1-12 are marked with a '7' above the staff, indicating a seven-measure phrase. The notation shows a complex rhythmic pattern with many beamed sixteenth and thirty-second notes, primarily in the right hand, while the left hand has rests.

Measures 13-18 of the Fuga. Measure 13 is marked with a '13' above the staff. The right hand continues with beamed sixteenth notes, while the left hand enters with a steady eighth-note accompaniment.

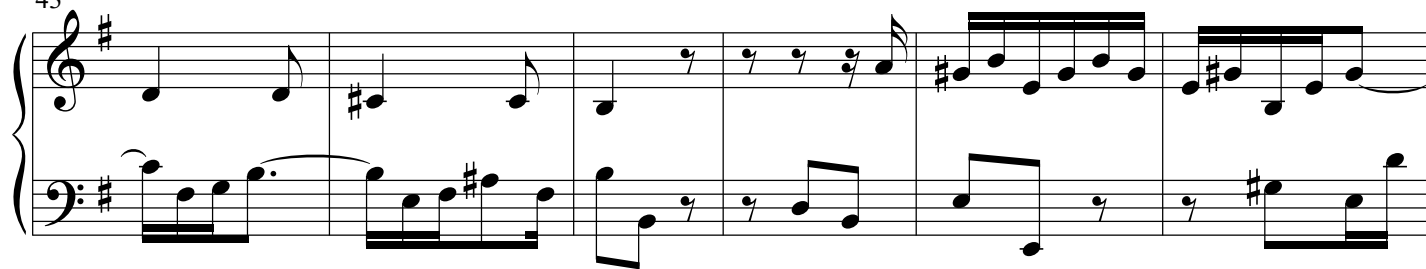
Measures 19-24 of the Fuga. Measure 19 is marked with a '19' above the staff. The right hand features a melodic line with eighth and sixteenth notes, and the left hand continues with the eighth-note accompaniment.

Measures 25-30 of the Fuga. Measure 25 is marked with a '25' above the staff. The right hand has a more active melodic line with some rests, and the left hand continues with the eighth-note accompaniment.

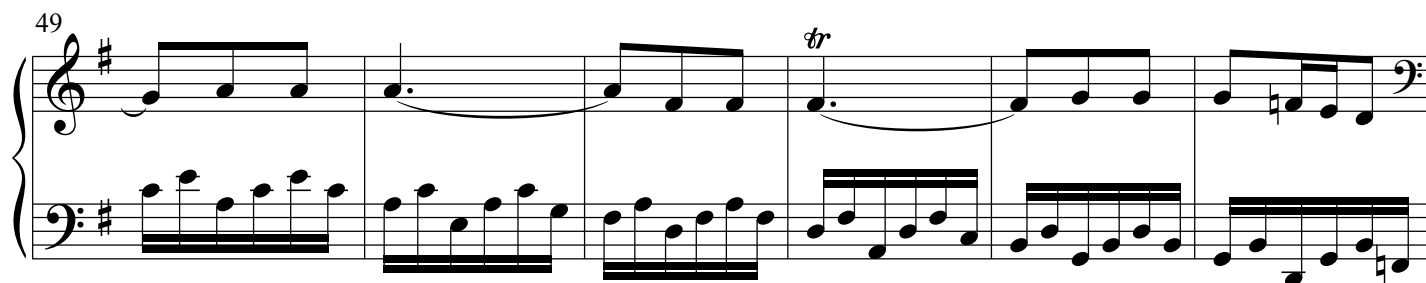
Measures 31-36 of the Fuga. Measure 31 is marked with a '31' above the staff. The right hand continues with a melodic line, and the left hand maintains the eighth-note accompaniment.

Measures 37-42 of the Fuga. Measure 37 is marked with a '37' above the staff. The right hand has a melodic line with some rests, and the left hand continues with the eighth-note accompaniment.

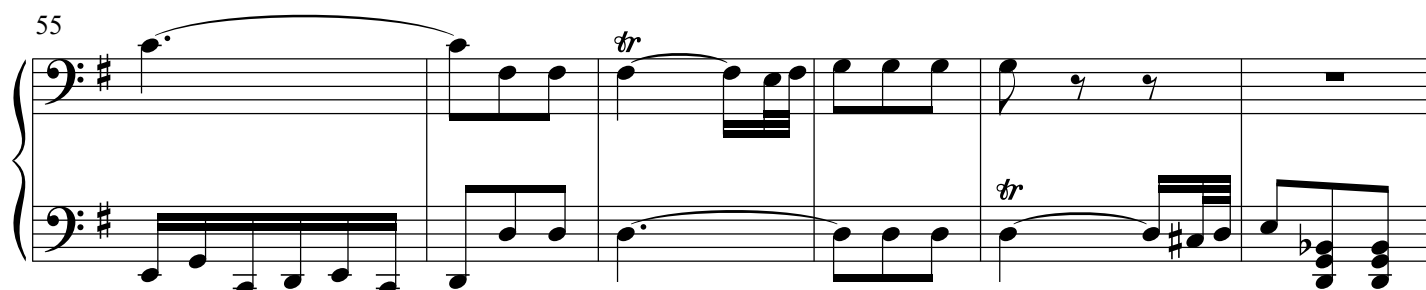
43



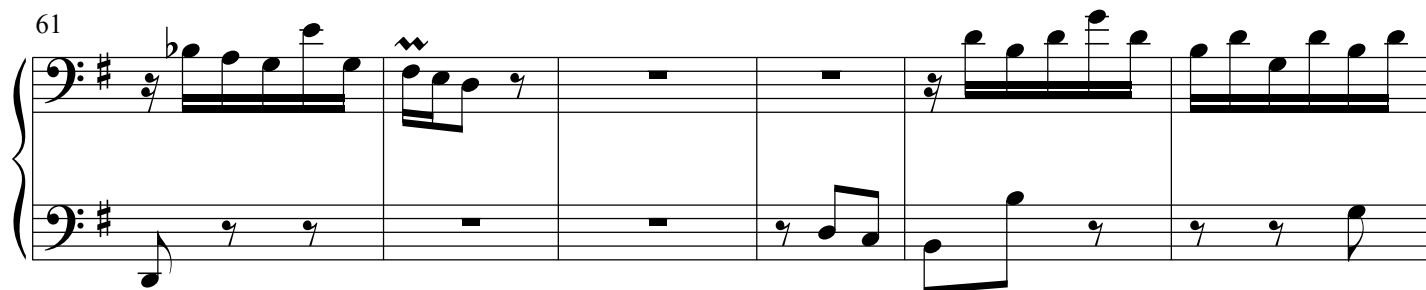
49



55



61



67

