

Oboe 1

Concerto stilizzato

paraphrase on a motif by Brahms

PARTE PRIMA: "CADENZA"

Tamás Beischer-Matyó

Adagio $\text{♩} = 60$ Cadenza

22

25

tr

ppp \swarrow *ff* *ff*

30

poco rall. Poco sostenuto

ff *ff*

PARTE SECONDA: "FORMA-SONATA"

Allegro con brio $\text{♩} = 180$ ($\text{♩} = 60$)

35

40

tr

ff *ff* *ff* *ff* *pp*

3

44

C. a., Bsn. 1

45

D. bsn., S. pno., D. b.

50

mf *f*

55

2

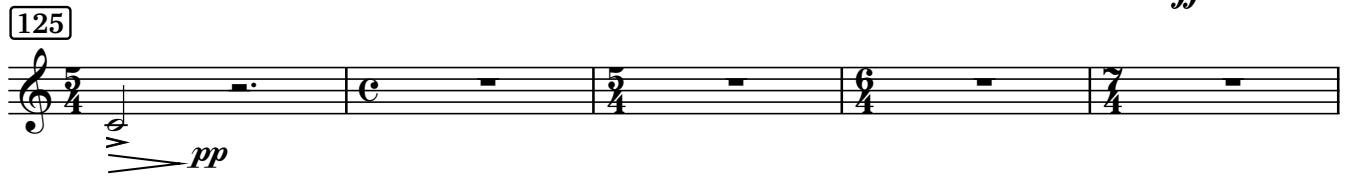
Copyright Tamás Beischer-Matyó, 1996

www.beischermatyó.hu/concerto_stilizzato

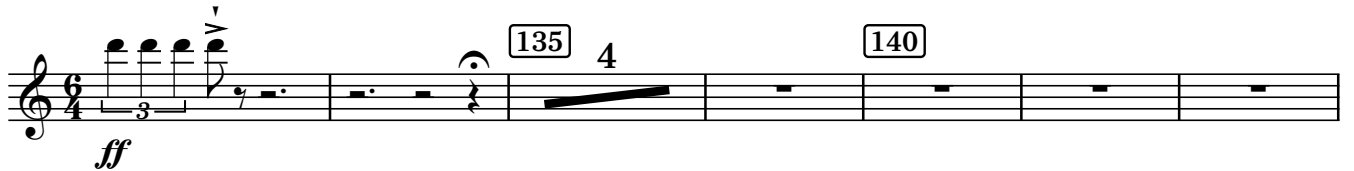
This work is licensed under the Creative Commons Attribution-NonCommercial-NoDerivatives 4.0 International License.
To view a copy of this license, visit www.creativecommons.org/licenses/by-nc-nd/4.0/

Musical score for Oboe 1, measures 75-115. The score includes various musical notations such as triplets, slurs, and dynamic markings (*f*, *ff*, *f molto espressivo*, *f espressivo*, *f*, *ff*, *ff grandioso*). It also features tempo changes (*poco ritard.*, *Sostenuto*, *allarg.*, *a tempo*) and articulation (*trb*, *S. pno.*). Measure numbers 75, 80, 85, 90, 95, 100, 105, and 110 are indicated in boxes.

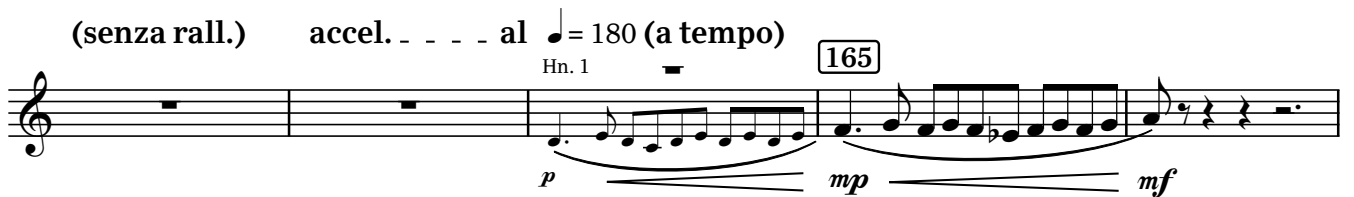
Measures 75-80: *f*, *ff*, *f molto espressivo*.
 Measures 80-85: *f espressivo*.
 Measures 85-90: *f*, *ff*.
 Measures 90-95: *ff*, *ff grandioso*.
 Measures 95-100: *allarg.*, *a tempo*.
 Measures 100-105: *trb*, *S. pno.*.
 Measures 105-110: *poco ritard.*, *a tempo*, *poco ritard.*, *a tempo*.
 Measures 110-115: *f*, *f espressivo*.



molto rall. a tempo



rall. Meno allegro ♩ = 120
15



PARTE TERZA: "LIED"



205 a tempo 3 210 2 4

molto rall. più adagio e molto flessibile ♩ = 48 poco a poco allarg. 220

PARTE QUARTA: "RONDÒ"

. . . a tempo (♩ = 48) rall. Allegro vivace ♩ = 180 (♩ = 90) B. cl. 225

230 5 235 trb trb tr# trb

poco rall. a tempo rall. a tempo S. pno. 8 245 f

Fl., Cl., Str. 250 f p ff

255 2 mf < f

260 265

8 Picc. Fl.

4 3 3 3

pp

270

p *f*

275

p

4 3

S. pno.

290

2 2

p marcato *f* *f*

295 poco ritard. a tempo

310

11

Tpt. 1 Cl. 1 Tpt. 1 +Cl. 1

p *f* *ff* *ff*

rall. ----- Meno vivace ♩ = 144

315 325

10 14

340 **rall.** **a tempo**
Tpt. 1 S. pno.
mp

ff **rall.** - - - - -

350 **Allegro vivace** ♩ = 180
f marcato

360

365 370

375

poco rall. Sostenuto ♩ = 48 (♩ = 144)
380 **ff grandioso**

allarg. - - - **a tempo** ♩ = 180
385 *tr*

PARTE QUINTA: "CONCLUSIONE"

390 *rall. molto* *a tempo* ♩ = 180 395

fff *sf* *sf* *sf*

400 *ff marc.*

405

410

420 *tr* *tr* *ff* *ff*

C. a., B. cl.

f *ff* *pp*

rall. *Poco sostenuto* *a tempo, ma poco agitato*

425 *p* *ff* *ff*

430 *tr* *ff* *ff* *rall. molto* *a tempo, molto pomposo* 435

440