

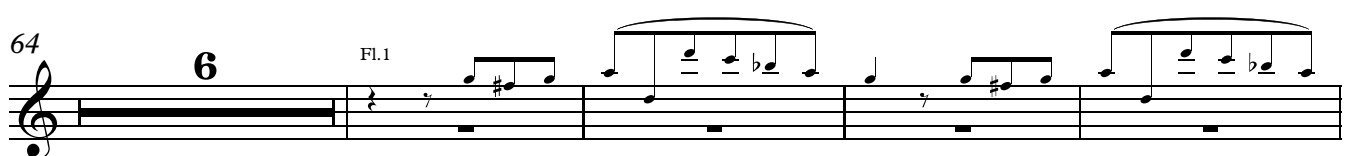
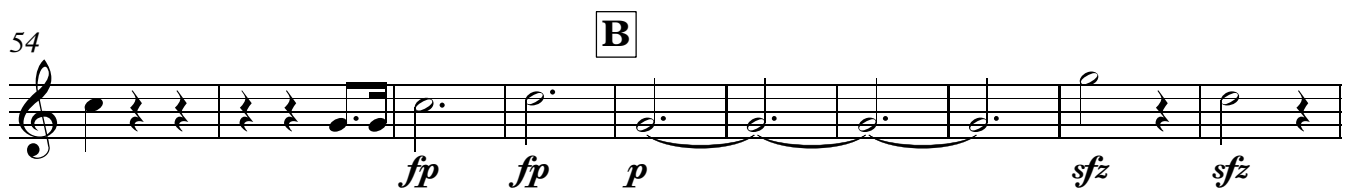
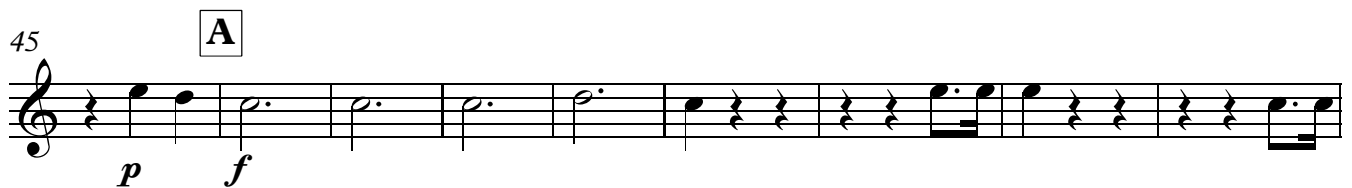
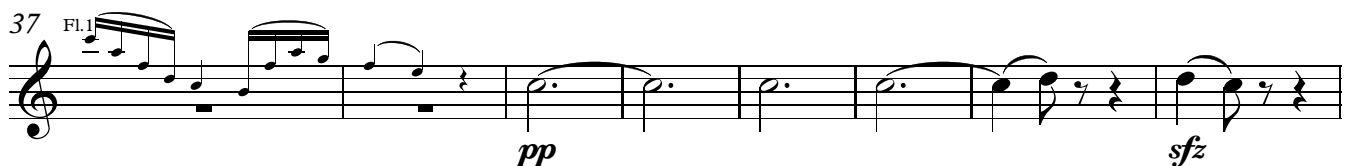
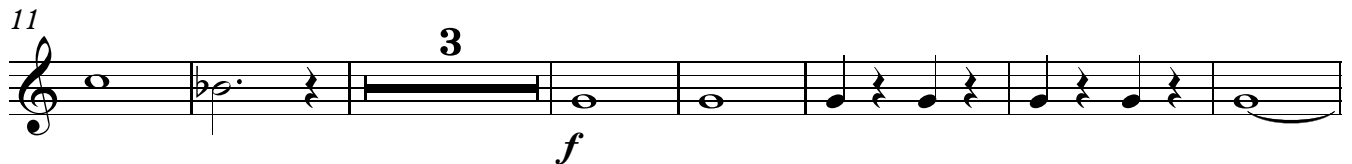
1st Horn in E♭

Louis Spohr

Symphony No.1, Op. 20

Adagio

I.



1st Horn in Eb

3

122 **E** 8 Ob.1

134 **F** 2 *f* *sfz* *sfz*

144 **G** *p* *p*

153 1. 2 2. 6 *pp*

165 Fl.1 **H** *sfz* *pp*

173 **I** 11 Fl.1 *f*

189 **J** 2 5 *f*

202 *p* *pp*

213 **K** 4 *f*

223 10

236 **L** 8

1st Horn in Eb

4

244 **M**

Ob.1

249

pp

256 **N**

f *ff* *p* *ff*

272

p

288 **P**

p *p*

300 **Q**

f

306

sfz *sfz*

313 **R**

p *fp* *f*

324 **S**

332

II.

1 **Larghetto con moto**

14 **A**

20 **2** **3**

31 **B** **7**

41 **C** **10**

58 **D** **2**

65 **E** **3**

74 **F** **6** **4**

91 **G** **2**

101 **H**

112 **I** **9**

Vln. 1

Vc.

Fl. 1

p

pp

f

mf

mf > pp

p cresc.

mf

pp

sfz.

simile

Scherzo. Allegro

III.

1

4

9

10

23 **A** 8 Vln. 1

36 3 3

48 **B** Vln. 1

57 7

71 **C** 7 Fl. 1

85 **D** 9

99 4 8

115 **E** 6 Fl. 1

f

f

p

pp

ff

p

f

f

127 **2** *sfz* *p* *pp*

136 **2** **F** **2** *p* *fp* *fp* *f*

148 *pp* *pp*

154 *p*

159 **Trio** *2nd time only* **8** *Fl.1* **3** **3** *f*

173 **G** *f* **3** *ff* *fp* *p* *cresc.*

181 *f* **3** *p* *f* **3** *p* *sfz* *sfz*

187 **8** *Fl.1* **3** **3** *f* **3**

199 **H** **3** *Fl.1* **3** **3** **3** **3** *f*

208 *f* *f* *f* *p* *Cl.1*

215 **3** *p* *sfz* **3** **3** **5**

1st Horn in Eb

8

224 **I** Vln. 1

229 **2** *p*

236 **J** *f* **4** *f*

247 **K** **10** **10** Fl. 1

271 **3** *p* *pp* *pp* **3**

283 **L** Vln. 1 *f*

290 **7** *p*

302 **M** *ff* **5** Fl. 1

313 **9** *p*

329 **N** *f* **4** *f*

340 **O** **8** **6** Fl. 1

1st Horn in E♭

9

359

f *sfz* *p*

366

pp *p*

374 **P**

fp *fp* *f* *pp*

385

pp *p* *f*

Finale. Allegretto

IV.

1 7 Vln. 1 3 3

11 2

17 **A** 9

32 **B** *p* *f*

39 **C** 3 *f*

49 **D** 2 7 Cl.1 3 3

61 *p*

67 **E** 5 *ff* 6

81 **F** Vln. 1 3 3 3 3 3 3

85 5 3 *f*

94 **G**

p *pp*

101

110 **H** *8* *Vc.* *3* *3* *3*

121 *fp* *fp*

128 **I** *7* *Vln. 1* *3* *3* *3* *3* *3* *f*

139 **J** *5* *Cl. 1* *3*

148 **K** *f* *f* *3* *fp*

155 *fp* *ff*

162 **L** *p*

170 *p* *2*

1st Horn in Eb

12

179 **M**

p

185

2 **2**

193 **N**

198

f *f*

203 **O**

3 *f*

212

fp *fp* *ff*

219 **P**

7 Cl.1 **3** *p*

231 **Q**

cresc. *f*

240 **3** Fl. 1

247 **R** **5** *ff* *f*

258 **S** *p*

266 *cresc.* *f* *ff*

Detailed description of the musical score: The score is for the 1st Horn in Eb. It consists of four staves of music. The first staff (measures 240-246) starts with a triplet of eighth notes, followed by a half note, and then a half note. The second staff (measures 247-257) begins with a rest, followed by a half note and a half note, with a 'ff' dynamic. It then has a rest, a half note, and a half note, with a 'f' dynamic. The third staff (measures 258-265) starts with a rest, followed by a half note and a half note, with a 'p' dynamic. It then has a rest, a half note, and a half note. The fourth staff (measures 266-272) begins with a crescendo, followed by a half note and a half note, with 'f' and 'ff' dynamics. There are also some markings like 'Fl. 1', 'R', and 'S' above the staves.