

Sonata II

BWV 526

J. SEBASTIAN BACH

ARR. PETER H. BESSELING

Vivace

4

7

10

13

2

Sonata II - PIANO II

16

Measures 16-18 of the Sonata II - PIANO II. The music is in G-flat major (three flats) and 4/4 time. Measure 16 features a treble staff with a melodic line and a bass staff with a supporting line. Measure 17 continues the melodic development. Measure 18 shows a continuation of the bass line with some rests.

19

Measures 19-21 of the Sonata II - PIANO II. Measure 19 has a busy treble staff with many sixteenth notes and a bass staff with a steady eighth-note accompaniment. Measure 20 continues this texture. Measure 21 features a treble staff with a melodic phrase and a bass staff with a supporting line.

22

Measures 22-24 of the Sonata II - PIANO II. Measure 22 starts with a treble staff containing a wavy line and a bass staff with a melodic line. Measure 23 continues the melodic development in the bass. Measure 24 shows a continuation of the bass line with some rests.

25

Measures 25-27 of the Sonata II - PIANO II. Measure 25 has a treble staff with a melodic line and a bass staff with a supporting line. Measure 26 continues the melodic development. Measure 27 shows a continuation of the bass line with some rests.

28

Measures 28-30 of the Sonata II - PIANO II. Measure 28 features a treble staff with a melodic line and a bass staff with a supporting line. Measure 29 continues the melodic development. Measure 30 shows a continuation of the bass line with some rests.

31

Measures 31-33 of the Sonata II - PIANO II. Measure 31 has a treble staff with a melodic line and a bass staff with a supporting line. Measure 32 continues the melodic development. Measure 33 shows a continuation of the bass line with some rests.

Sonata II - PIANO II

3

34

36

39

42

44

47

4

Sonata II - PIANO II

50

Measures 50-52 of the piano part. The music is in B-flat major (two flats) and 4/4 time. Measure 50 features a complex rhythmic pattern in the right hand with eighth and sixteenth notes, and a half note in the left hand. Measure 51 continues the right-hand melody with a trill on the first beat. Measure 52 shows a continuation of the right-hand melody with a trill on the first beat. The left hand provides a steady accompaniment of quarter notes.

53

Measures 53-55 of the piano part. Measure 53 features a complex rhythmic pattern in the right hand with eighth and sixteenth notes, and a half note in the left hand. Measure 54 continues the right-hand melody with a trill on the first beat. Measure 55 shows a continuation of the right-hand melody with a trill on the first beat. The left hand provides a steady accompaniment of quarter notes.

56

Measures 56-58 of the piano part. Measure 56 features a complex rhythmic pattern in the right hand with eighth and sixteenth notes, and a half note in the left hand. Measure 57 continues the right-hand melody with a trill on the first beat. Measure 58 shows a continuation of the right-hand melody with a trill on the first beat. The left hand provides a steady accompaniment of quarter notes.

59

Measures 59-61 of the piano part. Measure 59 features a complex rhythmic pattern in the right hand with eighth and sixteenth notes, and a half note in the left hand. Measure 60 continues the right-hand melody with a trill on the first beat. Measure 61 shows a continuation of the right-hand melody with a trill on the first beat. The left hand provides a steady accompaniment of quarter notes.

62

Measures 62-64 of the piano part. Measure 62 features a complex rhythmic pattern in the right hand with eighth and sixteenth notes, and a half note in the left hand. Measure 63 continues the right-hand melody with a trill on the first beat. Measure 64 shows a continuation of the right-hand melody with a trill on the first beat. The left hand provides a steady accompaniment of quarter notes.

65

Measures 65-67 of the piano part. Measure 65 features a complex rhythmic pattern in the right hand with eighth and sixteenth notes, and a half note in the left hand. Measure 66 continues the right-hand melody with a trill on the first beat. Measure 67 shows a continuation of the right-hand melody with a trill on the first beat. The left hand provides a steady accompaniment of quarter notes.

Sonata II - PIANO II

5

68

Measures 68-69. Measure 68 features a wavy line above the treble staff. The music is in a key with three flats and a common time signature.

70

Measures 70-72. Measure 70 features a wavy line above the treble staff. The music is in a key with three flats and a common time signature.

73

Measures 73-75. Measure 73 features a wavy line above the treble staff. The music is in a key with three flats and a common time signature.

76

Measures 76-78. Measure 76 features a wavy line above the treble staff. The music is in a key with three flats and a common time signature.

Largo

Measures 79-81. Measure 79 features a wavy line above the treble staff. The music is in a key with three flats and a common time signature.

4

Measures 82-85. Measure 82 features a wavy line above the treble staff. The music is in a key with three flats and a common time signature.

6

Sonata II - PIANO II

8

Measures 6-8 of the musical score. The key signature is B-flat major (two flats). The melody in the right hand features eighth-note runs and quarter notes, while the left hand provides a steady eighth-note accompaniment.

14

Measures 14-15 of the musical score. The right hand continues with eighth-note patterns, and the left hand maintains the eighth-note accompaniment.

19

Measures 19-22 of the musical score. The right hand features a series of eighth-note runs, and the left hand continues with the eighth-note accompaniment.

23

Measures 23-26 of the musical score. The right hand has a more complex eighth-note pattern, and the left hand continues with the eighth-note accompaniment.

27

Measures 27-31 of the musical score. The right hand features a series of eighth-note runs, and the left hand continues with the eighth-note accompaniment.

32

Measures 32-35 of the musical score. The right hand continues with eighth-note patterns, and the left hand maintains the eighth-note accompaniment.

Sonata II - PIANO II

7

35

Measures 35-37. Treble clef: 35 (G4, A4, B4, C5), 36 (B4, A4, G4, F4), 37 (E4, D4, C4, B3). Bass clef: 35 (C3, D3, E3, F3), 36 (G3, A3, B3, C4), 37 (D4, E4, F4, G4).

38

Measures 38-40. Treble clef: 38 (F4, E4, D4, C4), 39 (B3, A3, G3, F3), 40 (E3, D3, C3, B2). Bass clef: 38 (F3, E3, D3, C3), 39 (B2, A2, G2, F2), 40 (E2, D2, C2, B1).

41

Measures 41-44. Treble clef: 41 (A3, G3, F3, E3), 42 (D3, C3, B2, A2), 43 (G2, F2, E2, D2), 44 (C2, B1, A1, G1). Bass clef: 41 (A2, G2, F2, E2), 42 (D2, C2, B1, A1), 43 (G1, F1, E1, D1), 44 (C1, B0, A0, G0).

45

Measures 45-48. Treble clef: 45 (F4, E4, D4, C4), 46 (B3, A3, G3, F3), 47 (E3, D3, C3, B2), 48 (A2, G2, F2, E2). Bass clef: 45 (F3, E3, D3, C3), 46 (B2, A2, G2, F2), 47 (E2, D2, C2, B1), 48 (A1, G1, F1, E1).

Allegro

Measures 1-6. Treble clef: 1 (G4, A4, B4, C5), 2 (B4, A4, G4, F4), 3 (E4, D4, C4, B3), 4 (B3, A3, G3, F3), 5 (E3, D3, C3, B2), 6 (A2, G2, F2, E2). Bass clef: 1 (C3, D3, E3, F3), 2 (G3, A3, B3, C4), 3 (D4, E4, F4, G4), 4 (A4, B4, C5, B4), 5 (A4, G4, F4, E4), 6 (D4, C4, B3, A3).

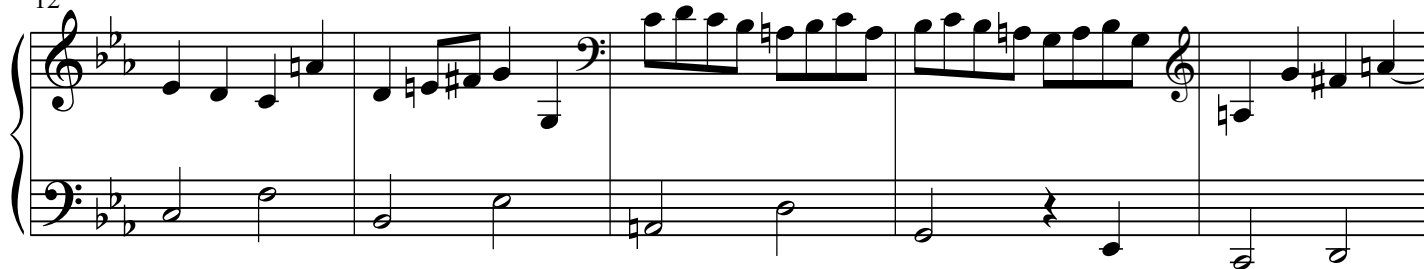
7

Measures 7-12. Treble clef: 7 (F4, E4, D4, C4), 8 (B3, A3, G3, F3), 9 (E3, D3, C3, B2), 10 (A2, G2, F2, E2), 11 (D2, C2, B1, A1), 12 (G1, F1, E1, D1). Bass clef: 7 (F3, E3, D3, C3), 8 (B2, A2, G2, F2), 9 (E2, D2, C2, B1), 10 (A1, G1, F1, E1), 11 (D1, C1, B0, A0), 12 (G0, F0, E0, D0).

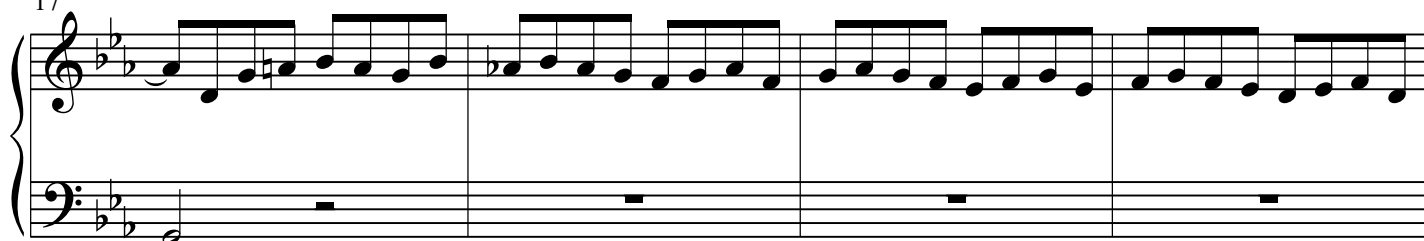
8

Sonata II - PIANO II

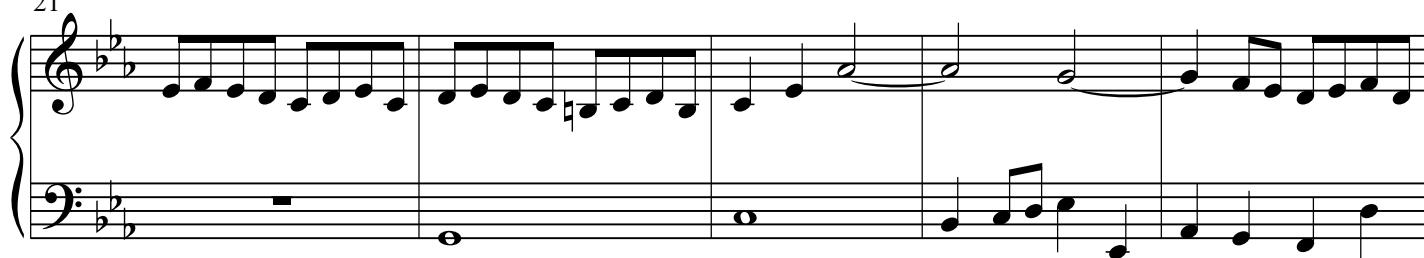
12



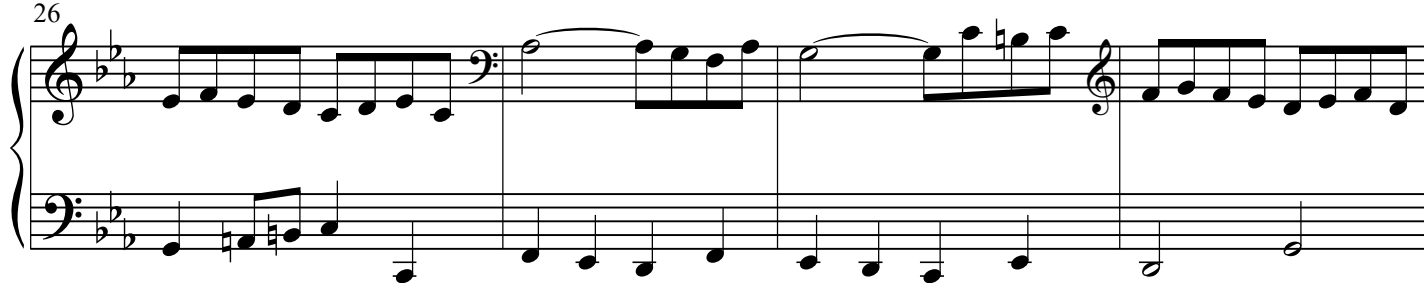
17



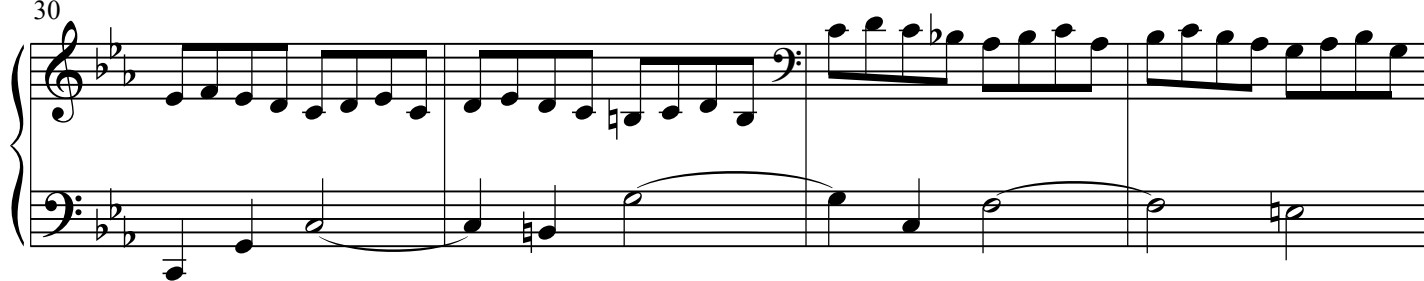
21



26



30



34



Sonata II - PIANO II

9

39

Measures 39-43 of the piano part. Measure 39 features a half note G3 in the right hand and a half note F2 in the left hand. Measure 40 has a half note G3 in the right hand and a half note F2 in the left hand. Measure 41 has a half note G3 in the right hand and a half note F2 in the left hand. Measure 42 has a half note G3 in the right hand and a half note F2 in the left hand. Measure 43 has a half note G3 in the right hand and a half note F2 in the left hand.

44

Measures 44-48 of the piano part. Measure 44 has a half note G3 in the right hand and a half note F2 in the left hand. Measure 45 has a half note G3 in the right hand and a half note F2 in the left hand. Measure 46 has a half note G3 in the right hand and a half note F2 in the left hand. Measure 47 has a half note G3 in the right hand and a half note F2 in the left hand. Measure 48 has a half note G3 in the right hand and a half note F2 in the left hand.

49

Measures 49-52 of the piano part. Measure 49 has a half note G3 in the right hand and a half note F2 in the left hand. Measure 50 has a half note G3 in the right hand and a half note F2 in the left hand. Measure 51 has a half note G3 in the right hand and a half note F2 in the left hand. Measure 52 has a half note G3 in the right hand and a half note F2 in the left hand.

53

Measures 53-57 of the piano part. Measure 53 has a half note G3 in the right hand and a half note F2 in the left hand. Measure 54 has a half note G3 in the right hand and a half note F2 in the left hand. Measure 55 has a half note G3 in the right hand and a half note F2 in the left hand. Measure 56 has a half note G3 in the right hand and a half note F2 in the left hand. Measure 57 has a half note G3 in the right hand and a half note F2 in the left hand.

58

Measures 58-63 of the piano part. Measure 58 has a half note G3 in the right hand and a half note F2 in the left hand. Measure 59 has a half note G3 in the right hand and a half note F2 in the left hand. Measure 60 has a half note G3 in the right hand and a half note F2 in the left hand. Measure 61 has a half note G3 in the right hand and a half note F2 in the left hand. Measure 62 has a half note G3 in the right hand and a half note F2 in the left hand. Measure 63 has a half note G3 in the right hand and a half note F2 in the left hand.

64

Measures 64-68 of the piano part. Measure 64 has a half note G3 in the right hand and a half note F2 in the left hand. Measure 65 has a half note G3 in the right hand and a half note F2 in the left hand. Measure 66 has a half note G3 in the right hand and a half note F2 in the left hand. Measure 67 has a half note G3 in the right hand and a half note F2 in the left hand. Measure 68 has a half note G3 in the right hand and a half note F2 in the left hand.

10

Sonata II - PIANO II

69

Measures 69-72 of the Sonata II - PIANO II. The music is in G-flat major (three flats) and 4/4 time. The right hand features a continuous eighth-note melody, while the left hand provides a steady bass line with eighth and quarter notes.

73

Measures 73-76 of the Sonata II - PIANO II. The right hand continues with eighth-note patterns, and the left hand maintains a consistent bass line.

77

Measures 77-81 of the Sonata II - PIANO II. Measure 77 includes a trill (tr) and a fermata over a half note in the right hand. The left hand continues with a steady bass line.

82

Measures 82-85 of the Sonata II - PIANO II. The right hand features eighth-note runs, and the left hand has a simple bass line with whole notes.

86

Measures 86-90 of the Sonata II - PIANO II. The right hand continues with eighth-note patterns, and the left hand provides a steady bass line.

91

Measures 91-94 of the Sonata II - PIANO II. The right hand features eighth-note runs, and the left hand provides a steady bass line.

96

Measures 96-100 of the Sonata II - PIANO II. The music is in G-flat major (three flats) and 4/4 time. The right hand features a melodic line with eighth and sixteenth notes, while the left hand provides a steady eighth-note accompaniment. A slur covers measures 97-99.

101

Measures 101-105. The right hand continues the melodic development with various note values and rests. The left hand maintains the eighth-note accompaniment. A slur covers measures 102-104.

106

Measures 106-110. The right hand features a more active melodic line with frequent sixteenth notes. The left hand continues the eighth-note accompaniment. A slur covers measures 107-109.

110

Measures 110-113. The right hand continues with a melodic line of eighth and sixteenth notes. The left hand maintains the eighth-note accompaniment. A slur covers measures 111-113.

114

Measures 114-117. The right hand features a melodic line with eighth notes and a half note. The left hand continues the eighth-note accompaniment. A slur covers measures 115-117.

118

Measures 118-122. The right hand begins with a melodic line, followed by a long, wavy line indicating a tremolo or rapid oscillation in measures 119-120. The left hand continues the eighth-note accompaniment. A slur covers measures 119-121.

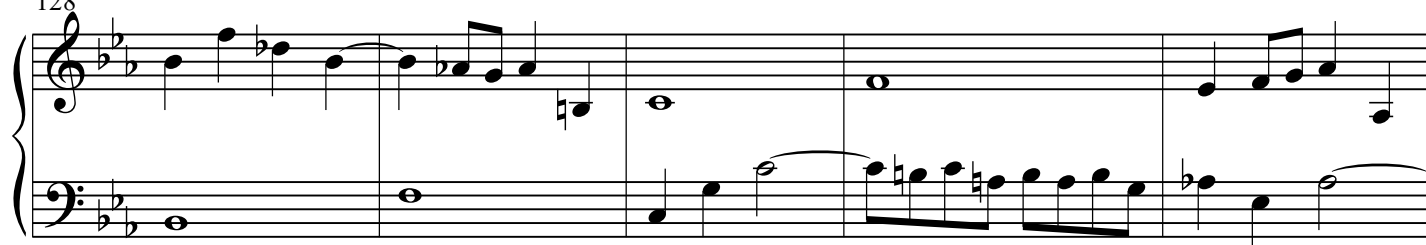
12

Sonata II - PIANO II

123



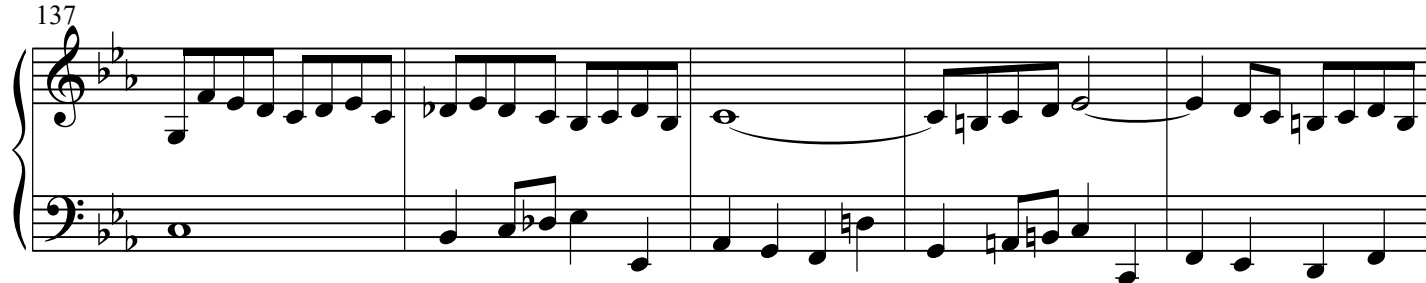
128



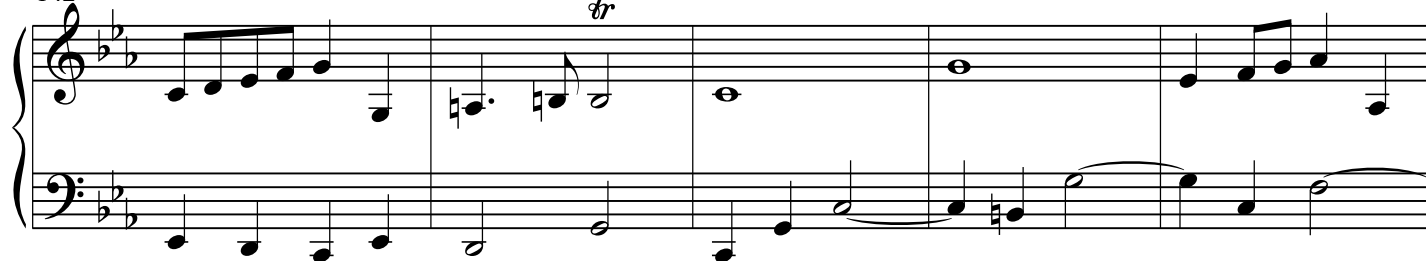
133



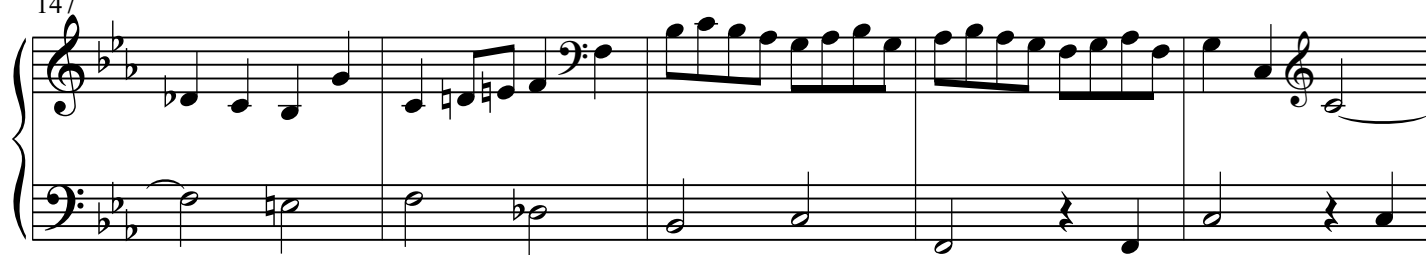
137



142



147



152

Measures 152-155. Treble clef: continuous eighth-note runs. Bass clef: quarter notes and half notes.

156

Measures 156-159. Treble clef: continuous eighth-note runs. Bass clef: quarter notes and half notes.

160

Measures 160-164. Treble clef: half notes with ties. Bass clef: eighth-note runs and quarter notes.

165

Measures 165-168. Treble clef: whole notes with ties. Bass clef: quarter notes and half notes.

169

Measures 169-172. Treble clef: eighth-note runs and half notes. Bass clef: quarter notes and half notes. Ends with a double bar line.