

Cor Anglais

Piano Concerto in G

I. Allegramente

Maurice Ravel

Allegramente $\text{♩} = 116$

15 **1** *mf*

19 *cresc.*

2 **10** *f* *ff*

3 **2**

42 **4** **Meno vivo** **7** *p*

5 **11** **6** **12**

7 **9** **8** **12**

9 *mf* **7**

10 **6** **Tempo primo** $\text{♩} = 120$

113 11

p

118 3

12 8 13 6 *f*

139 3 14 8 15 2 *f*

153 7 *p* *f*

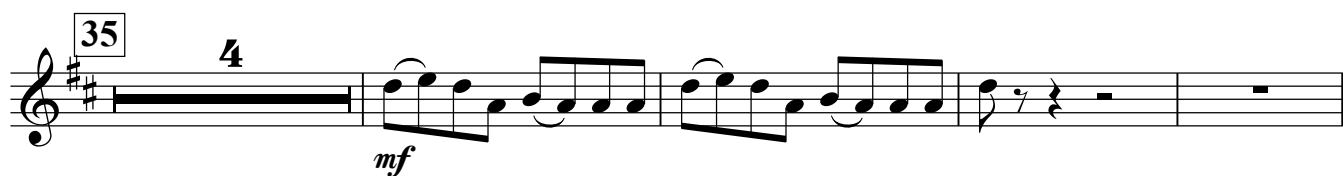
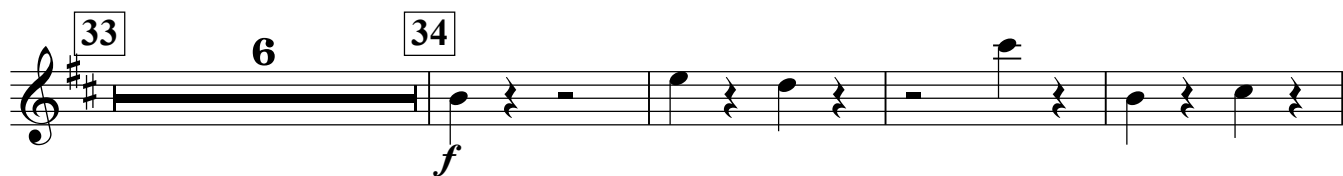
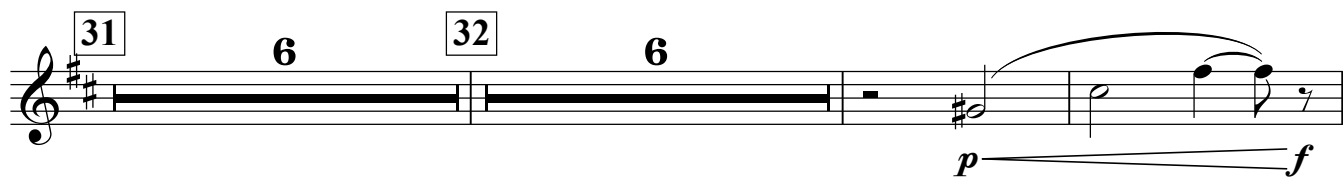
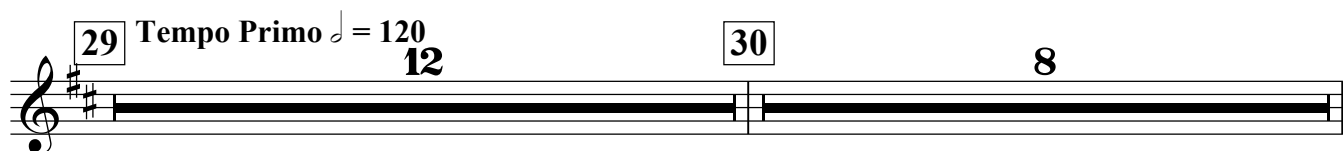
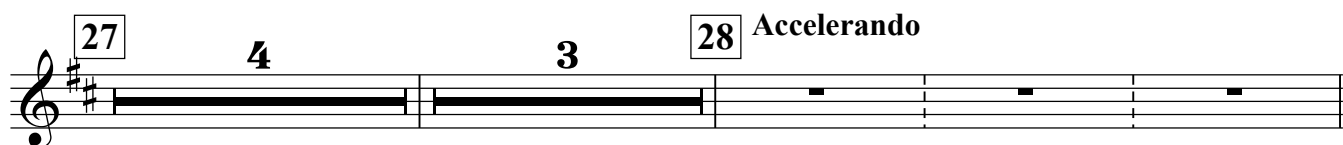
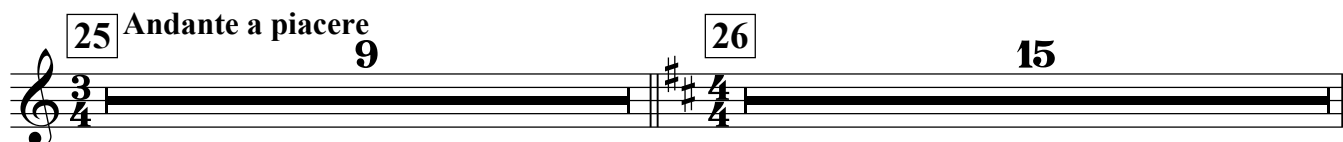
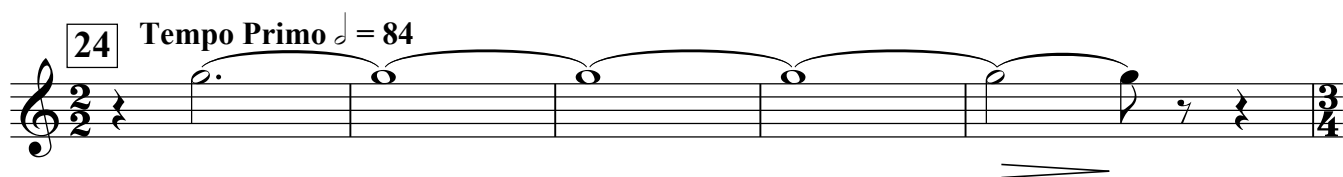
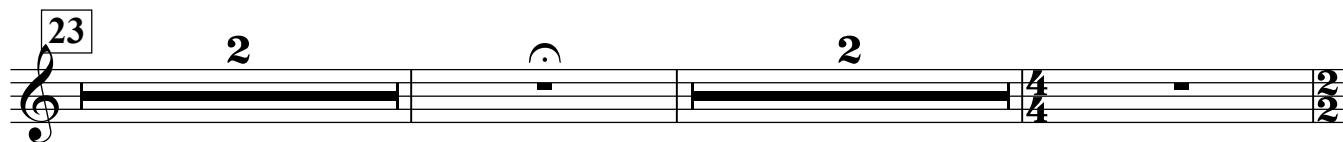
16 9 17 2 18 *f*

176

181 *p*

19 *f* 2

20 *Meno vivo* 8 21 5 22 *Andante* 6



II. Adagio Assai

Adagio Assai ♩ = 76 **33** **1** **10** Pno.

2 *pp*

50 **2** **3** **5**

4 *pp* **5** *f* **3**

6 *p espress.*

79 *p* *cresc.* *f* *p* *f*

7 *p* *cresc.* *f* *p* *f*

8 *f* *p* *f* *tr*

9 *f* *p* *f*

10 **4**

III. Presto

1 Presto ♩ = 160

Musical score for Cor Anglais, III. Presto, measures 1-135. The score is written in treble clef with a key signature of three sharps (F#, C#, G#) and a 2/4 time signature. The tempo is marked Presto with a quarter note equal to 160 beats per minute. The score consists of 135 measures, divided into 13 numbered sections. Section 1 (measures 1-16) is a whole rest. Section 2 (measures 17-28) is a whole rest. Section 3 (measures 29-37) is a whole rest. Section 4 (measures 38-42) is a whole rest. Section 5 (measures 43-51) is a whole rest. Section 6 (measures 52-61) is a whole rest. Section 7 (measures 62-67) is a whole rest. Section 8 (measures 68-72) is a whole rest. Section 9 (measures 73-78) is a whole rest. Section 10 (measures 79-85) is a whole rest. Section 11 (measures 86-92) is a whole rest. Section 12 (measures 93-98) is a whole rest. Section 13 (measures 99-104) is a whole rest. Section 14 (measures 105-118) is a whole rest. Section 15 (measures 119-135) is a whole rest. The score includes various musical notations such as rests, notes, and dynamic markings.

16 1 8

2 12 3 9

4 5 *f*

5 9 6 10 *ff*

7 6 *f p f p f*

8 5 9 6 *f p f p f*

106 10 7 11 *p f p mf*

119 4

12

135 4 13 4

Cor Anglais

144

8

14

15

f

15

12

16

8

17

8

18

8

19

staccato

f

4

20

6

4

224

6

21

f

237

22

9

23

12

24

18

25

7

26

8

ff

Detailed description of the musical score: The score is for a Cor Anglais part, measures 144 to 26. It is written on a single staff in treble clef. The key signature starts with one sharp (F#), changes to two flats (Bb, Eb) at measure 14, and returns to one sharp (F#) at measure 22. The time signature is 2/4. The score includes various musical notations: rests, notes, slurs, and dynamic markings. Measure numbers are indicated in boxes above the staff. The score ends with a double bar line and a fermata.