

Cor Anglais

Piano Concerto in G

I. Allegramente

Maurice Ravel

Allegramente $\text{♩} = 116$

14 *Fl.*

1 *mf* *cresc.* **10** *f* **2** **3** **4** **Meno vivo** **7** **5** **11** **6** **12** **7** **Pno.** **6** **8** **12** **9** **Bsn.** **10** **Tempo primo** ($\text{♩} = 120$) **6**

1-14 **26-35** **40-41** **45-51** **52-62** **63-74** **78-83** **84-95** **100-106** **107-112**

113 11

p

118

p

120–122

3

123–130

8

131–136

6

139–141

3

142–149

8

15

Hn.

152

7

153–159

f

p

f

16

7

162–168

C Tpt.

17

Pno.

172

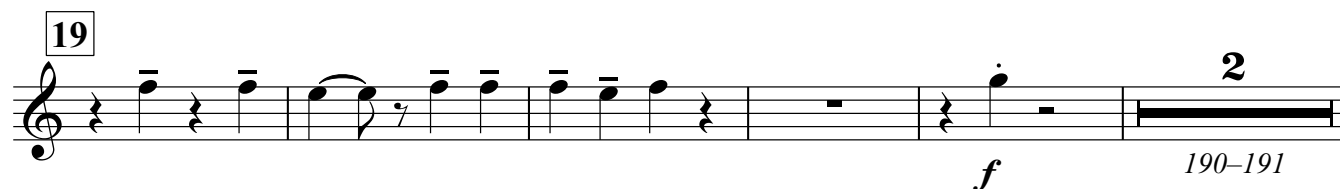
8^{va}

18

f

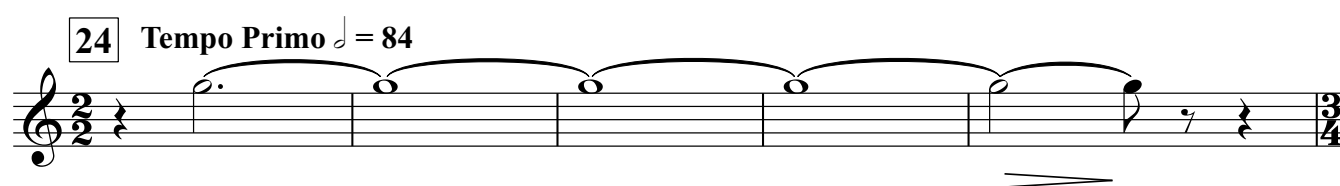
179

p

19  *f* 190–191

20 **Meno vivo** 8 21 5 22 **Andante** 6
192–199 200–204 205–210

23 2 Tri. *tr.* 2 211–212 214–215

24 **Tempo Primo** ♩ = 84 

25 **Andante a piacere** 9 26 15
222–230 231–245

27 Pno. 5 248–252
6 6 6 6 6 6

28 **Accelerando** 29 **Tempo Primo** ♩ = 120 12
256–267

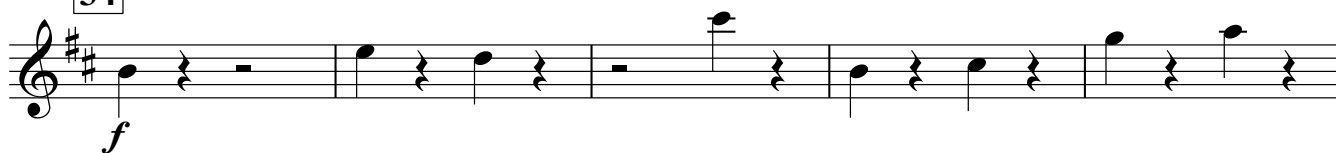
30 8 31 C Tpt. 4
268–275 278–281

32 6 282–287 *p* *f*

33 6 290–295

Cor Anglais

34



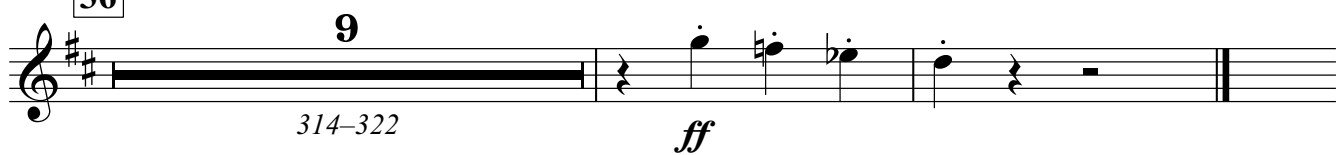
301



35



36



II. Adagio Assai ^{For Anglaises}

5

Adagio Assai ♩ = 76

1 33 10

1-33 34-43

2

pp

50

2 3 5

51-52 53-57

4

pp

12 12

63-65

5

Pno. 8va

66-70

f >

6

79

p espress.

7

p

cresc.

90

8

9

f

p

3

98-100

p f

10

4

104-107

III. Presto

Presto ♩ = 160

1 16 8
1-16 17-24

2 12 8
25-36 37-44

4
53
5 9
57-65

6 6 Hn.
66-71 *ff*

7 6
79-84 *f p f p f*

8 5 9 6
90-94 95-100 *f p f p f*

10 7 11 4
106 *p f p* 108-114 *mf*

119 8 4
124-127

12 4

Vln. I Pizz.

Cor Anglais

7

135 8 4 13 4

136–139 140–143

6 Cym. *f*

144–149

14 15 15 12

155–169 170–181

16 8 17 8

182–189 190–197

18 6 Cl. 5

198–203

19 *f*

213–219

4 20 6 4

210–213 214–219 220–223

224 Pno. 4

226–229

21

f

238

22

9

23

12

247-255

256-267

24

18

25

7

270-287

288-294

26

6

Vlns.

295-300

ff

Detailed description of the musical score: The score is for the Cor Anglais part of a larger work. It begins with measure 21, marked with a forte (f) dynamic. Measures 22, 23, 24, and 25 are measures of rest, with durations of 9, 12, 18, and 7 measures respectively. Measure 26 is also a measure of rest, lasting 6 measures. The score then continues with melodic lines in measures 270-287, 288-294, and 295-300. The dynamic changes to fortissimo (ff) in measure 295. A violin section (Vlns.) is indicated in measure 295. The score ends with a double bar line in measure 300.