

# Johann Sebastian Bach

## *Aria Variata*

BWV 989

*Keyboard Score*

Contrapunctus Press



# Aria Variata

BWV 989

Johann Sebastian Bach

Edited and Engraved by Dr. Dominic Florence

This score is a scholarly edition based upon original sources,  
and is presented without fingering or editorial additions.

This score is published in Canada and is licensed for  
distribution under the Creative Commons Attribution-  
NonCommercial-ShareAlike 4.0 International License.

© 2021 Contrapunctus Press

[www.contrapunctuspress.com](http://www.contrapunctuspress.com)

CP 0105

ISMN 979-0-706103-10-5



9 790706 103105



# Aria Variata

alla Maniera Italiana

Joh. Seb. Bach

BWV 989

## Aria

4

7

10

## Variation 1

Musical score for Variation 1, measures 1 through 12. The piece is in common time (C) and features a treble and bass staff. Measures 1-3 show a melodic line in the treble with grace notes and a bass line with eighth notes. Measures 4-6 include a repeat sign and continue the melodic development. Measures 7-9 show a change in the bass line with a flat. Measures 10-12 conclude the variation with a final cadence and repeat signs.

## Variation 2

Musical score for Variation 2, measures 1 through 3. The piece is in common time (C) and features a treble and bass staff. Measures 1-3 are characterized by triplets in the treble staff, indicated by a '3' below the notes. The bass line provides a steady accompaniment. Measure 3 ends with a repeat sign.

5

7

9

11

### Variation 3

3

5 2. (*tr*)

7

9 *tr* (*w*) (*w*) *tr*

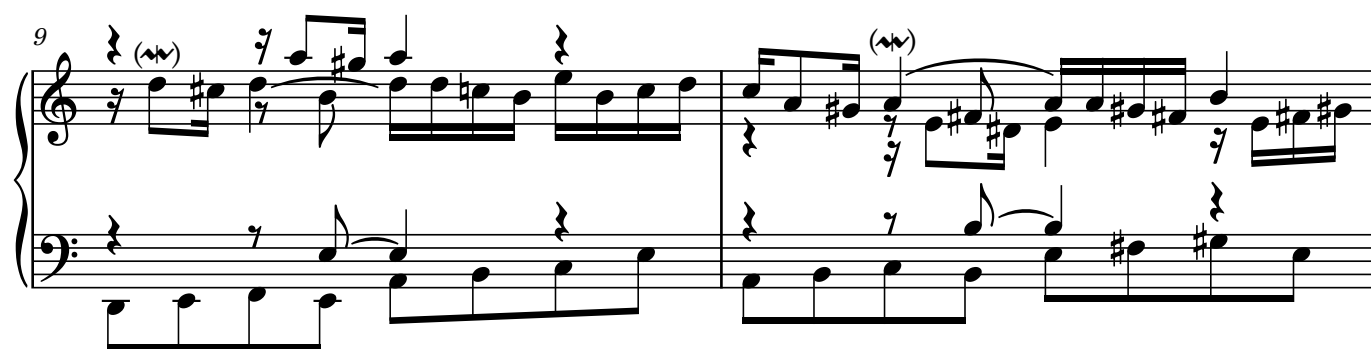
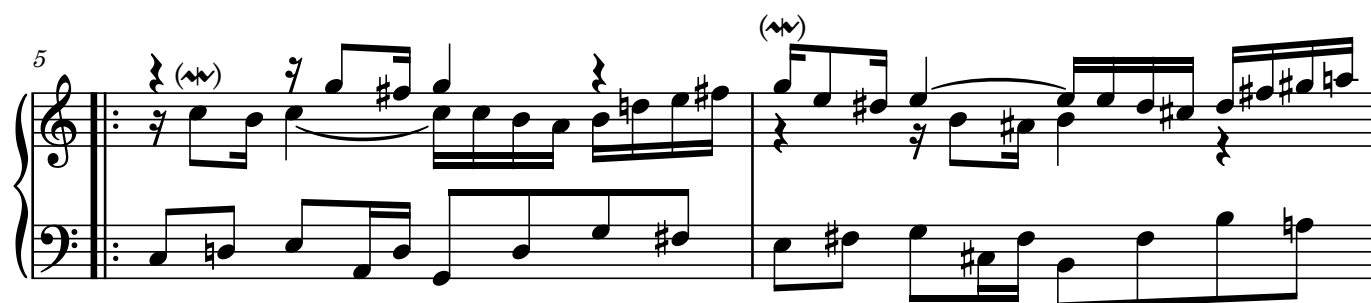
11

13 1. (*tr*) 2. (*tr*)

## Variation 4

(*w*)





## Variation 5

Measures 1-2 of Variation 5. The music is in C major, 2/4 time. The treble clef staff features a melody with eighth and sixteenth notes, including a trill on the second measure. The bass clef staff provides a harmonic accompaniment with eighth and sixteenth notes.

Measures 3-4 of Variation 5. Measure 3 continues the melodic and harmonic patterns. Measure 4 begins a first ending, marked with a '1.' and a repeat sign, leading to a double bar line.

Measures 5-6 of Variation 5. Measure 5 begins a second ending, marked with a '2.' and a repeat sign. Measure 6 concludes the second ending with a final cadence, marked with a double bar line.

Measures 7-8 of Variation 5. Measure 7 continues the melodic and harmonic patterns. Measure 8 features a trill on the treble staff and a more active bass line.

Measures 9-10 of Variation 5. Measure 9 continues the melodic and harmonic patterns. Measure 10 concludes the variation with a final cadence, marked with a double bar line.

11

Measures 11 and 12 of a musical score. Measure 11 features a treble clef with a key signature of one flat and a common time signature. The melody consists of eighth and sixteenth notes, with a wavy line above the first measure. The bass clef part consists of eighth notes. Measure 12 continues the melody in the treble and the bass line.

[12]

Measures 13 and 14 of a musical score. Measure 13 features a treble clef with a key signature of one flat and a common time signature. The melody consists of eighth and sixteenth notes, with a wavy line above the first measure. The bass clef part consists of eighth notes. Measure 14 continues the melody in the treble and the bass line, ending with a double bar line and repeat dots.

### Variation 6

Measures 15, 16, and 17 of Variation 6. Measure 15 features a treble clef with a key signature of one flat and a common time signature. The melody consists of eighth and sixteenth notes, with wavy lines above the first three measures. The bass clef part consists of eighth notes. Measure 16 continues the melody in the treble and the bass line. Measure 17 continues the melody in the treble and the bass line.

4

Measures 18, 19, and 20 of Variation 6. Measure 18 features a treble clef with a key signature of one flat and a common time signature. The melody consists of eighth and sixteenth notes, with wavy lines above the first three measures. The bass clef part consists of eighth notes. Measure 19 continues the melody in the treble and the bass line. Measure 20 continues the melody in the treble and the bass line.

7

Measures 21 and 22 of Variation 6. Measure 21 features a treble clef with a key signature of one flat and a common time signature. The melody consists of eighth and sixteenth notes, with a wavy line above the first measure. The bass clef part consists of eighth notes. Measure 22 continues the melody in the treble and the bass line.

Measures 9 and 10 of a musical score. Measure 9 features a treble staff with a melodic line starting on G4, marked with a wavy line, and a bass staff with a supporting line. Measure 10 continues the melodic development in the treble staff, also marked with a wavy line, while the bass staff provides harmonic support.

Measures 11 and 12 of a musical score. Measure 11 shows a treble staff with a melodic line marked with a wavy line and a bass staff with a supporting line. Measure 12 continues the melodic development in the treble staff, marked with a wavy line, while the bass staff provides harmonic support.

### Variation 7

Measures 13 and 14 of Variation 7. Measure 13 features a treble staff with a melodic line marked with a wavy line and a bass staff with a supporting line. Measure 14 continues the melodic development in the treble staff, marked with a wavy line, while the bass staff provides harmonic support.

Measures 15 and 16 of Variation 7. Measure 15 features a treble staff with a melodic line marked with a wavy line and a bass staff with a supporting line. Measure 16 continues the melodic development in the treble staff, marked with a wavy line, while the bass staff provides harmonic support.

Measures 17 and 18 of Variation 7. Measure 17 features a treble staff with a melodic line marked with a wavy line and a bass staff with a supporting line. Measure 18 continues the melodic development in the treble staff, marked with a wavy line, while the bass staff provides harmonic support.

7

Measures 7 and 8 of a musical score. Measure 7 features a treble staff with eighth-note runs and a bass staff with eighth-note patterns. Measure 8 continues the treble staff with a dotted half note and the bass staff with a half note and eighth notes.

9

Measures 9 and 10 of a musical score. Measure 9 shows a treble staff with eighth-note runs and a bass staff with quarter notes. Measure 10 continues the treble staff with eighth notes and the bass staff with eighth notes.

11

Measures 11 and 12 of a musical score. Measure 11 features a treble staff with eighth-note runs and a bass staff with quarter notes. Measure 12 continues the treble staff with eighth notes and the bass staff with quarter notes, ending with a repeat sign.

### Variation 8

Measures 1 and 2 of Variation 8. Measure 1 features a treble staff with eighth-note runs and a bass staff with quarter notes. Measure 2 continues the treble staff with eighth notes and the bass staff with quarter notes.

3

Measures 3 and 4 of Variation 8. Measure 3 features a treble staff with eighth-note runs and a bass staff with quarter notes. Measure 4 continues the treble staff with eighth notes and the bass staff with quarter notes, ending with a repeat sign.

5 2.

Musical notation for measures 5 and 6. Measure 5 has a first ending bracket. Measure 6 has a second ending bracket. The key signature has one sharp (F#).

7

Musical notation for measures 7 and 8. The key signature has one sharp (F#).

9

Musical notation for measures 9 and 10. The key signature has one sharp (F#).

11

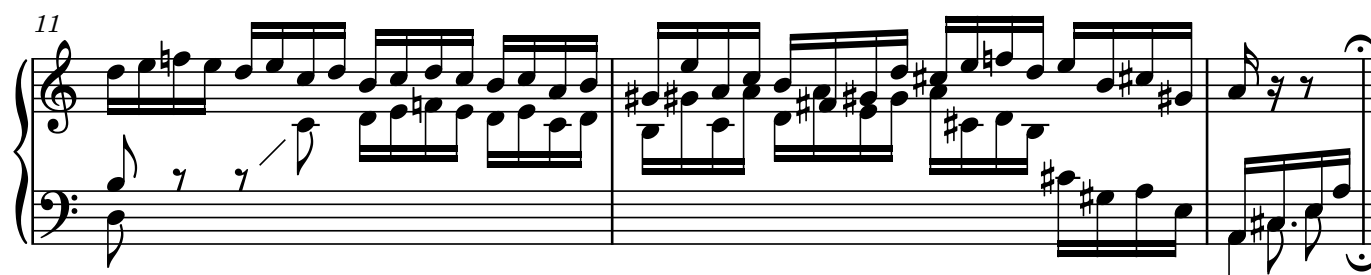
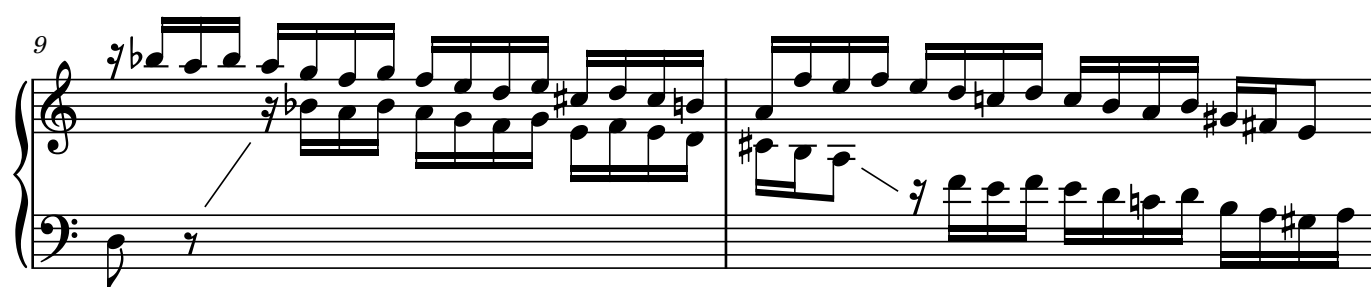
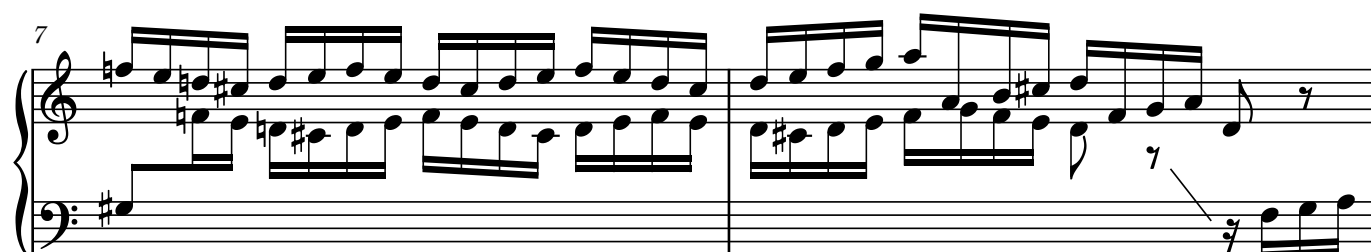
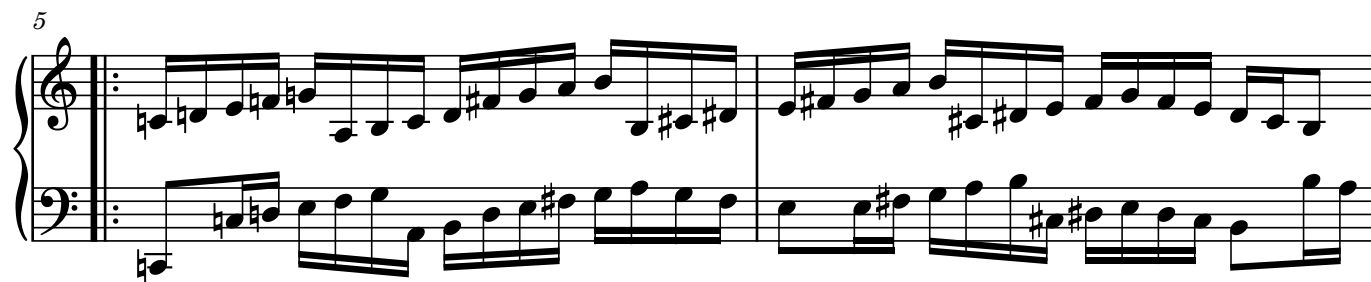
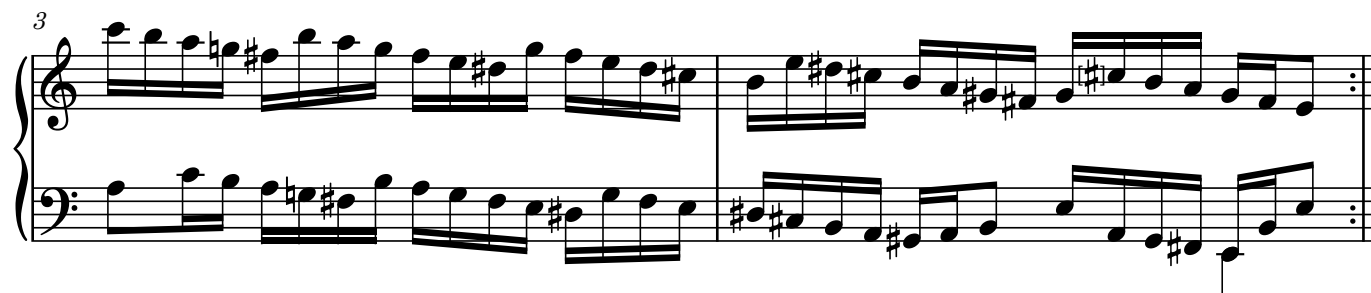
Musical notation for measures 11 and 12. The key signature has one sharp (F#).

13 1. 2.

Musical notation for measures 13 and 14. Measure 13 has a first ending bracket. Measure 14 has a second ending bracket. The key signature has one sharp (F#).

### Variation 9

Musical notation for Variation 9, measures 15 and 16. The key signature has one sharp (F#).



## Variation 10

Measures 1-3 of Variation 10. The music is in C major, 4/4 time. Measure 1 features a treble staff with a half note G4 (marked with a wavy line), a quarter note A4, a quarter note B4, and a half note C5. The bass staff has a half note C3, a quarter note D3, a quarter note E3, and a half note F3. Measure 2 has a treble staff with a half note D4, a quarter note E4, a quarter note F4, and a half note G4. The bass staff has a half note G2, a quarter note A2, a quarter note B2, and a half note C3. Measure 3 has a treble staff with a half note A4, a quarter note B4, a quarter note C5, and a half note B4. The bass staff has a half note D3, a quarter note E3, a quarter note F3, and a half note G3.

Measures 4-6 of Variation 10. Measure 4 has a treble staff with a half note G4 (marked with a wavy line), a quarter note A4, a quarter note B4, and a half note C5. The bass staff has a half note C3, a quarter note D3, a quarter note E3, and a half note F3. Measure 5 has a treble staff with a half note D4, a quarter note E4, a quarter note F4, and a half note G4. The bass staff has a half note G2, a quarter note A2, a quarter note B2, and a half note C3. Measure 6 has a treble staff with a half note A4, a quarter note B4, a quarter note C5, and a half note B4. The bass staff has a half note D3, a quarter note E3, a quarter note F3, and a half note G3.

Measures 7-9 of Variation 10. Measure 7 has a treble staff with a half note G4 (marked with a wavy line), a quarter note A4, a quarter note B4, and a half note C5. The bass staff has a half note C3, a quarter note D3, a quarter note E3, and a half note F3. Measure 8 has a treble staff with a half note D4, a quarter note E4, a quarter note F4, and a half note G4. The bass staff has a half note G2, a quarter note A2, a quarter note B2, and a half note C3. Measure 9 has a treble staff with a half note A4, a quarter note B4, a quarter note C5, and a half note B4. The bass staff has a half note D3, a quarter note E3, a quarter note F3, and a half note G3.

Measures 10-12 of Variation 10. Measure 10 has a treble staff with a half note G4 (marked with a wavy line), a quarter note A4, a quarter note B4, and a half note C5. The bass staff has a half note C3, a quarter note D3, a quarter note E3, and a half note F3. Measure 11 has a treble staff with a half note D4, a quarter note E4, a quarter note F4, and a half note G4. The bass staff has a half note G2, a quarter note A2, a quarter note B2, and a half note C3. Measure 12 has a treble staff with a half note A4, a quarter note B4, a quarter note C5, and a half note B4. The bass staff has a half note D3, a quarter note E3, a quarter note F3, and a half note G3.





*Aria Variata*  
Johann Sebastian Bach

Editing and Engraving  
Dr. Dominic Florence

© 2021 Contrapunctus Press  
[www.contrapunctuspress.com](http://www.contrapunctuspress.com)

ISMN 979-0-706103-10-5

