

# Allein zu dir, Herr Jesu Christ, BWV 33

## 3. Aria 'Wie furchtsam wankten meine Schritte'

Johann Sebastian Bach

Transcription: Nuno R. Rodrigues

*p*

*Ped.* \* *Ped.* \* *Ped.* \* *Ped.* \* *Ped. simile*

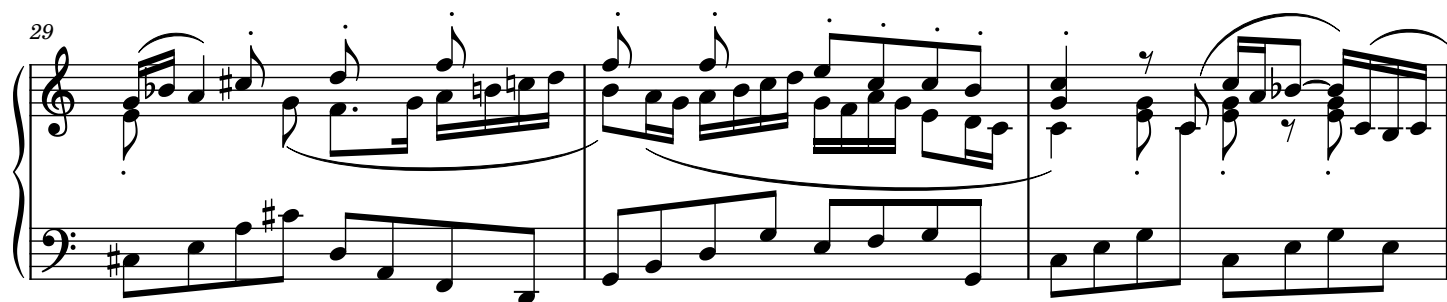
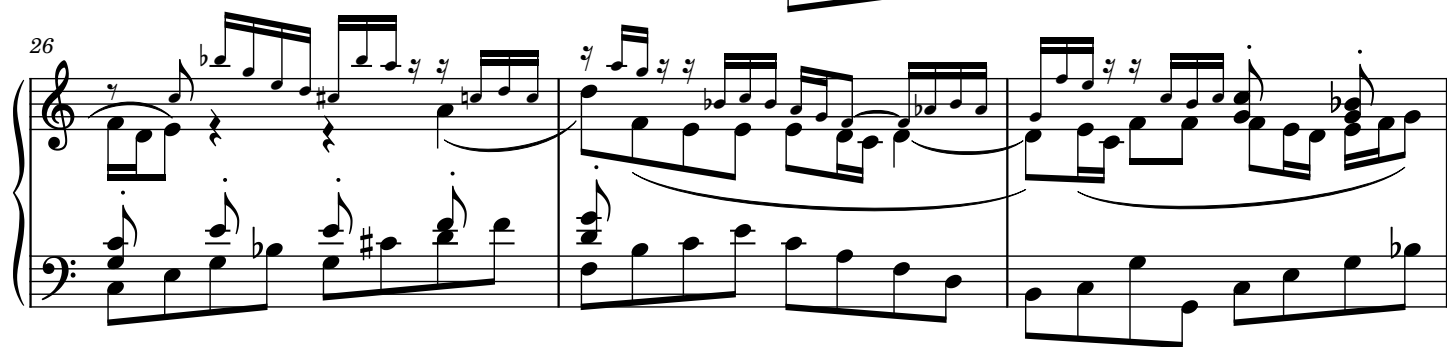
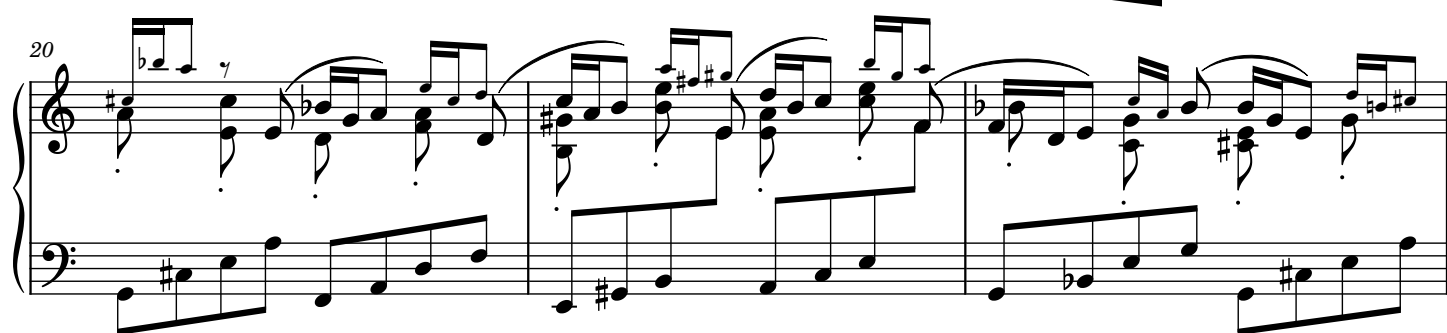
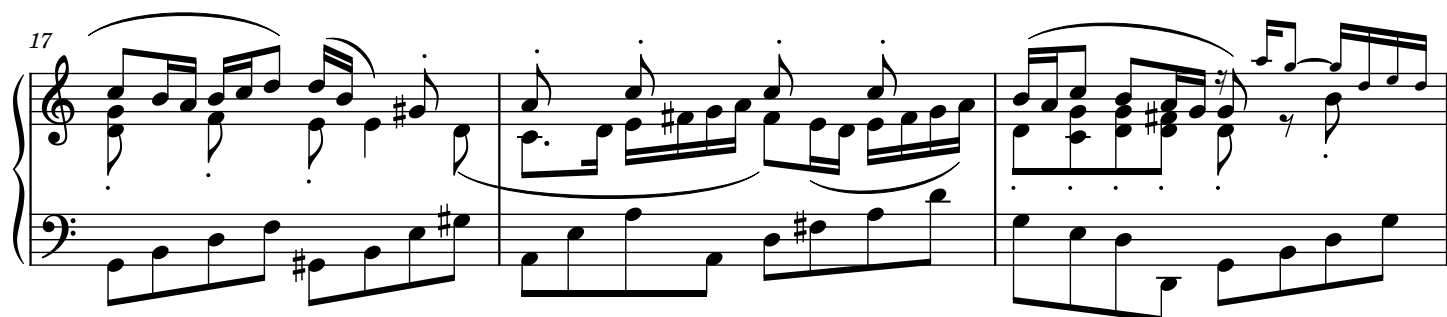
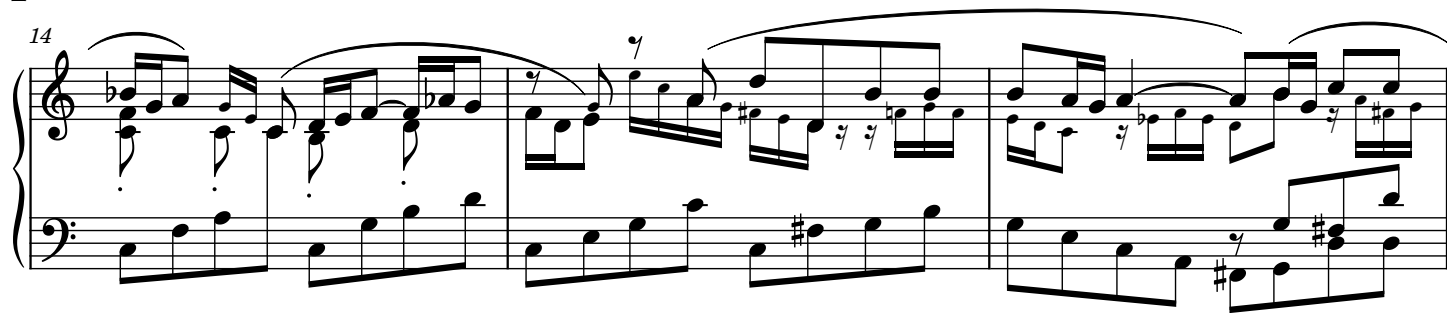
3

6

8

*il canto sempre mp*

11



32

32 33 34

35

35 36 37

To Coda

38

38 39 40

41

41 42 43

44

44 45 46

$\frac{1}{5}$

47

47 48 49

50

Measures 50-52 of a piano piece. The right hand features a complex, flowing melody with many beamed sixteenth and thirty-second notes, often with grace notes. The left hand provides a steady accompaniment with eighth and sixteenth notes. The key signature has one sharp (F#).

53

Measures 53-55. The right hand continues with intricate melodic patterns, including triplets and rapid sixteenth-note passages. The left hand maintains a consistent rhythmic accompaniment.

56

Measures 56-58. The right hand's melody becomes more rhythmic with frequent eighth-note patterns. The left hand's accompaniment remains steady.

59

Measures 59-61. The right hand features a melodic line with some rests and beamed notes. The left hand continues with its accompaniment. A double bar line appears at the end of measure 61.

62

Measures 62-64. The right hand has a more active melodic line with many beamed notes. The left hand's accompaniment is consistent.

65

D.C. al Coda

Measures 65-67 and the Coda. Measures 65-67 continue the piece's texture. The Coda, marked with a Coda symbol (a circle with a cross), consists of a final chord in the right hand and a whole note in the left hand.