

## SONATE

## Pastorale

Claude DEBUSSY

(Arr. H. KAMIOKA)

Lento, dolce rubato

2

*p* doux et penetrant

6

*piu p*

*p*

*p* soutenu

12

*p*

15

*pp*

*p*

*pp*

18

1

*p*

*mf*

*dim.*

*p*

23

*mf*

*p*

26

2

*f* nettement rythme

*sf*

*f*

*f*

29

*p*

*pp* subito

33

3

37

[illegible]

# Interlude

*p dolce*

7 *p dolce semplice*

11 3 7 *p*

17 *p marcato leggermente*

20 *dim.* *p*

25 *p* *p dolce sost.* *cresc.*

29 8 *mf* *f*

33 *f* *diminuendo* *p*

36 *f*

41 *pp sensibile* *mf*

44 *dim.* 9 *p*

47 *molto sensibile* *p* *sospirare*

51 10 *pp*

56 *mf*

61 *sforzato* *f* *p*

64 11 *piu p* *p*

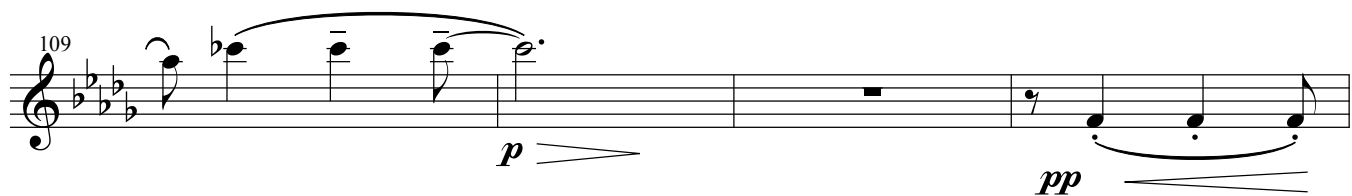
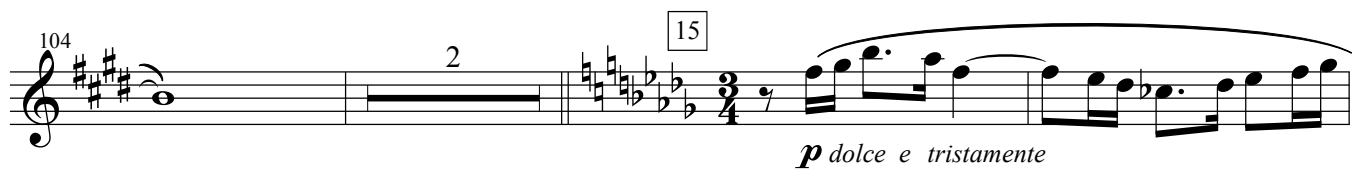
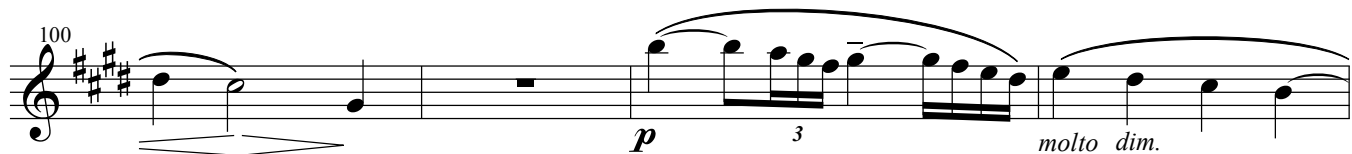
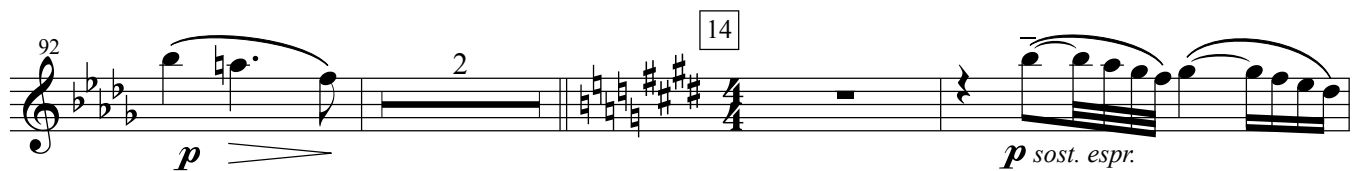
68 *p*

71 *p* *p* *3* *p*

73 *cresc.* *mf*

75 *p dolce* *cresc.* *flutter* *p*

12



# Final

musical score for the "Final" section, measures 1-26. The score is written in 4/4 time and features a variety of dynamic markings and articulations.

Measures 1-5: *f*, *sf*, *f*, *sf*, *f*. Articulations include accents (^) and slurs.

Measure 6: *molto marc.* (marked above the staff). Triplet markings (3) are present.

Measures 7-8: Triplet markings (3) and slurs.

Measures 9-12: *f* (marked below the staff). Triplet markings (3) and slurs.

Measures 13-15: *p* (marked below the staff). Triplet markings (3) and slurs.

Measure 16: *p* (marked below the staff). Triplet markings (3) and slurs.

Measures 17-18: *sf* (marked below the staff). Triplet markings (3) and slurs.

Measures 19-21: *sf p* (marked below the staff). Triplet markings (3) and slurs.

Measures 22-23: *sf p* (marked below the staff). Triplet markings (3) and slurs.

Measures 24-25: *sf p* (marked below the staff). Triplet markings (3) and slurs.

Measure 26: *mf espr.* (marked below the staff). Triplet markings (3) and slurs.

28 *f* 3

30 *p* *f* *dim.*

32 *p* 17

35 *sf*

38 *sf*

41 *f* *f*

43 *piu f* 18 *p* 3 3 3 *piu f*

46 *p* 3 3 3 *piu f* *dim.*

49 *p*

54 *sempre p*

19

58 *legg.*

61 *cresc. poco a poco*

64 *molto cresc.*

68 *p p p p piu p*

73 *dim. e molto*

20

76 *pp*

79 *cresc. ed accel. poco a poco*  
*p 3 espress. p sost.*

83

21

86 *f f 3*

88 *p sub. e cresc. molto* *p sub. e cresc. molto*



