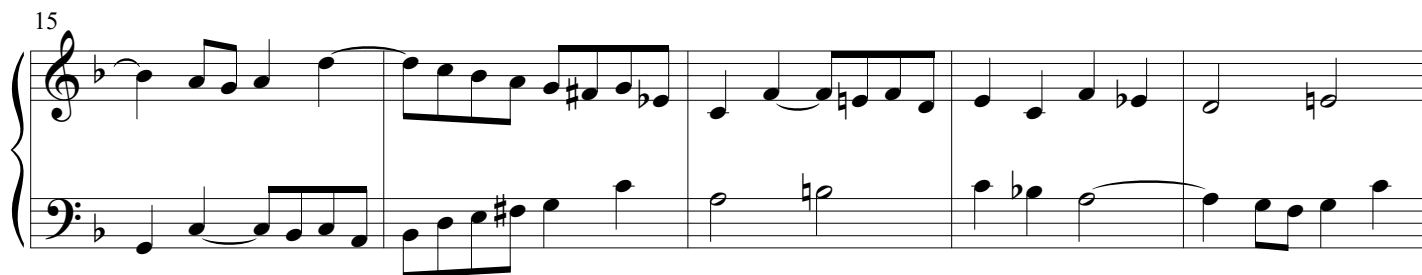


Fuga XIII

BWV 882

J. Sebastian Bach
Arr. Peter H. Besseling



2

Fuga XIII - Piano II

25

Measures 25-28 of the musical score. The key signature is one flat (B-flat). The treble clef staff contains a melody with a flat (B-flat) above the first measure. The bass clef staff contains a complex, fast-moving accompaniment with many accidentals.

29

Measures 29-32 of the musical score. The treble clef staff continues the melody with a trill (tr) in measure 32. The bass clef staff continues the complex accompaniment.

33

Measures 33-37 of the musical score. The treble clef staff features a trill (tr) in measure 34. The bass clef staff continues the complex accompaniment.

38

Measures 38-41 of the musical score. The treble clef staff continues the melody. The bass clef staff continues the complex accompaniment.

42

Measures 42-45 of the musical score. The treble clef staff continues the melody. The bass clef staff continues the complex accompaniment.

46

Measures 46-49 of the musical score. The treble clef staff continues the melody. The bass clef staff continues the complex accompaniment.

51

tr

55

59

63

68

72

76

Measures 76-79 of the musical score. The treble clef staff contains a melody with a trill on the first measure, followed by quarter and eighth notes. The bass clef staff features a continuous eighth-note accompaniment. The key signature has one flat (B-flat).

80

Measures 80-83 of the musical score. The treble clef staff continues the melody with quarter and eighth notes, ending with a half note. The bass clef staff continues the eighth-note accompaniment. The key signature has one flat (B-flat).