

Praeludium et Fuga XXI

BWV 890

J. SEBASTIAN BACH

PETER H. BESSELING

4

7

11

15

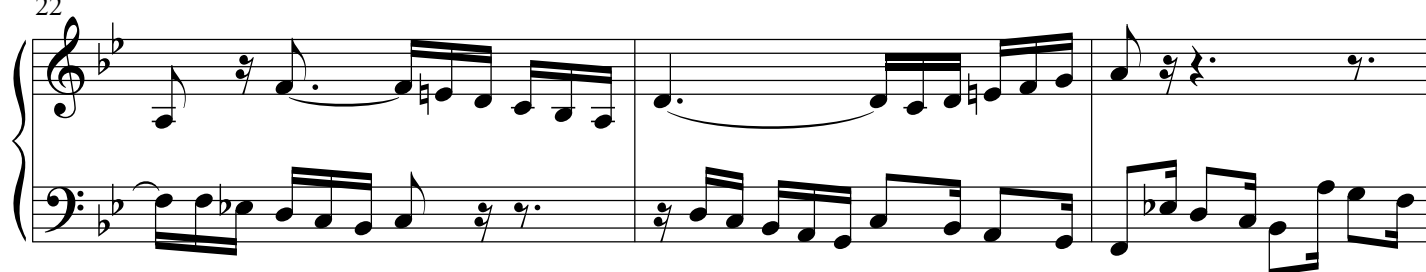
2

Praeludium et Fuga XXI - PIANO II

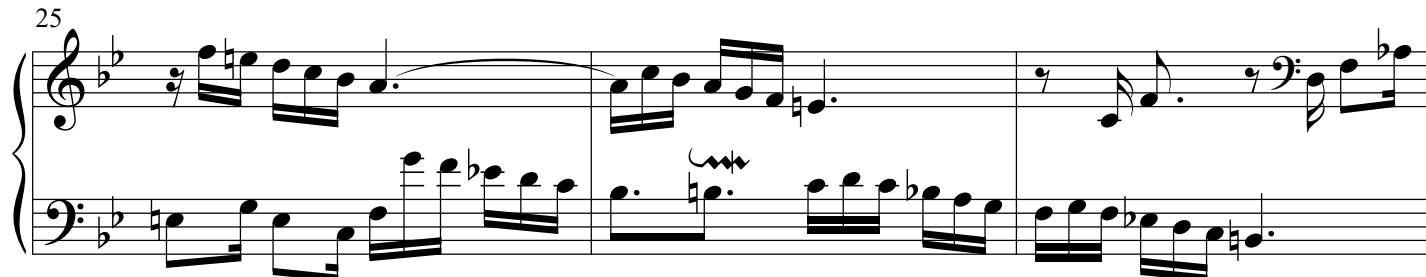
19



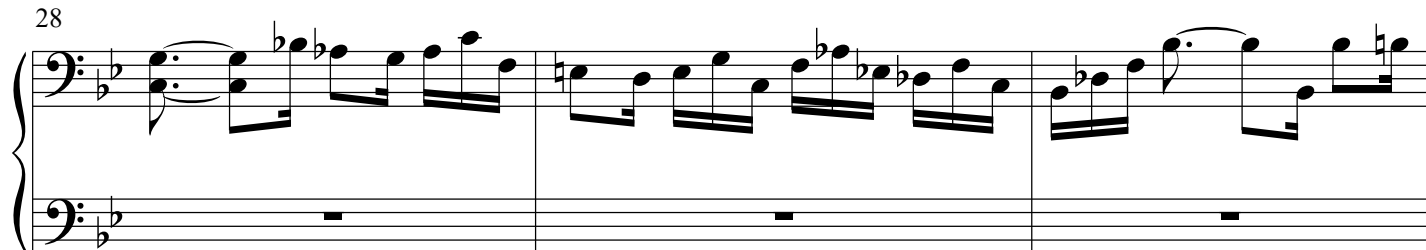
22



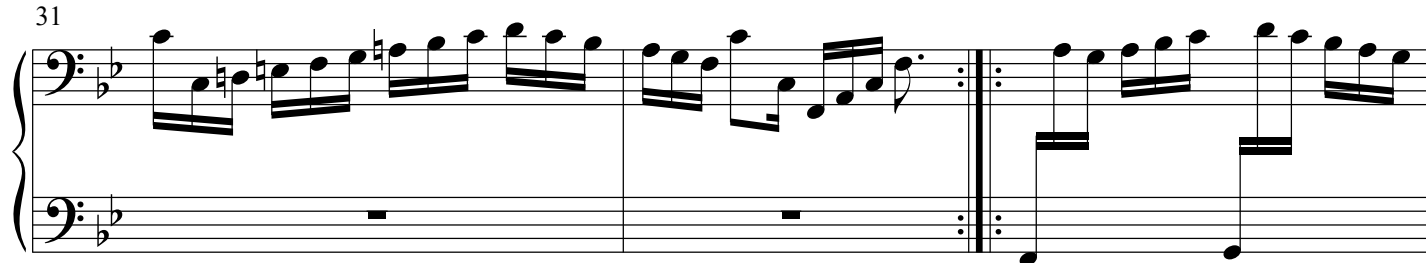
25



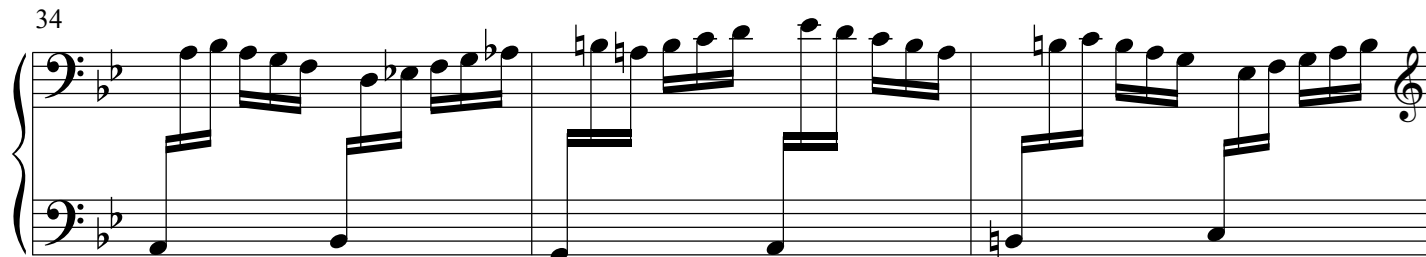
28



31



34



37

Measures 37-40. Treble clef: 37 (quarter, dotted quarter, eighth), 38 (quarter, dotted quarter, eighth), 39 (beamed eighth, sixteenth, eighth, sixteenth), 40 (beamed eighth, sixteenth, eighth, sixteenth). Bass clef: 37 (quarter, dotted quarter), 38 (quarter, dotted quarter), 39 (quarter, dotted quarter), 40 (quarter, dotted quarter).

41

Measures 41-44. Treble clef: 41 (beamed eighth, sixteenth, eighth, sixteenth), 42 (quarter, dotted quarter, eighth), 43 (quarter, dotted quarter, eighth), 44 (quarter, dotted quarter, eighth). Bass clef: 41 (quarter, dotted quarter), 42 (quarter, dotted quarter), 43 (quarter, dotted quarter), 44 (quarter, dotted quarter).

45

Measures 45-47. Treble clef: 45 (quarter, dotted quarter, eighth), 46 (quarter, dotted quarter, eighth), 47 (quarter, dotted quarter, eighth). Bass clef: 45 (quarter, dotted quarter), 46 (quarter, dotted quarter), 47 (quarter, dotted quarter).

48

Measures 48-50. Treble clef: 48 (beamed eighth, sixteenth, eighth, sixteenth), 49 (quarter, dotted quarter, eighth), 50 (quarter, dotted quarter, eighth). Bass clef: 48 (quarter, dotted quarter), 49 (quarter, dotted quarter), 50 (quarter, dotted quarter).

51

Measures 51-53. Treble clef: 51 (beamed eighth, sixteenth, eighth, sixteenth), 52 (quarter, dotted quarter, eighth), 53 (quarter, dotted quarter, eighth). Bass clef: 51 (quarter, dotted quarter), 52 (quarter, dotted quarter), 53 (quarter, dotted quarter).

54

Measures 54-56. Treble clef: 54 (beamed eighth, sixteenth, eighth, sixteenth), 55 (quarter, dotted quarter, eighth), 56 (quarter, dotted quarter, eighth). Bass clef: 54 (quarter, dotted quarter), 55 (quarter, dotted quarter), 56 (quarter, dotted quarter).

System 1 (Measures 57-59): The right hand begins with a whole rest in measure 57, followed by a half note G4 in measure 58, and a half note A4 in measure 59. The left hand plays a continuous eighth-note pattern in B-flat major, starting on F4 in measure 57 and ascending to G5 in measure 59.

System 2 (Measures 60-61): The right hand continues with a half note Bb4 in measure 60 and a half note C5 in measure 61. The left hand continues the eighth-note pattern, ascending to A5 in measure 61.

System 3 (Measures 62-64): The right hand plays a half note D5 in measure 62, a half note E5 in measure 63, and a half note F5 in measure 64. The left hand continues the eighth-note pattern, ascending to F5 in measure 64.

System 4 (Measures 65-67): The right hand has a whole rest in measure 65, followed by a half note G5 in measure 66, and a half note A5 in measure 67. The left hand continues the eighth-note pattern, ascending to A5 in measure 67.

System 5 (Measures 68-70): The right hand plays a half note Bb5 in measure 68, a half note C6 in measure 69, and a half note D6 in measure 70. The left hand continues the eighth-note pattern, ascending to Bb5 in measure 70.

System 6 (Measures 71-73): The right hand plays a half note E6 in measure 71, a half note F6 in measure 72, and a half note G6 in measure 73. The left hand continues the eighth-note pattern, ascending to C6 in measure 73.

74

77

79

82

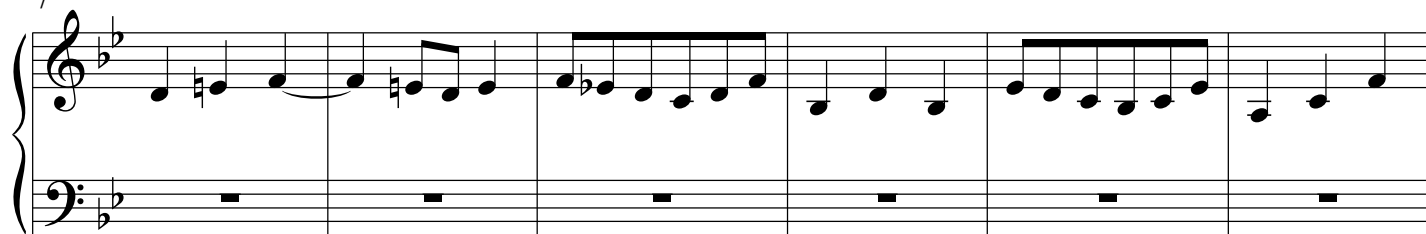
85

Fuga

6

Praeludium et Fuga XXI - PIANO II

7



13



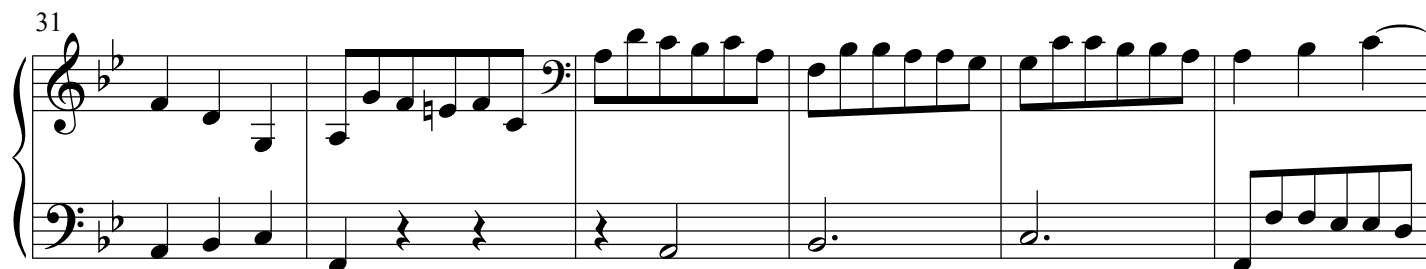
19



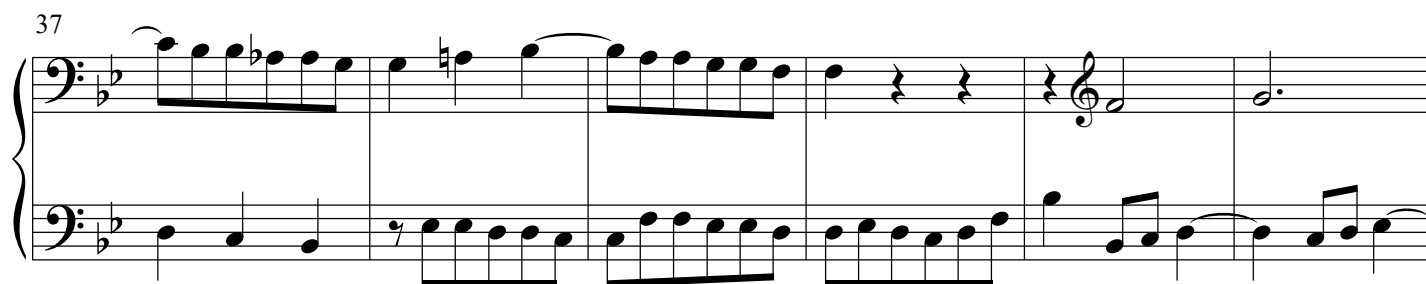
25



31



37



Praeludium et Fuga XXI - PIANO II

7

43

49

55

61

67

72

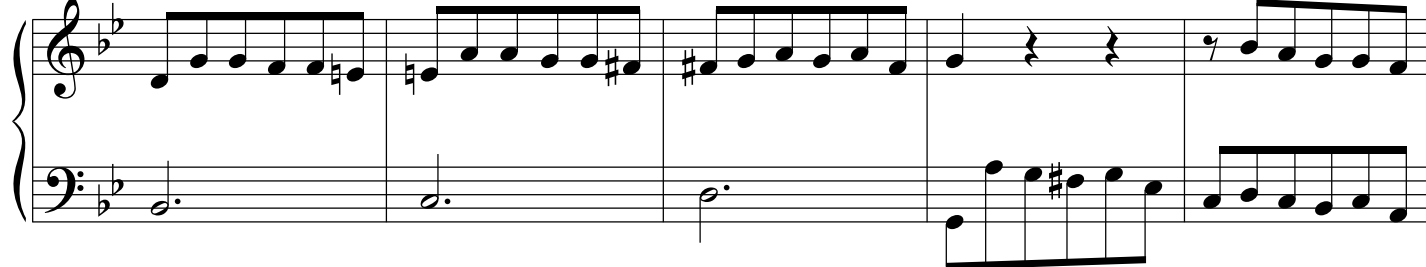
8

Praeludium et Fuga XXI - PIANO II

78



83



88

