

**Praeludium et Fuga IV**

BWV 873

J. SEBASTIAN BACH

PETER H. BESSELING

4

7

10

13

*tr* *tr*



# Praeludium et Fuga IV - PIANO I

3

34

37

40

43

46

49

52

Measures 52-53 of the Praeludium. The key signature is two sharps (F# and C#). Measure 52 features a treble staff with a dotted quarter note followed by an eighth-note triplet, and a bass staff with a quarter-note triplet. Measure 53 continues the melodic lines with various note values and rests.

54

Measures 54-55 of the Praeludium. Measure 54 includes trills (tr) in both staves. Measure 55 continues the melodic and harmonic development.

56

Measures 56-58 of the Praeludium. Measure 56 starts with a whole rest in the treble staff. Measures 57 and 58 show further melodic and harmonic progression.

59

Measures 59-62 of the Praeludium. Measures 59 and 60 feature trills (tr) in the bass staff. The section concludes in measure 62 with a final chord.

## Fuga

Measures 1-3 of the Fuga section. The time signature changes to 12/16. The key signature remains two sharps. Measure 1 has a whole rest in the treble staff. Measures 2 and 3 show the beginning of the fugue with sixteenth-note patterns.

4

Measures 4-7 of the Fuga section. Measures 4 and 5 continue the sixteenth-note patterns in both staves. Measures 6 and 7 show a change in the bass staff's rhythmic pattern.

# Praeludium et Fuga IV - PIANO I

5

8

Measures 8-10. Treble clef: eighth-note runs, quarter rest, eighth-note runs. Bass clef: half-note chord, eighth-note runs, half-note chord.

11

Measures 11-13. Treble clef: quarter notes, eighth-note runs. Bass clef: eighth-note runs, quarter notes.

14

Measures 14-16. Treble clef: eighth-note runs, quarter notes. Bass clef: quarter notes, eighth-note runs.

17

Measures 17-19. Treble clef: eighth-note runs, quarter notes. Bass clef: eighth-note runs, quarter notes.

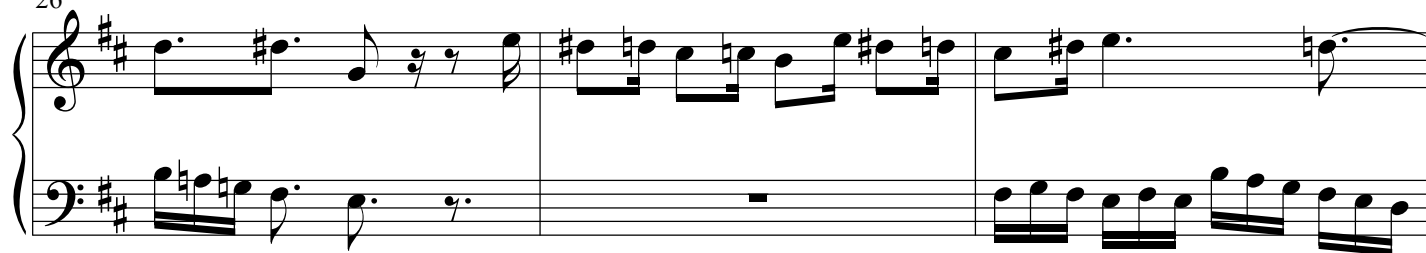
20

Measures 20-22. Treble clef: quarter notes, eighth-note runs. Bass clef: eighth-note runs, quarter notes.

23

Measures 23-25. Treble clef: eighth-note runs, quarter notes. Bass clef: eighth-note runs, quarter notes.

26



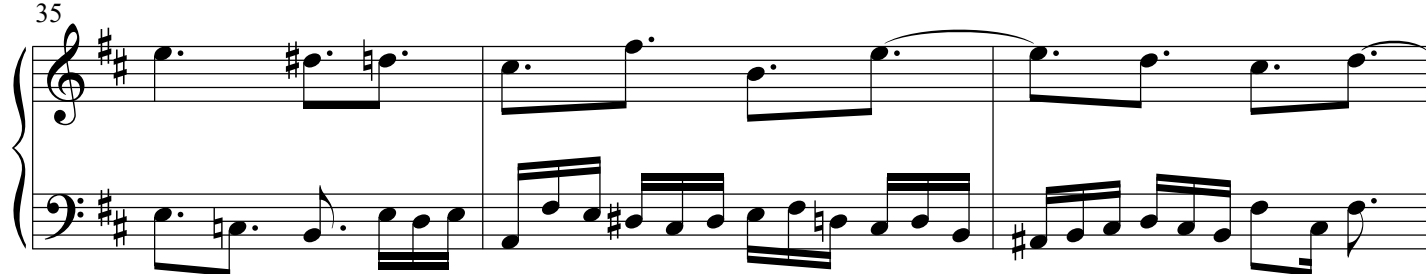
29



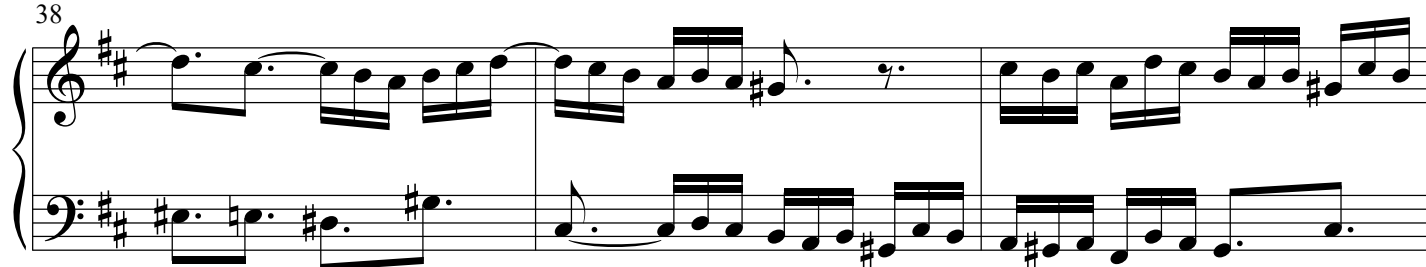
32



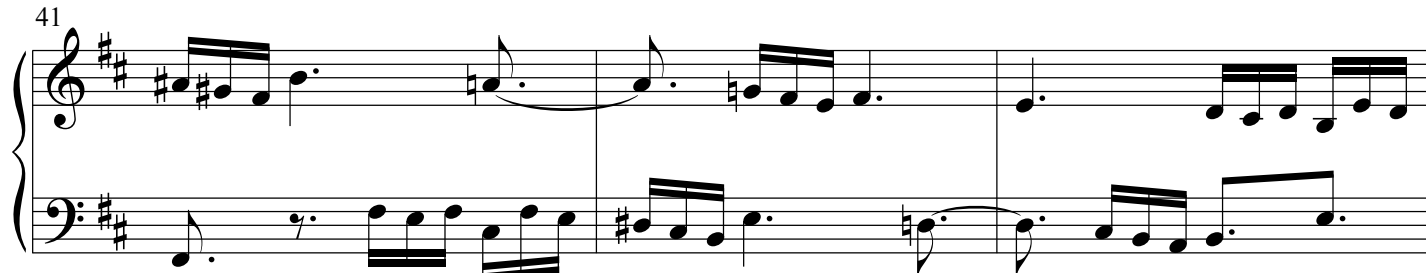
35



38



41



# Draeludium et Fuga IV - PIANO I

7

44

47

50

53

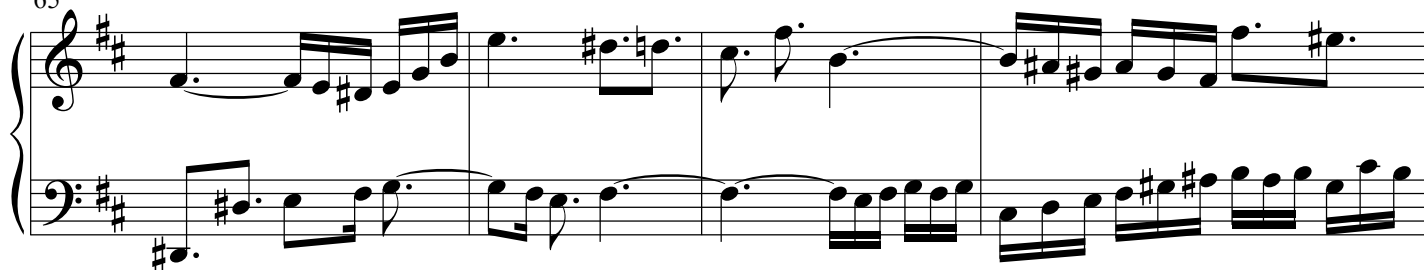
56

59

62



65



69

