

Praeludium et Fuga IV

BWV 873

J. SEBASTIAN BACH

PETER H. BESSELING

4

7

10

13

tr *tr*

Praeludium et Fuga IV - PIANO I

3

34

37

40

43

46

49

52

Measures 52-53 of the Praeludium. The key signature is two sharps (F# and C#). Measure 52 features a half note F#4 in the treble and a half note F#3 in the bass. Measure 53 continues with a half note G#4 in the treble and a half note G#3 in the bass, both tied to the previous measure.

54

Measures 54-55 of the Praeludium. Measure 54 begins with a trill (tr) on F#4 in the treble, followed by a half note G#4. The bass has a half note F#3. Measure 55 continues with a half note A4 in the treble and a half note A3 in the bass, both tied to the previous measure.

56

Measures 56-58 of the Praeludium. Measure 56 starts with a half note B4 in the treble and a half note B3 in the bass. Measure 57 continues with a half note C#5 in the treble and a half note C#4 in the bass. Measure 58 features a half note D5 in the treble and a half note D4 in the bass.

59

Measures 59-62 of the Praeludium. Measure 59 begins with a trill (tr) on F#4 in the treble, followed by a half note G#4. The bass has a half note F#3. Measure 60 continues with a half note A4 in the treble and a half note A3 in the bass. Measure 61 features a half note B4 in the treble and a half note B3 in the bass. Measure 62 concludes with a half note C#5 in the treble and a half note C#4 in the bass.

Fuga

Measures 1-3 of the Fuga section. The key signature is two sharps (F# and C#). The time signature is 12/16. Measure 1 features a half note F#4 in the treble and a half note F#3 in the bass. Measure 2 continues with a half note G#4 in the treble and a half note G#3 in the bass. Measure 3 features a half note A4 in the treble and a half note A3 in the bass.

4

Measures 4-6 of the Fuga section. Measure 4 begins with a half note B4 in the treble and a half note B3 in the bass. Measure 5 continues with a half note C#5 in the treble and a half note C#4 in the bass. Measure 6 features a half note D5 in the treble and a half note D4 in the bass.

Praeludium et Fuga IV - PIANO I

5

8

Measures 8-10 of the piece. The key signature is one sharp (F#). Measure 8 features a treble staff with eighth-note runs and a bass staff with a half-note chord and eighth-note accompaniment. Measure 9 continues the treble staff's eighth-note pattern and the bass staff's accompaniment. Measure 10 shows a continuation of the treble staff's eighth-note pattern and the bass staff's accompaniment.

11

Measures 11-13 of the piece. Measure 11 features a treble staff with a half-note chord and eighth-note accompaniment, and a bass staff with eighth-note runs. Measure 12 continues the treble staff's half-note chord and eighth-note accompaniment, and the bass staff's eighth-note runs. Measure 13 shows a continuation of the treble staff's half-note chord and eighth-note accompaniment, and the bass staff's eighth-note runs.

14

Measures 14-16 of the piece. Measure 14 features a treble staff with eighth-note runs and a bass staff with a half-note chord and eighth-note accompaniment. Measure 15 continues the treble staff's eighth-note pattern and the bass staff's accompaniment. Measure 16 shows a continuation of the treble staff's eighth-note pattern and the bass staff's accompaniment.

17

Measures 17-19 of the piece. Measure 17 features a treble staff with eighth-note runs and a bass staff with a half-note chord and eighth-note accompaniment. Measure 18 continues the treble staff's eighth-note pattern and the bass staff's accompaniment. Measure 19 shows a continuation of the treble staff's eighth-note pattern and the bass staff's accompaniment.

20

Measures 20-22 of the piece. Measure 20 features a treble staff with eighth-note runs and a bass staff with a half-note chord and eighth-note accompaniment. Measure 21 continues the treble staff's eighth-note pattern and the bass staff's accompaniment. Measure 22 shows a continuation of the treble staff's eighth-note pattern and the bass staff's accompaniment.

23

Measures 23-25 of the piece. Measure 23 features a treble staff with eighth-note runs and a bass staff with a half-note chord and eighth-note accompaniment. Measure 24 continues the treble staff's eighth-note pattern and the bass staff's accompaniment. Measure 25 shows a continuation of the treble staff's eighth-note pattern and the bass staff's accompaniment.

26

Measures 26-28 of the Praeludium. The key signature is two sharps (F# and C#). Measure 26 features a treble staff with a half note F#4, a quarter note G#4, and a quarter rest, followed by a half note A4 and a quarter note B4. The bass staff has a half note F#3, a quarter note G#3, and a quarter rest. Measure 27 has a treble staff with a half note A4, a quarter note B4, and a quarter note C#5, and a bass staff with a whole rest. Measure 28 has a treble staff with a half note B4, a quarter note C#5, and a quarter note D5, and a bass staff with a half note F#3, a quarter note G#3, and a quarter note A4.

29

Measures 29-31 of the Praeludium. Measure 29 has a treble staff with a half note A4, a quarter note B4, and a quarter note C#5, and a bass staff with a half note F#3, a quarter note G#3, and a quarter note A4. Measure 30 has a treble staff with a half note B4, a quarter note C#5, and a quarter note D5, and a bass staff with a half note F#3, a quarter note G#3, and a quarter note A4. Measure 31 has a treble staff with a half note C#5, a quarter note D5, and a quarter note E5, and a bass staff with a half note F#3, a quarter note G#3, and a quarter note A4.

32

Measures 32-34 of the Praeludium. Measure 32 has a treble staff with a half note A4, a quarter note B4, and a quarter note C#5, and a bass staff with a half note F#3, a quarter note G#3, and a quarter note A4. Measure 33 has a treble staff with a half note B4, a quarter note C#5, and a quarter note D5, and a bass staff with a half note F#3, a quarter note G#3, and a quarter note A4. Measure 34 has a treble staff with a half note C#5, a quarter note D5, and a quarter note E5, and a bass staff with a half note F#3, a quarter note G#3, and a quarter note A4.

35

Measures 35-37 of the Praeludium. Measure 35 has a treble staff with a half note A4, a quarter note B4, and a quarter note C#5, and a bass staff with a half note F#3, a quarter note G#3, and a quarter note A4. Measure 36 has a treble staff with a half note B4, a quarter note C#5, and a quarter note D5, and a bass staff with a half note F#3, a quarter note G#3, and a quarter note A4. Measure 37 has a treble staff with a half note C#5, a quarter note D5, and a quarter note E5, and a bass staff with a half note F#3, a quarter note G#3, and a quarter note A4.

38

Measures 38-40 of the Praeludium. Measure 38 has a treble staff with a half note A4, a quarter note B4, and a quarter note C#5, and a bass staff with a half note F#3, a quarter note G#3, and a quarter note A4. Measure 39 has a treble staff with a half note B4, a quarter note C#5, and a quarter note D5, and a bass staff with a half note F#3, a quarter note G#3, and a quarter note A4. Measure 40 has a treble staff with a half note C#5, a quarter note D5, and a quarter note E5, and a bass staff with a half note F#3, a quarter note G#3, and a quarter note A4.

41

Measures 41-43 of the Praeludium. Measure 41 has a treble staff with a half note A4, a quarter note B4, and a quarter note C#5, and a bass staff with a half note F#3, a quarter note G#3, and a quarter note A4. Measure 42 has a treble staff with a half note B4, a quarter note C#5, and a quarter note D5, and a bass staff with a half note F#3, a quarter note G#3, and a quarter note A4. Measure 43 has a treble staff with a half note C#5, a quarter note D5, and a quarter note E5, and a bass staff with a half note F#3, a quarter note G#3, and a quarter note A4.

Praeludium et Fuga IV - PIANO I

7

44

Measures 44-46. Treble clef: eighth-note runs, quarter rest. Bass clef: half note, quarter notes, eighth-note patterns.

47

Measures 47-49. Treble clef: half note, eighth-note runs, half note. Bass clef: eighth-note runs, quarter notes.

50

Measures 50-52. Treble clef: half note, eighth-note runs, half note. Bass clef: eighth-note runs, quarter notes.

53

Measures 53-55. Treble clef: half note, eighth-note runs, half note. Bass clef: eighth-note runs, quarter notes.

56

Measures 56-58. Treble clef: half note, eighth-note runs, half note. Bass clef: eighth-note runs, quarter notes.

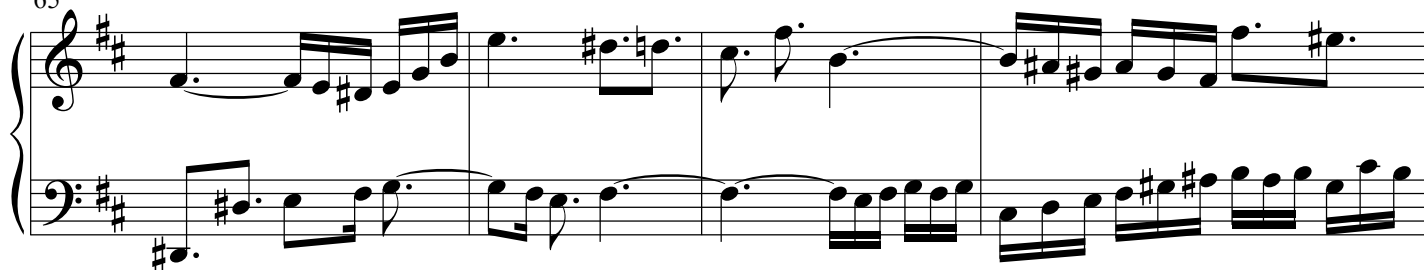
59

Measures 59-61. Treble clef: eighth-note runs, trill. Bass clef: half note, quarter notes, eighth-note patterns.

62



65



69

