

Violin

Toccata and Fugue in D minor

BWV 565

Johann Sebastian Bach (disputed)

Transcribed for Violin by Varun Soontornniyomkij

Adagio ♩ = 80

ff

Largo ♩ = 25

pp

Andante ♩ = 70

Lento ♩ = 50

Andante ♩ = 60

tr

ff

18

19

20

21

22

23

24

25

26

Andante ♩ = 50

Largo ♩ = 25

rit.

Andante ♩ = 50

Largo ♩ = 25

Andante ♩ = 50

Largo ♩ = 25

Andante ♩ = 50

Largo ♩ = 25

Andante ♩ = 50

Allegro ♩ = 90

pp 3 3 3 3 3 3 3 3 3 3 3 3

28

30

Lento ♩ = 30

ff

32

Fugue

Allegro ♩ = 90

34

f

36

38

41

43

45

47

49

51

53

55

58

60

63

66

69

This page contains a violin score for measures 47 through 69. The music is written on a single staff in G major (one sharp) and 4/4 time. The key signature has one sharp (F#). The score consists of nine staves of music. Measures 47-50 show a melodic line with eighth and sixteenth notes, often beamed together. Measures 51-54 continue this melodic development with some chromaticism. Measures 55-57 feature a more rhythmic, eighth-note pattern. Measures 58-60 show a change in texture with more frequent beaming. Measures 61-63 are marked *mf* (mezzo-forte) and feature a strong eighth-note pattern. Measures 64-66 are marked *f* (forte) and continue the eighth-note pattern. Measures 67-69 are marked *p* (piano) and feature a more melodic, eighth-note pattern. The score includes various musical notations such as stems, beams, flags, and slurs.

mf

f

p

f

72 *p* *f*

75

77

79

81

83

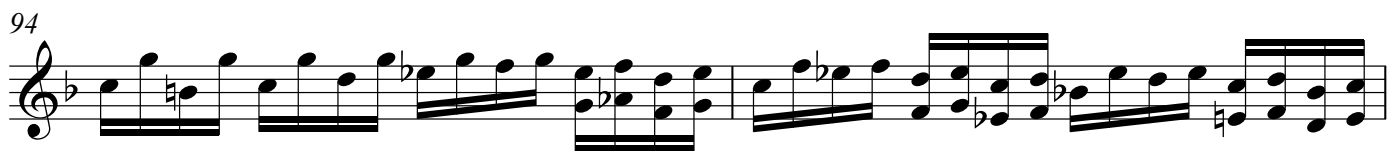
85

87

89 *V*

91

This page contains a violin score for measures 72 through 91. The music is written on a single staff in G major (one sharp) and 4/4 time. Measures 72-74 feature a rapid sixteenth-note scale starting on G4, marked *p* and *f*. Measures 75-88 continue with various rhythmic patterns, including eighth and sixteenth notes, often beamed together. Measures 89-91 show a return to sixteenth-note patterns, with measure 89 marked with a *V* (vibrato) symbol. The key signature has one sharp (F#) and the time signature is 4/4.



118

p cresc.

121

123

cresc. *ff*

125

127

129

Andante ♩ = 50 *rit.*

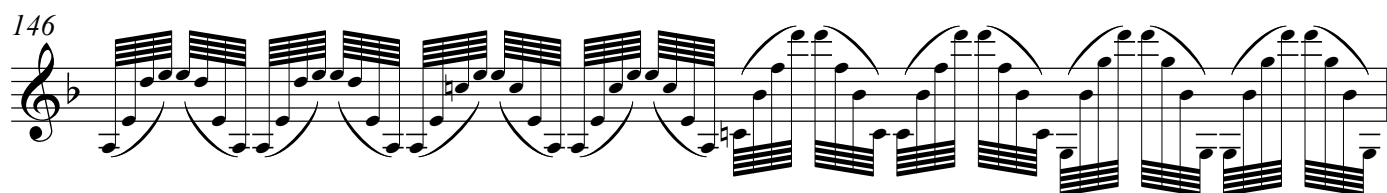
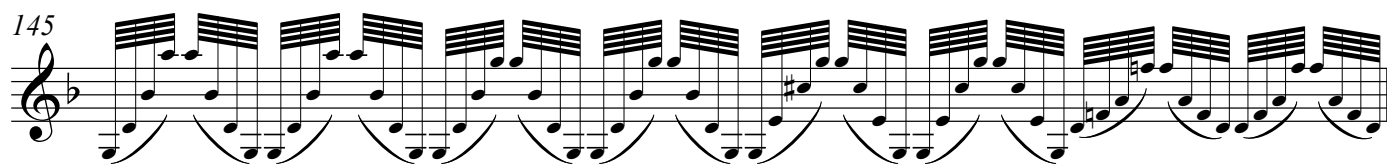
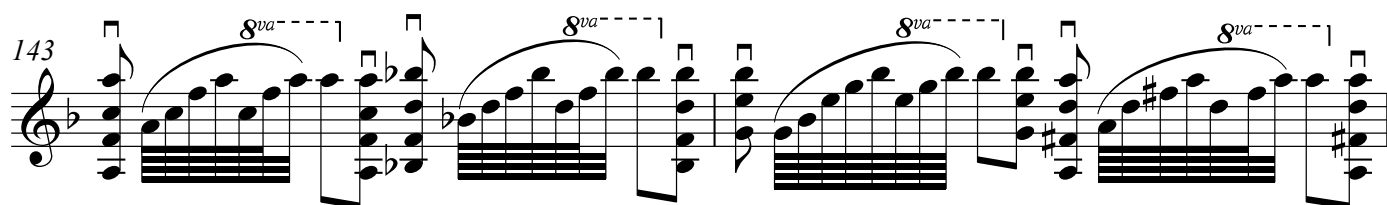
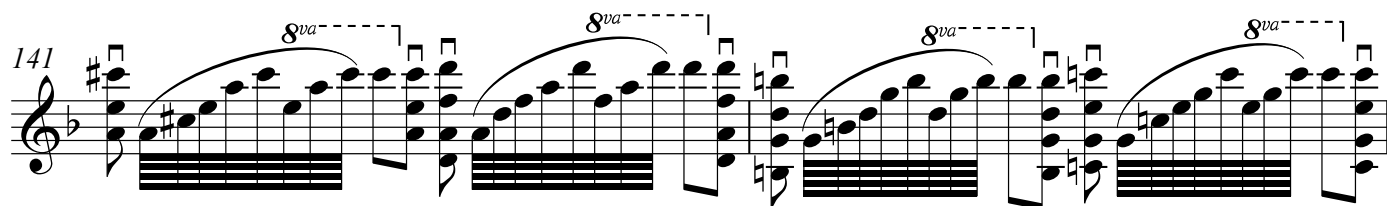
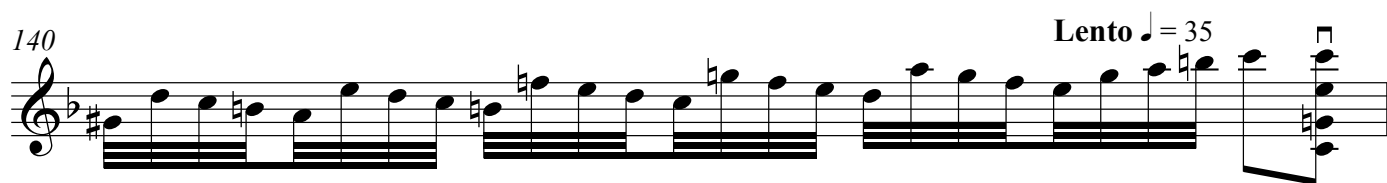
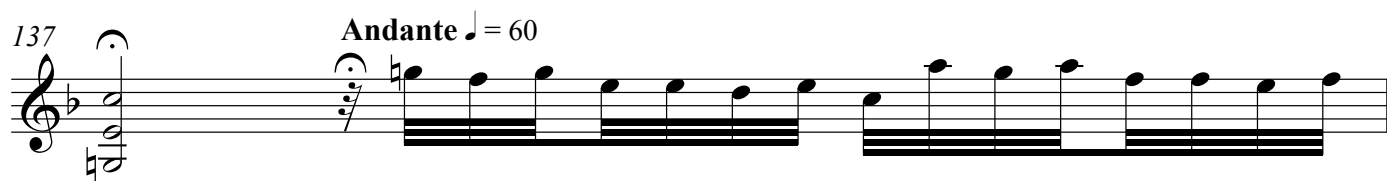
131

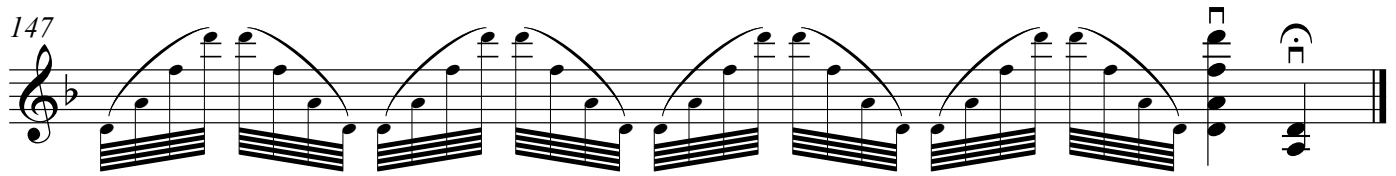
Largo ♩ = 25 *Recitativo*
Andante ♩ = 60

133

rit.
Adagissimo ♩ = 40

134





Note: If a note(s) in a chord is bracketed, it means that these notes are optional and omissible from performances.