

## Violin

## Toccata and Fugue in D minor

BWV 565

Note: A parenthesized note(s)  
of a chord is optional  
and omissible.

Johann Sebastian Bach (disputed)

Transcribed for Violin by Varun Soontornniyomkij

**Adagio** ♩ = 80

**Largo** ♩ = 25

**Andante** ♩ = 70

**Lento** ♩ = 50

**Andante** ♩ = 60

*ff*

*pp*

*ff*

*tr*

5

8

9

11

13

15

17

18

19

20

21

22

23

24

25

26

*Andante* ♩ = 50

*Largo* ♩ = 25

*rit.*

*Andante* ♩ = 50

*Largo* ♩ = 25

*Andante* ♩ = 50

*Largo* ♩ = 25

*Andante* ♩ = 50

*Largo* ♩ = 25

*Andante* ♩ = 50

*Allegro* ♩ = 100

*pp* 3 3 3 3 3 3 3 3 3 3 3 3

28

30

Lento ♩ = 30

*ff*

32

Fugue

Allegro ♩ = 90

34

*f*

36

38

41

43

45

47

49

51

53

55

58

60

63

66

69

This page of a violin score contains measures 47 through 72. The music is written in a single system on a treble clef staff with a key signature of one flat (B-flat). The tempo and meter are not explicitly stated. The score features a variety of rhythmic patterns, including eighth and sixteenth notes, and rests. Dynamic markings are present at measures 60 (*mf*), 63 (*f*), 66 (*p*), and 69 (*f*). The notation includes many beamed notes and some notes with slurs. The page number '4' is in the top left, and the instrument name 'Violin' is centered at the top.

72 *p* *f*

75

77

79

81

83

85

87

89 *V* *V*

91

This page of a violin score contains ten staves of music, numbered 72 through 91. The key signature is one flat (B-flat). The music is written in a single melodic line. Measures 72-74 feature a dynamic range from *p* (piano) to *f* (forte). Measures 75-88 consist of continuous eighth-note patterns with various slurs and ties. Measures 89-91 include two measures marked with a 'V' (likely indicating a breath mark or a specific articulation) and continue the eighth-note patterns. The notation includes various accidentals (sharps, flats, naturals) and slurs to indicate phrasing and articulation.

94

96

*mf*

99

101

103

105

107

110

*f*

113

116

This page of a violin score contains measures 94 through 116. The music is written on a single staff in G major (one sharp) and 4/4 time. The key signature has one sharp (F#). The score is divided into systems of four measures each. Measure numbers 94, 96, 99, 101, 103, 105, 107, 110, 113, and 116 are placed at the beginning of their respective systems. Dynamic markings include *mf* (mezzo-forte) at measure 96 and *f* (forte) at measure 110. The notation includes various rhythmic values such as eighth, sixteenth, and thirty-second notes, as well as rests and accidentals. The piece concludes with a double bar line at the end of measure 116.

118

*p cresc.*

121

123

*cresc.* *ff*

125

127

129

Andante ♩ = 50 rit.

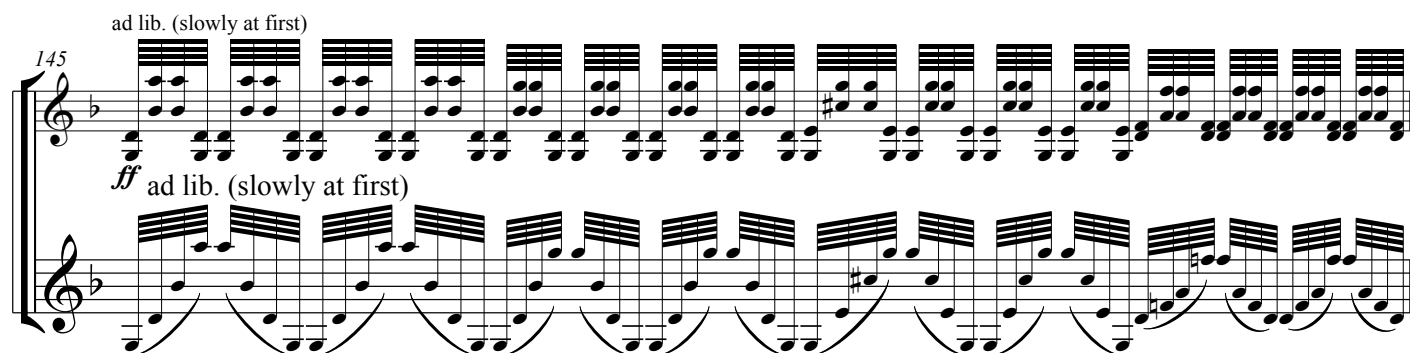
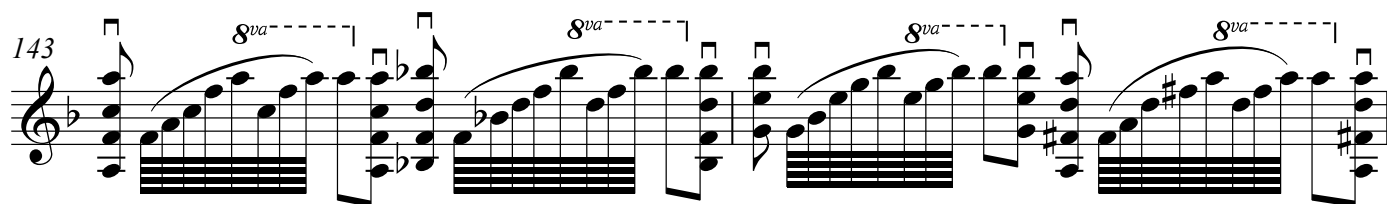
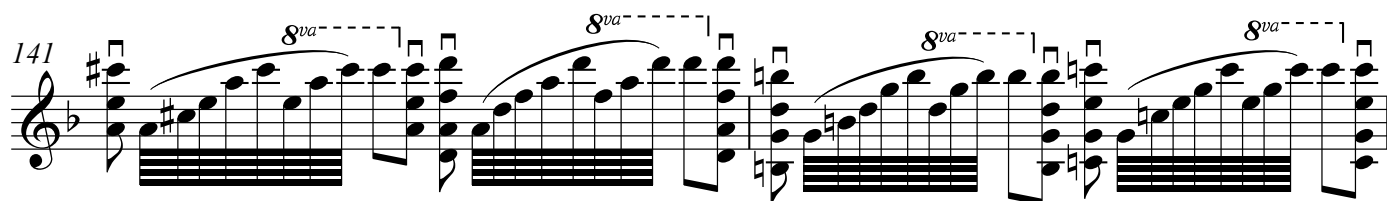
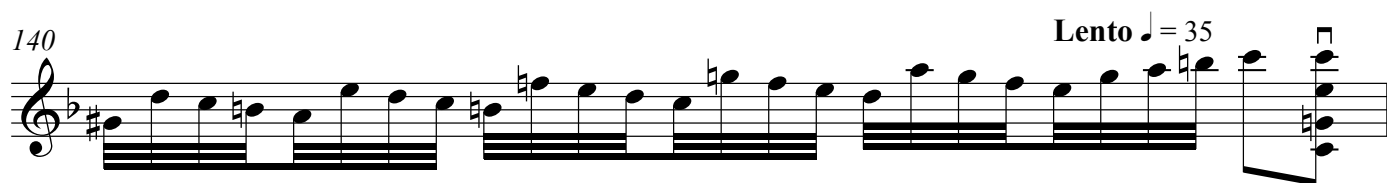
131

Largo ♩ = 25 Recitativo  
Andante ♩ = 60

133

rit. Adagissimo ♩ = 40

134





146

Measures 146-150 of a violin and piano arrangement. The violin part (top staff) features a continuous sixteenth-note tremolo in the right hand and a steady eighth-note pattern in the left hand. The piano part (bottom staff) has a melodic line in the right hand with slurs and a dense, rhythmic accompaniment in the left hand consisting of repeated eighth-note chords.

147

Measures 147-151 of a violin and piano arrangement. The violin part (top staff) continues with a tremolo in the right hand and eighth notes in the left hand. The piano part (bottom staff) features a melodic line in the right hand with slurs and a rhythmic accompaniment in the left hand. The piece concludes at measure 151 with a final chord in both hands.