

Violin

Tocatta and Fugue in D minor

BWV 565

Note: A parenthesized note(s)
of a chord is optional
and omissible.

Johann Sebastian Bach (disputed)

Transcribed for Violin by Varun Soontornniyomkij

Adagio ♩ = 80

Largo ♩ = 25

Andante ♩ = 70

Lento ♩ = 50

Andante ♩ = 60

rit.

ff

pp

tr

rit.

5 *sul G*

9

11

13

15

17

18

19

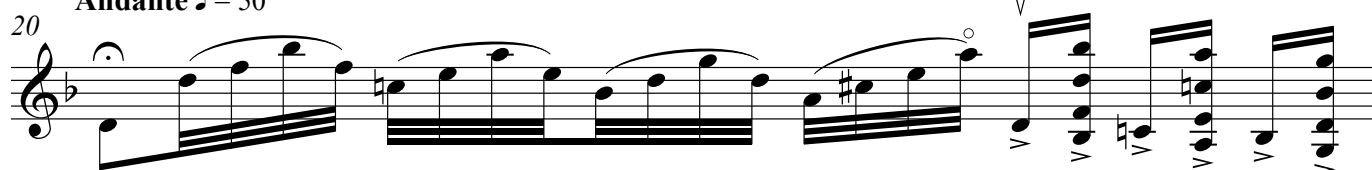
V.S.

2

Violin

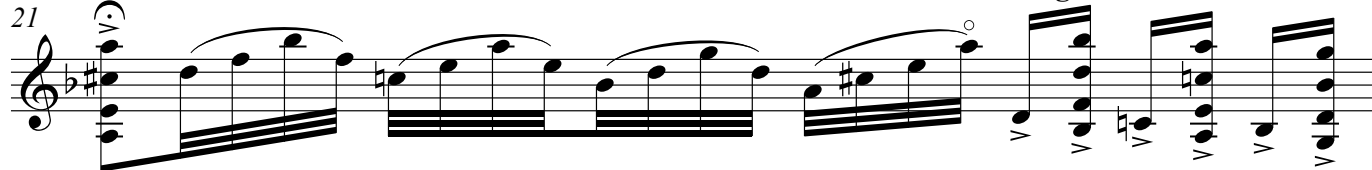
Andante ♩ = 50

Largo ♩ = 25

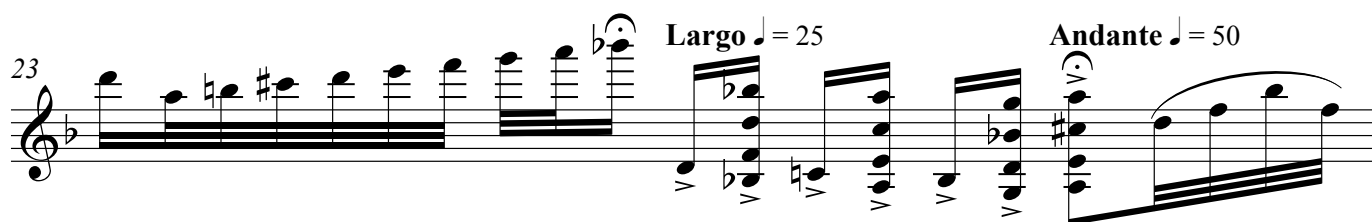
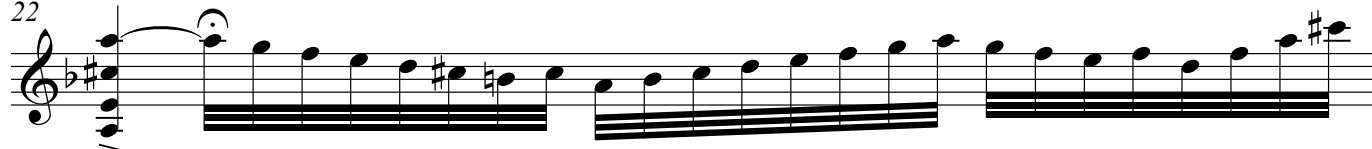


Andante ♩ = 50

Largo ♩ = 25



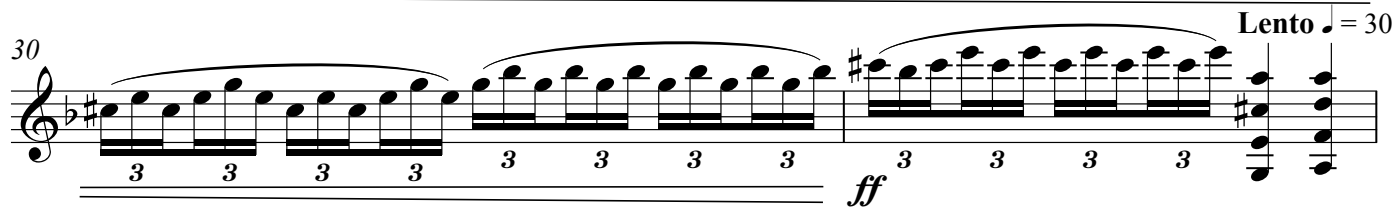
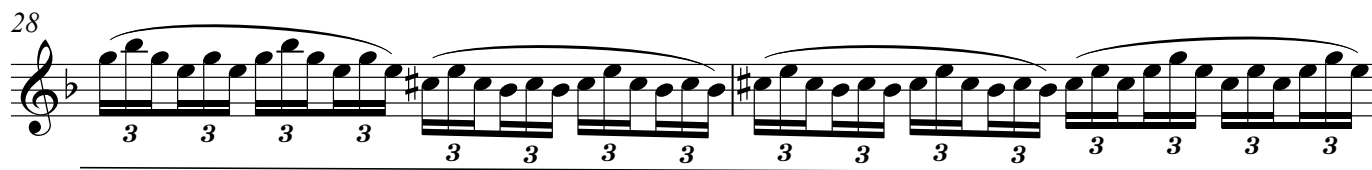
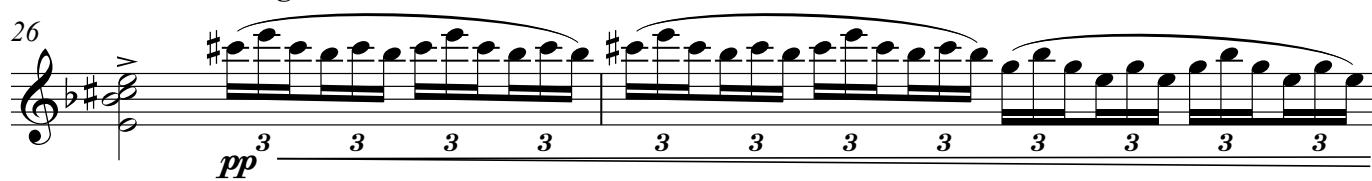
Andante ♩ = 50



Andante ♩ = 50



Allegro ♩ = 100



32

Fugue

34

Allegro non troppo ♩ = 85

f

36

39

42

44

46

48

50

52

This page contains a violin score for a fugue, spanning measures 32 to 52. The music is written in a single staff in G major (one sharp) and 3/4 time. The tempo is marked 'Allegro non troppo' with a metronome marking of 85 beats per minute. The dynamics include a forte (*f*) marking at measure 34. The score features complex rhythmic patterns, including sixteenth and thirty-second notes, and various articulations such as slurs, accents, and staccato marks. The key signature changes to E major (two sharps) at measure 42. The piece concludes with a double bar line at measure 52.

54

56

59

61 *mf* *f*

64

67 *p*

70 *f* *p*

73 *f*

76 *p*

78 *cresc.*

This image shows a page of a violin score, numbered 4. The title "Violin" is centered at the top. The score consists of nine staves of music, each beginning with a measure number. The key signature is one flat (B-flat). The music is written in a single system. The staves are numbered 54, 56, 59, 61, 64, 67, 70, 73, and 78. The notation includes various rhythmic values, accidentals, and dynamic markings. The dynamics are *mf* (mezzo-forte), *f* (forte), *p* (piano), and *cresc.* (crescendo). The music features a mix of eighth and sixteenth notes, often beamed together in groups. There are also some triplets and slurs. The overall style is classical or romantic.

81

83

86

89

91

94

97

100

102

104

cresc.

f

mf

V

V

V.S.

106

109

112

115

117

120

123

125

127

Andante ♩ = 50

rit. - - -

Largo ♩ = 25

Recitativo

Andante ♩ = 60

130

f

p *cresc.*

cresc. *ff*

132

133

rit. - - - - -

134

Adagissimo ♩ = 40

137

Andante ♩ = 60

138

139

140

Lento ♩ = 35

141

8va

143

8va

V.S.

ad lib. (slowly at first)

The image displays a violin score for measures 145, 146, and 147. The music is written in a single system with a treble clef and a key signature of one flat (B-flat). Measure 145 begins with a forte (ff) dynamic and a tempo marking of 'ad lib. (slowly at first)'. The melody consists of a series of eighth-note chords, primarily triads, moving in a descending sequence. Measure 146 continues this pattern, with the right hand playing eighth-note chords and the left hand providing a harmonic accompaniment of eighth notes. Measure 147 concludes the sequence with a final chord. The score is presented in a clean, professional layout with clear notation and dynamic markings.