

Violin

Transcribed for Violin by
Varun Soontornniyomkij

Toccata and Fugue in D minor

BWV 565

Johann Sebastian Bach (disputed)

Adagio ♩ = 80

ff

5 *sul G*

Largo ♩ = 25

pp

9 **Andante** ♩ = 70

11

13 **Lento** ♩ = 50

ff

15 **Andante** ♩ = 60

tr

17

18

19 *rit.*

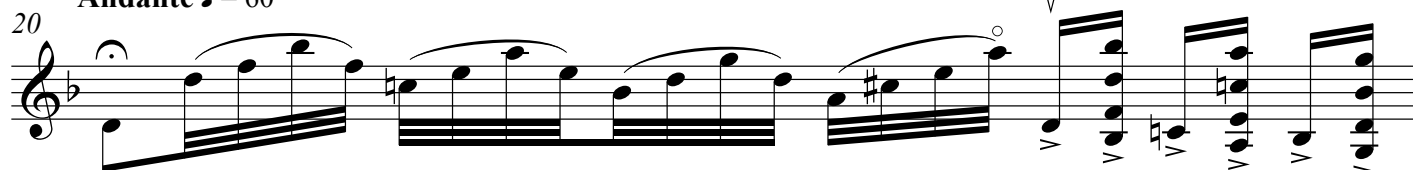
V.S.

2

Violin

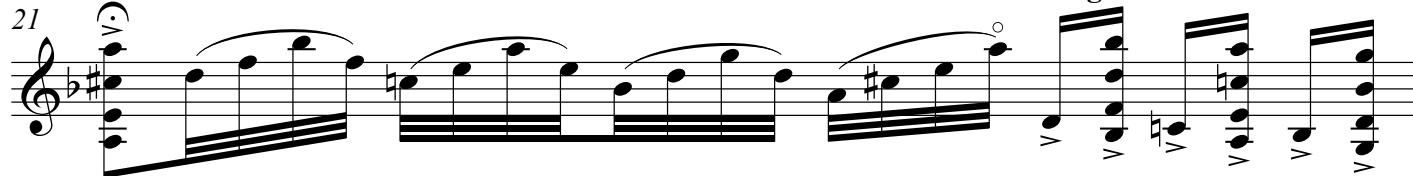
Andante ♩ = 60

Largo ♩ = 25

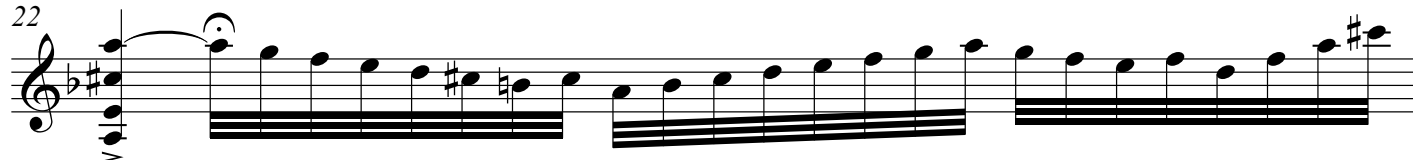


Andante ♩ = 60

Largo ♩ = 25



Andante ♩ = 50



Largo ♩ = 25

Andante ♩ = 60



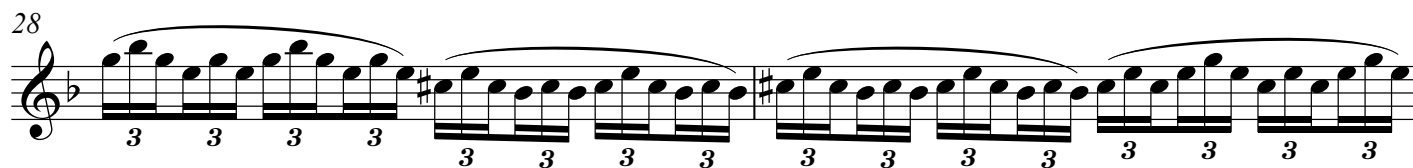
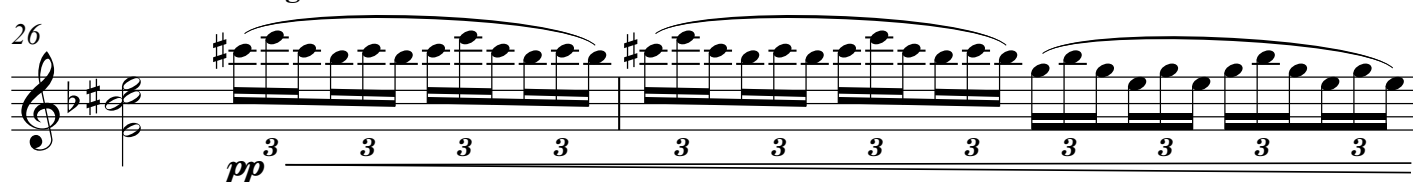
Largo ♩ = 25



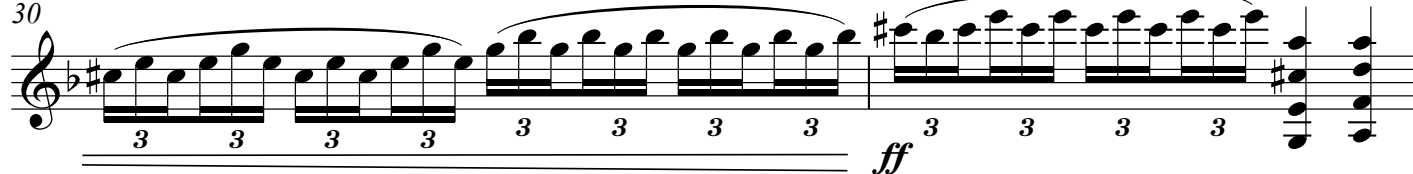
Andante ♩ = 50



Allegro ♩ = 100



Lento ♩ = 30



32

Fugue

34 Allegro non troppo ♩ = 85

36

39

42

44

46

49

51

53

Note: If a note of a double stop or a triple stop is in parentheses, then that note is optional and omissible from performance.

55

58

60

63

66

69

72

75

77

79

mf

f

p

f

p

f

p

cresc.

82

cresc.

85

f

88

V

90

93

95

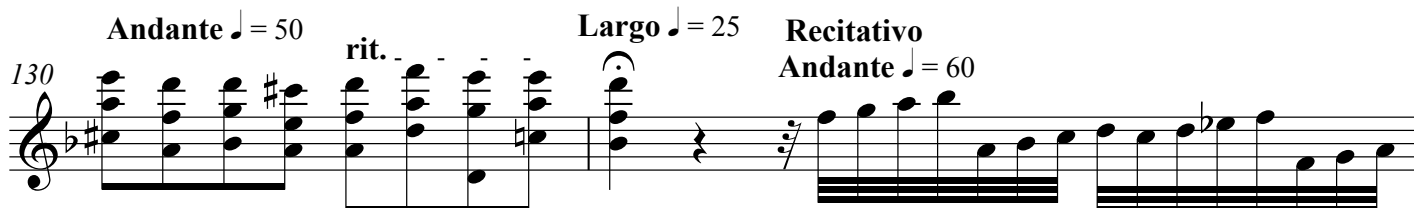
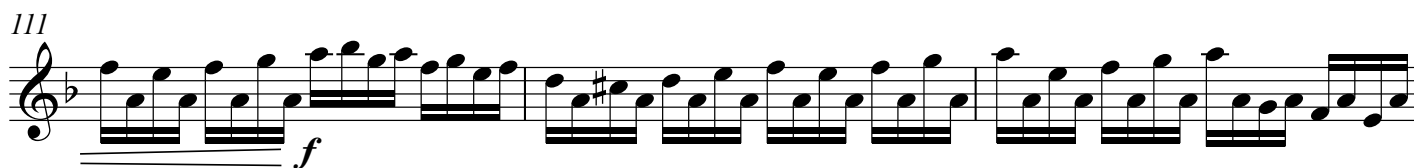
mf

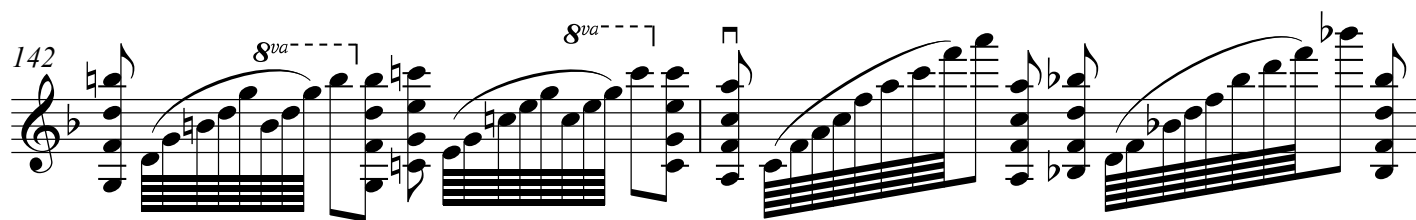
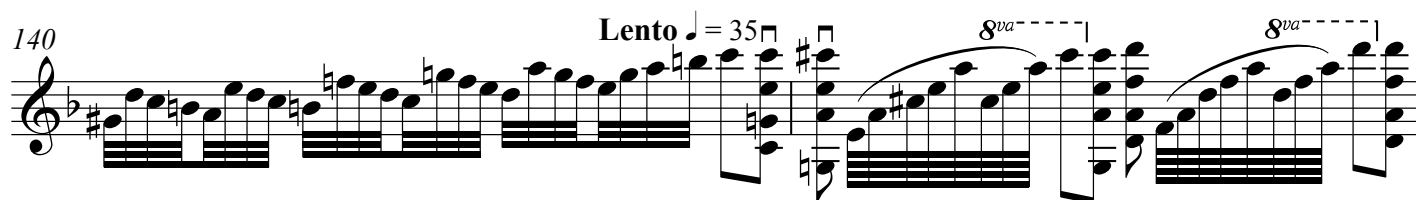
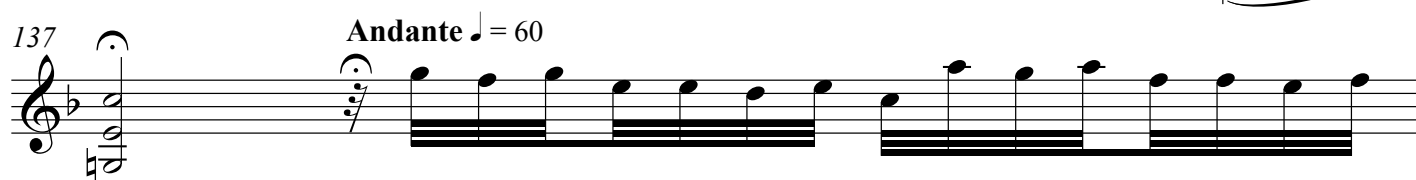
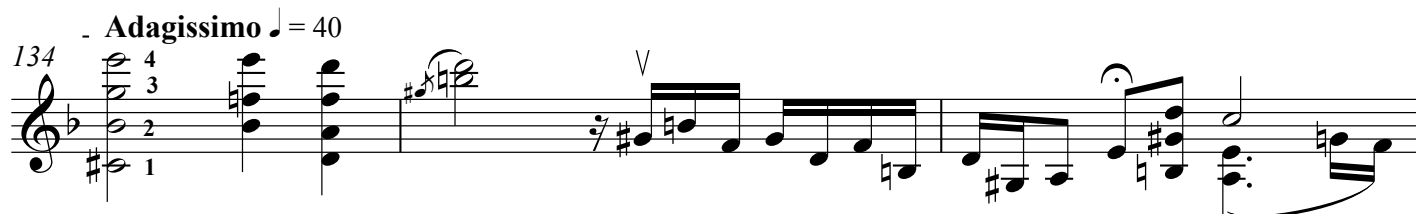
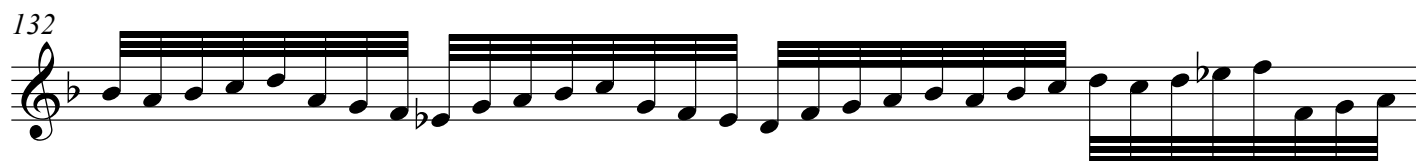
98

101

103

105





ad lib. (slowly at first)

145

ff

This system contains measures 145 and 146. Measure 145 features a rapid sixteenth-note arpeggiated figure in the right hand, starting on G4 and ascending to E5, with a forte (*ff*) dynamic. The left hand provides a simple harmonic accompaniment with chords on G3, B2, and D3. Measure 146 continues the arpeggiated figure in the right hand, which now includes some beamed eighth notes, while the left hand accompaniment remains similar.

146

This system contains measures 146 and 147. Measure 146 continues the rapid sixteenth-note arpeggiated figure in the right hand. The left hand accompaniment includes a slur over the first two chords. Measure 147 continues the arpeggiated figure in the right hand, which becomes more complex with some beamed eighth notes. The left hand accompaniment continues with similar chords.

147

This system contains measures 147 and 148. Measure 147 continues the rapid sixteenth-note arpeggiated figure in the right hand. The left hand accompaniment continues with similar chords. Measure 148 features a final arpeggiated figure in the right hand, ending with a half note chord on G4 and B4. The left hand accompaniment continues with similar chords.