

Harp

Piano Concerto in G

I. Allegramente

Maurice Ravel

Allegramente $\text{♩} = 116$
Eb, F#, G#, A# **9**

1 **9** **2** **13-15** **3**

16-24 **9** **f** **G#** **B#**

29

35 **3** **ff**

39 **Eb, A#** **2** **Bb, Db** **42-43** **2**

4 **Meno vivo** **8** **5** **9**

44-51 **8** **52-60** **9**

61

6

8^{va}

Pno.

mf

gliss.

64

F \flat b \flat G \flat b \flat A \flat

8

67-74

8

C \sharp

7

9

8

12

75-83

9

84-95

12

9

3

96-98

3

W.B.

mf

10 Tempo primo (♩ =120)

4

103-106

4

112

11

118

E \flat F \sharp A \flat

B \sharp D \sharp

12

3

123–125

3

F \sharp

f

4

127–130

4

13

3

131–133

3

F \sharp G \sharp

4

C \sharp

135–138

4

14

3

139–141

3

8

142–149

8

15

Hn.

9

153–161

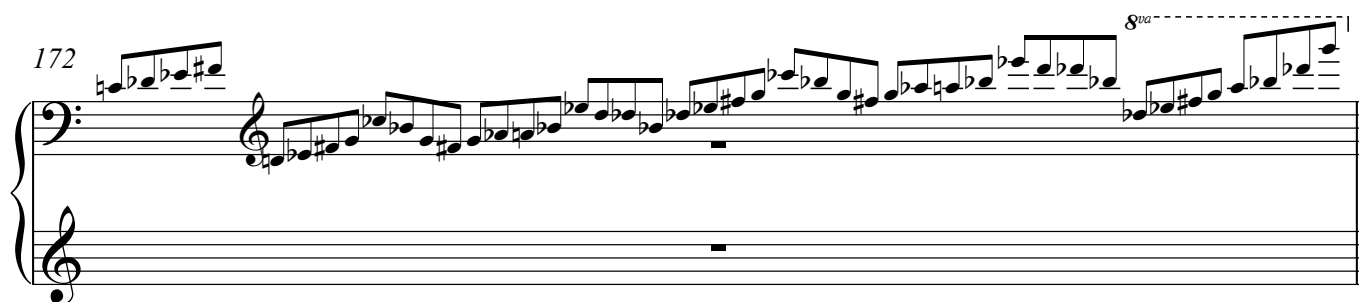
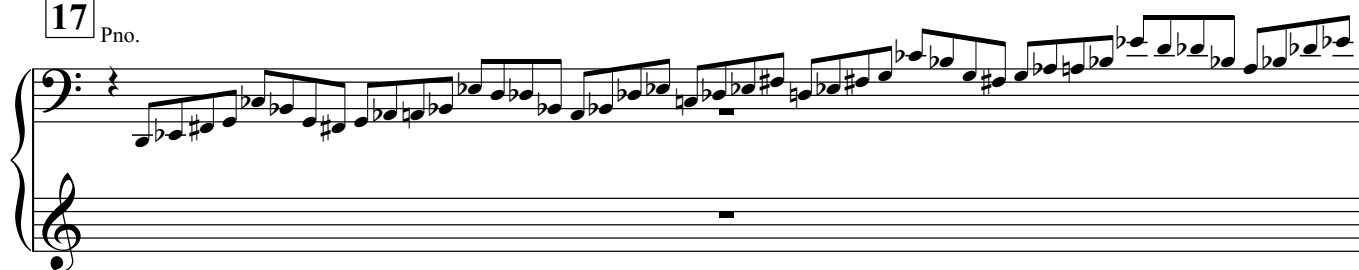
9

16

9

162–170

9

17 Pno.**18**

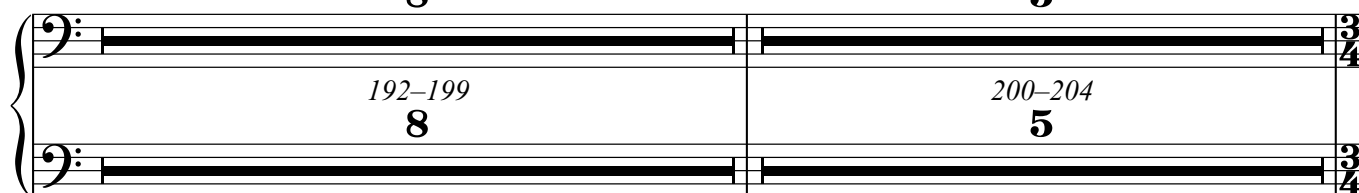
G# ————— ♭ ————— # —————

**19** F#**20** *Meno vivo*

8

21

5



Andante
Quasi Cadenza

22

glissando a piacere

gliss. 8va---|

pp

p

8va---|

210

23

F# Ab

B# D#

214

24

8va---|

8va---|

8va---| Tempo Primo ♩ = 84

25 Andante a piacere

G#

Cb

218-221

222-230

26

Pno.

Pno.

tr

6

6

6

233

4

8

234-237

238-245

28

27

7

Accelerando

246–252

7

29

Tempo Primo $\text{♩} = 120$

12

30

8

256–267

12

268–275

8

31

Tpt.

4

278–281

4

32

8

33

6

34

Tpt.

282–289

8

290–295

6

8^{va}

4

298–301

4

f

35

8

36

11

306–313

8

314–324

11

II. Adagio Assai

Adagio Assai $\text{♩} = 76$

Eb, F#

33

1

Fl.

1-33

Ab, Cb, Db

33

37

7

5

38-44

7

45-49

5

3

5

50-52

3

53-57

5

4

Pno.

6

6

6

7

8

59-65

7

66-73

8

5

6

C. A.

6

78-83

6

7

7

84-90

7

8 C. A.

4

93–96

4

9

3

100–102

3

10

6

103–108

6

III. Presto

9

Presto ♩ = 160
E♭, F♭, G♭, A♭

1

16 **8**

1-16 **16** 17-24 **8**

B♭, C♭, D♭

2 Picc.

8

29-36 **8**

3 **8** Vln. I pizz. **4** **7**

37-44 **8** 50-56 **7**

5 *p*

6 **6** F♯ **4** F♭, A♭ **4**

66-71 **6** 75-78 **4**

C♭

7 **11**

79-89 **11**

Harp

8 Tbn. 4 9 6 Pno.

91-94 4 95-100 6

102 2 105-106 2

A \sharp D \flat

10 Eb 7 11 13

108-114 7 115-127 13

B \flat

12 12 13 4

128-139 12 140-143 4

6 Cym. 6 F \sharp C \sharp , D \sharp

144-149 6

f

14 4 4 Bsn.

154-157 4

162

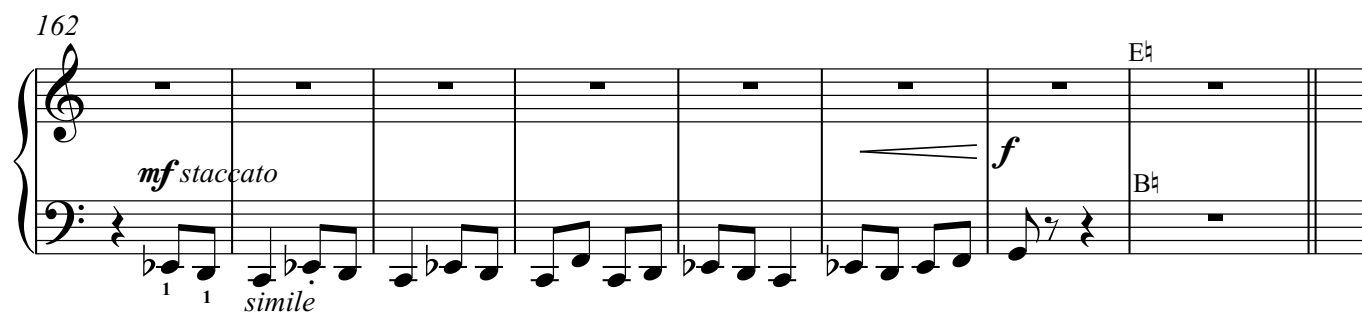
mf staccato

f

simile

E \sharp

B \sharp



15

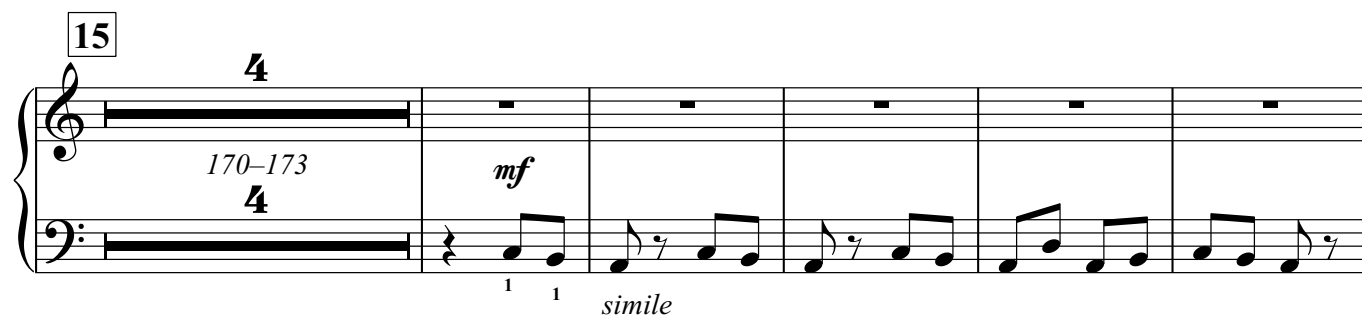
4

170–173

4

mf

simile



179

F \flat

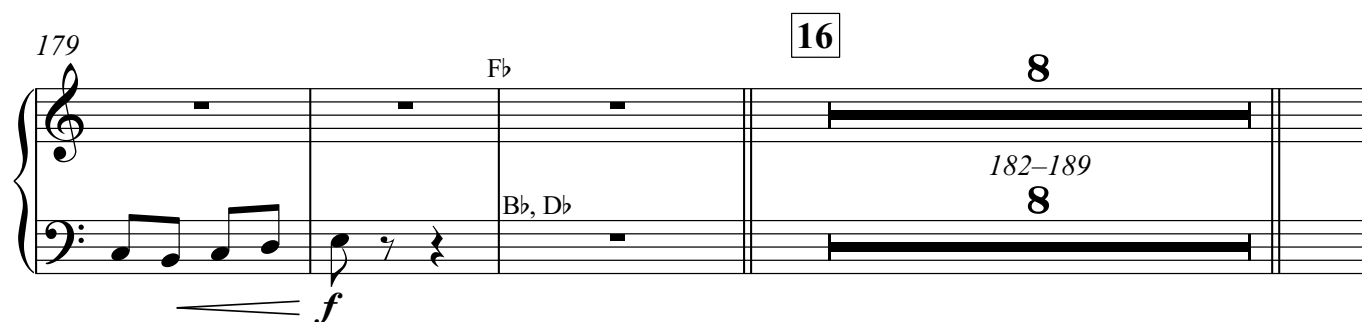
B \flat , D \flat

8

182–189

8

f

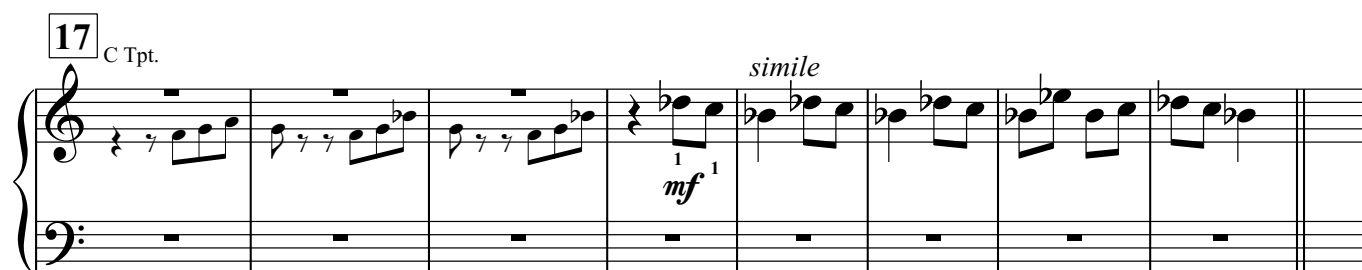


17

C Tpt.

simile

mf



18

F \flat

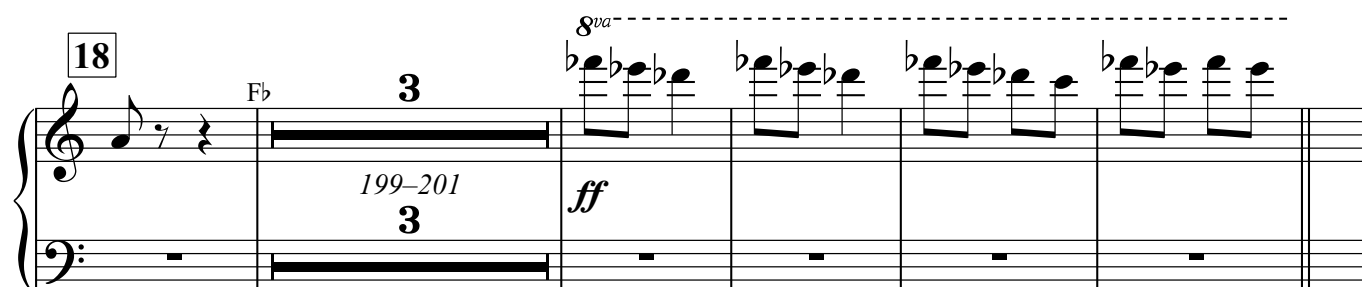
3

199–201

3

ff

8^{va}



19

(8)^{va}

3

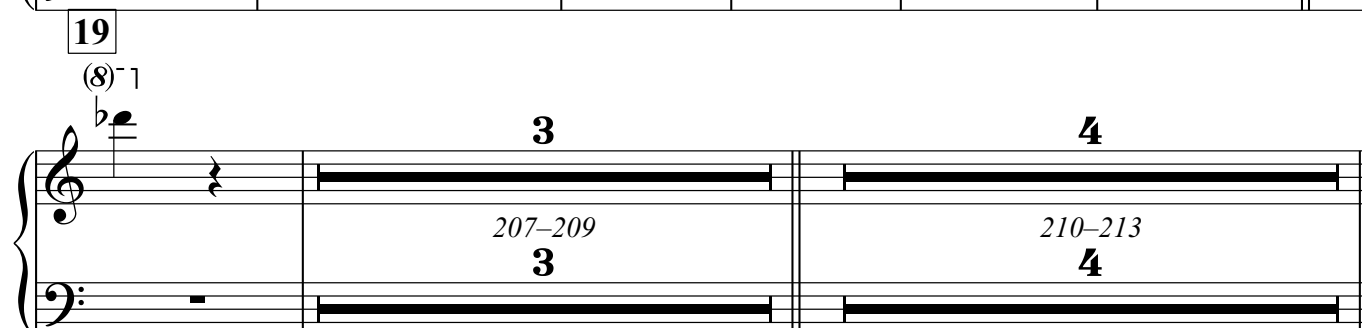
207–209

3

4

210–213

4



12 **20**

6 **Harp** **4** **6**

214–219 220–223 224–229

6 **4** **6**

21 Ob.

11

235–245

11

22

8 Eb Cl.

246–253

8

23

12 **24** **19**

ff 257–268 269–287

12 **19**

25 **26**

7 **12**

288–294 295–306

7 **12**