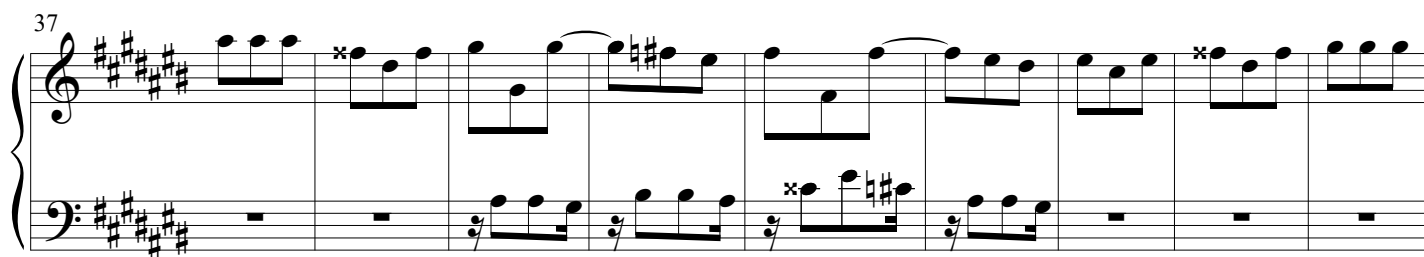
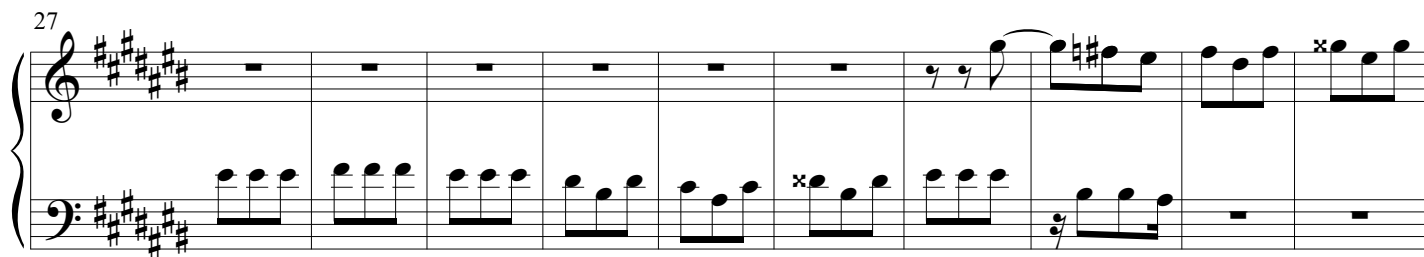
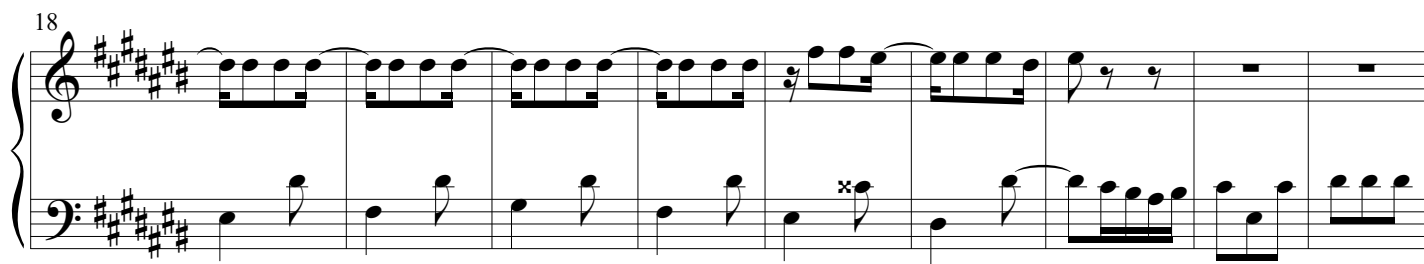
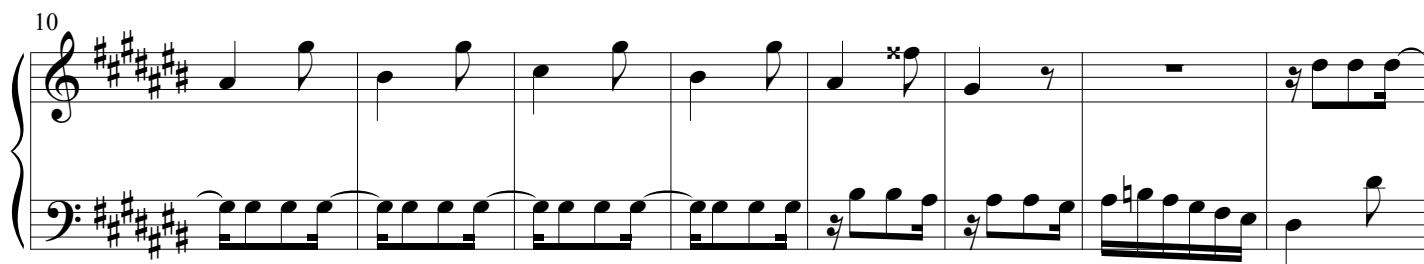
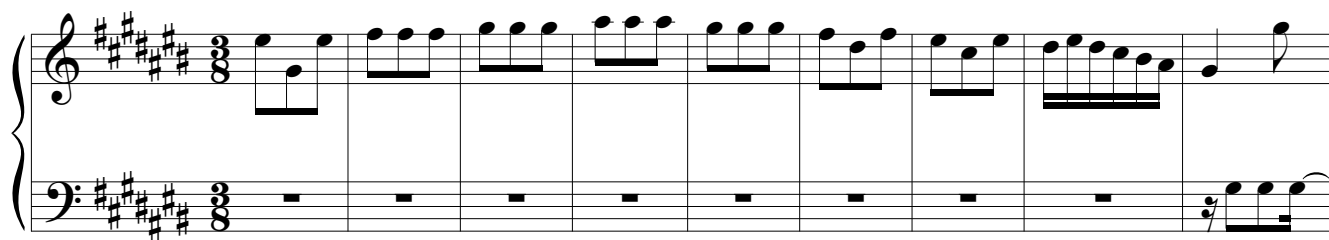


Piano I

Praeludium et Fuga

BWV 848

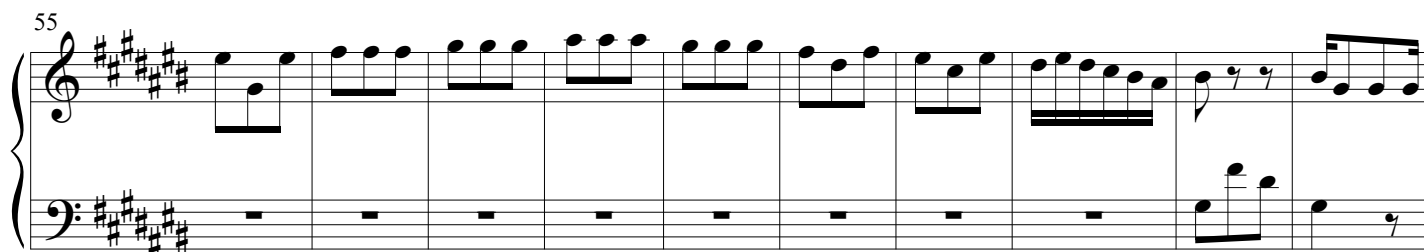
J. Sebastian Bach
Arr. Peter H. Besseling



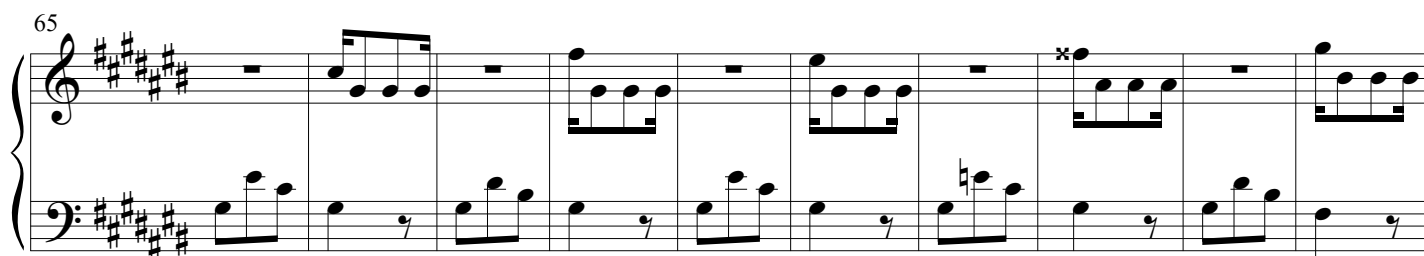
46



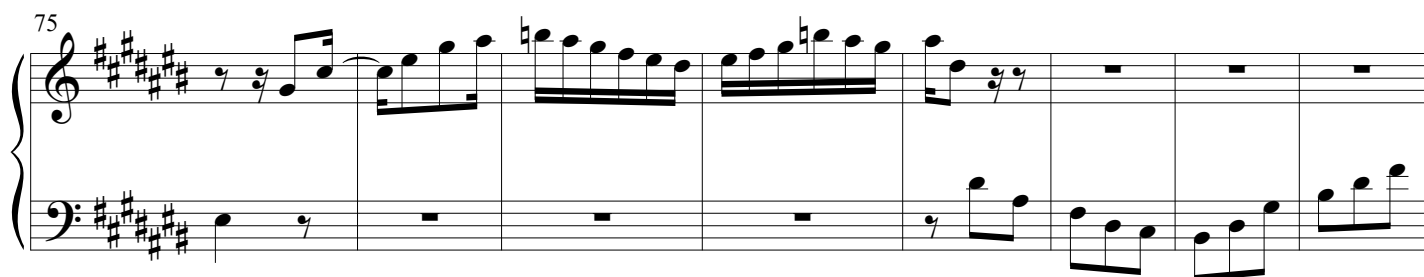
55



65



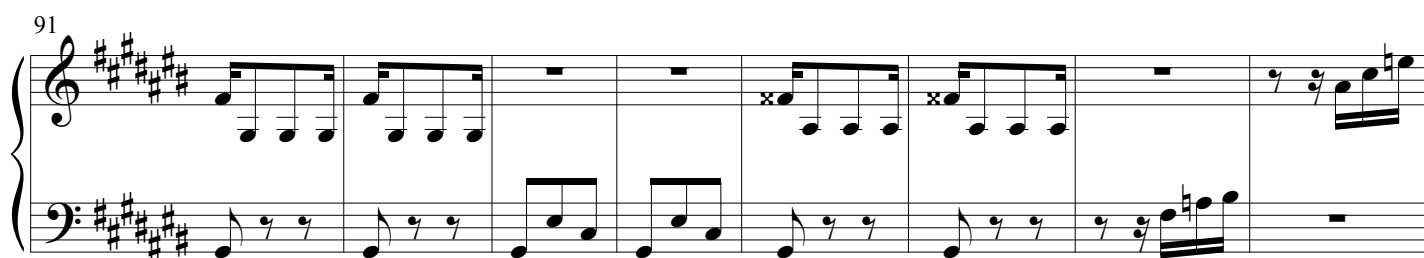
75



83



91



99

Fuga

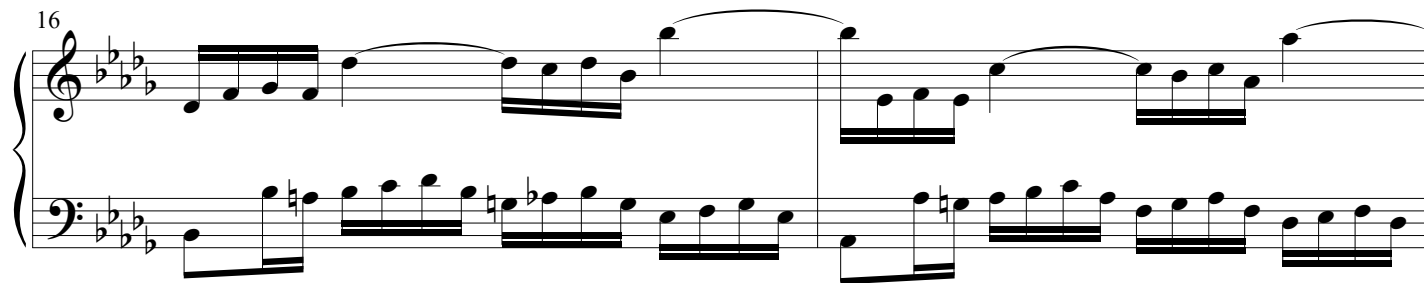
4

7

10

13

16



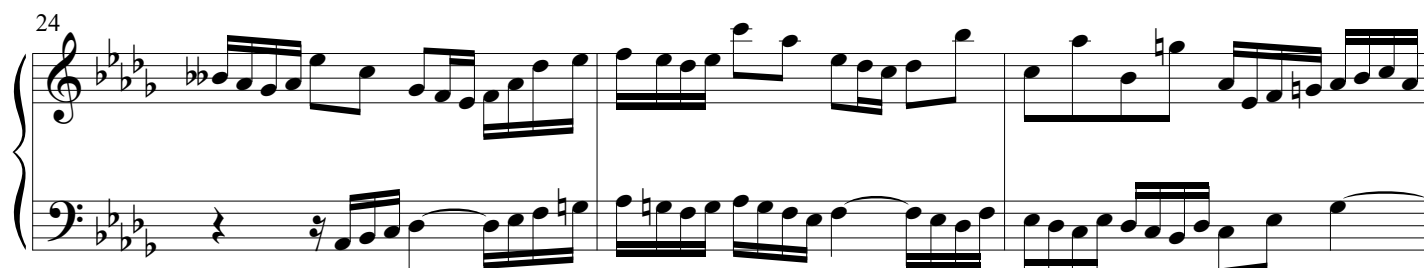
18



21



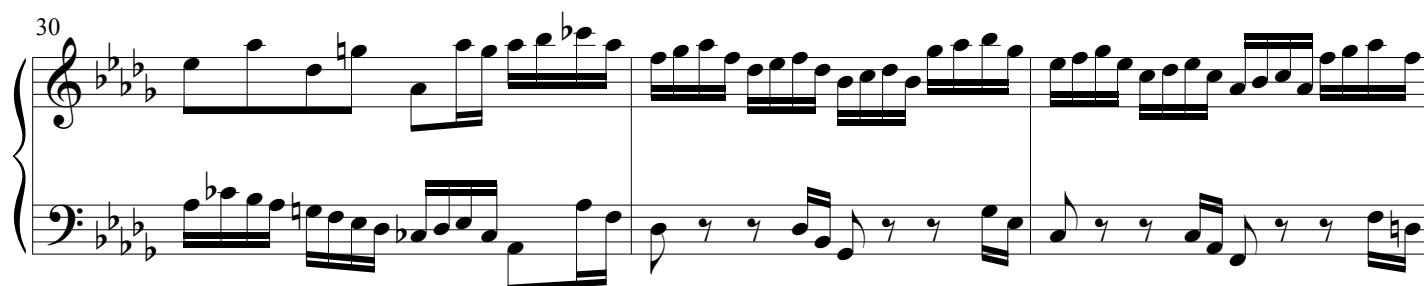
24



27



30



33

36

39

41

44

47

50

53

The image shows a musical score for a piano piece. The title is "Praeludium et Fuga III - Piano I". The score is written for piano (Piano I) and is in the key of B-flat major (three flats: B-flat, E-flat, A-flat). The time signature is 4/4. The score is divided into two systems. The first system starts at measure 50 and ends at measure 52. The second system starts at measure 53 and ends at measure 55. The notation is in standard musical notation with a grand staff (treble and bass clefs). The music features a mix of eighth and sixteenth notes, with some measures containing triplets. The piece concludes with a final cadence in measure 55.