

Alles was Odem hat

BWV 225
aus der Motette

- Singet dem Herrn -

J.S. Bach

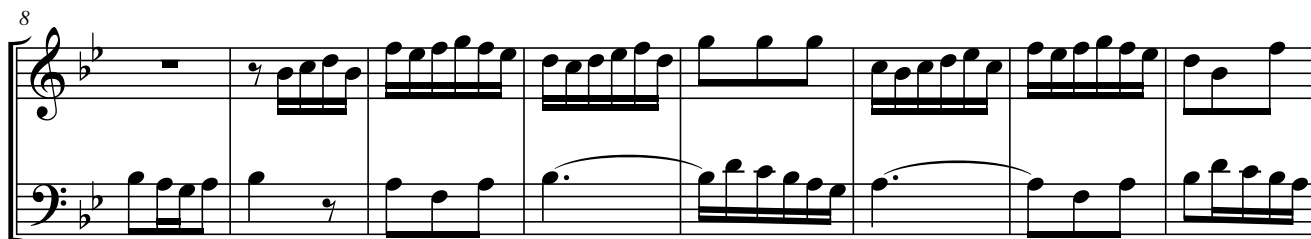
M. Olschewski, 2013

♩.=60

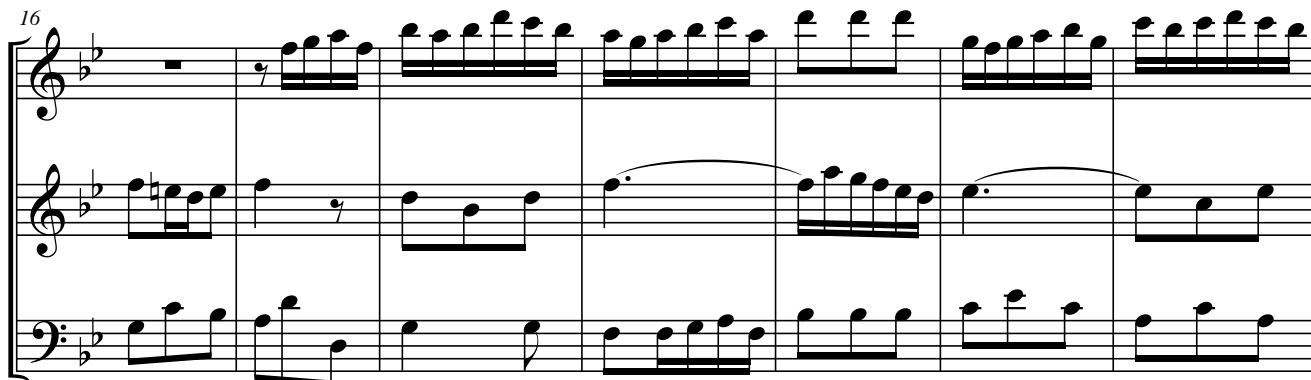
Bassblockflöte



Tbfl.



Abfl.



Sbfl.



Alles was Odem hat

2
30

Sbfl.

Abfl.

Tbfl.

Bbfl.

37

Sbfl.

Abfl.

Tbfl.

Bbfl.

44

Sbfl.

Abfl.

Tbfl.

Bbfl.

51

Sbfl.

Abfl.

Tbfl.

Bbfl.

58

Sbfl.

Abfl.

Tbfl.

Bbfl.

65

Sbfl.

Abfl.

Tbfl.

Bbfl.

Alles was Odem hat

4
72

Sbfl.

Abfl.

Tbfl.

Bbfl.

This system contains measures 72 through 78. The key signature has two flats (B-flat and E-flat). The Soprano Flute (Sbfl.) part begins with a sharp sign on the first staff, indicating a key change or a specific fingering. The woodwind parts (Alto Flute, Tenor Flute, and Bass Flute) play a rhythmic pattern of eighth and sixteenth notes, with some measures featuring slurs and ties. The Bass Flute part is written in the bass clef.

79

Sbfl.

Abfl.

Tbfl.

Bbfl.

This system contains measures 79 through 85. The key signature remains two flats. The Soprano Flute (Sbfl.) part has a whole rest in the first measure, followed by a series of eighth and sixteenth notes. The woodwind parts continue with their rhythmic patterns, featuring various slurs and ties. The Bass Flute part is written in the bass clef.

86

Sbfl.

Abfl.

Tbfl.

Bbfl.

This system contains measures 86 through 92. The key signature remains two flats. The Soprano Flute (Sbfl.) part features a series of eighth and sixteenth notes, with a sharp sign on the first staff. The woodwind parts continue with their rhythmic patterns, featuring various slurs and ties. The Bass Flute part is written in the bass clef.

93

Sbfl.

Abfl.

Tbfl.

Bbfl.

100

Sbfl.

Abfl.

Tbfl.

Bbfl.

107

rit.

Sbfl.

Abfl.

Tbfl.

Bbfl.