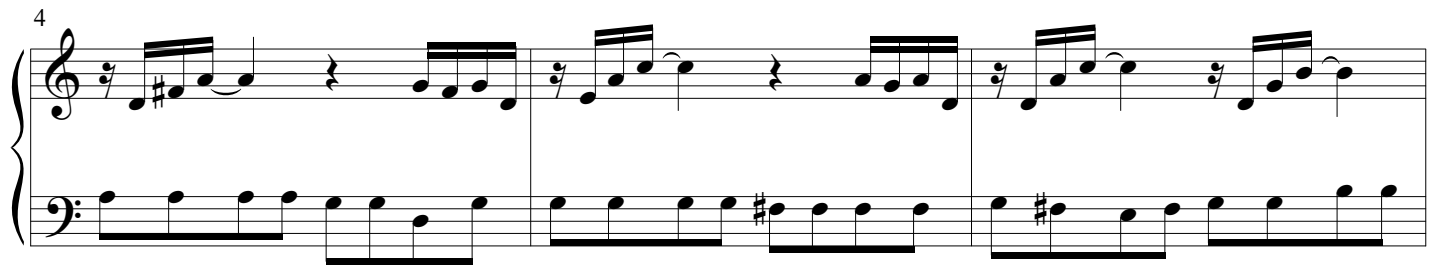
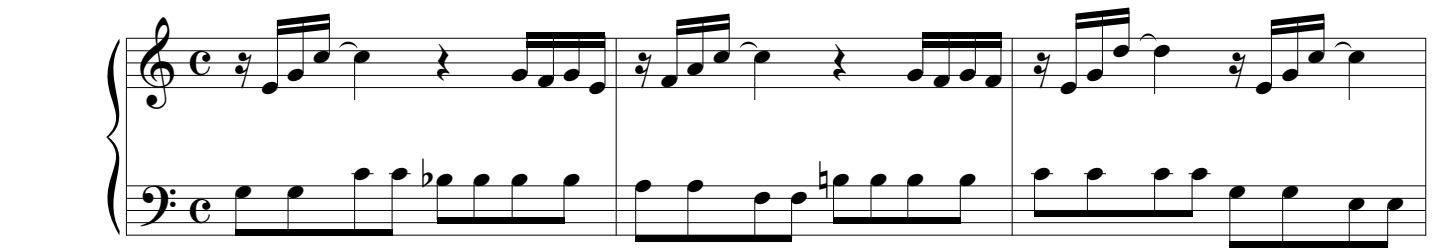


# Praeludium et Fuga III

BWV 872

J. SEBASTIAN BACH

ARR. PETER H. BESSELING



16

Measures 16-18 of the Praeludium et Fuga III - PIANO I. The music is in 3/4 time. The right hand features a melodic line with eighth and sixteenth notes, while the left hand provides a steady eighth-note accompaniment.

19

Measures 19-21 of the Praeludium et Fuga III - PIANO I. The right hand continues the melodic development with various intervals and rests, while the left hand maintains the eighth-note accompaniment.

22

Measures 22-24 of the Praeludium et Fuga III - PIANO I. The right hand shows more complex rhythmic patterns, including sixteenth-note runs. The left hand continues the eighth-note accompaniment.

25

Measures 25-33 of the Praeludium et Fuga III - PIANO I. The right hand features a series of sixteenth-note runs and rests, with some notes marked with accents. The left hand continues the eighth-note accompaniment.

34

Measures 34-41 of the Praeludium et Fuga III - PIANO I. The right hand continues the melodic development with various intervals and rests. The left hand continues the eighth-note accompaniment.

42

Measures 42-48 of the Praeludium et Fuga III - PIANO I. The right hand features a series of sixteenth-note runs and rests. The left hand continues the eighth-note accompaniment.

*Fuga*

48

4

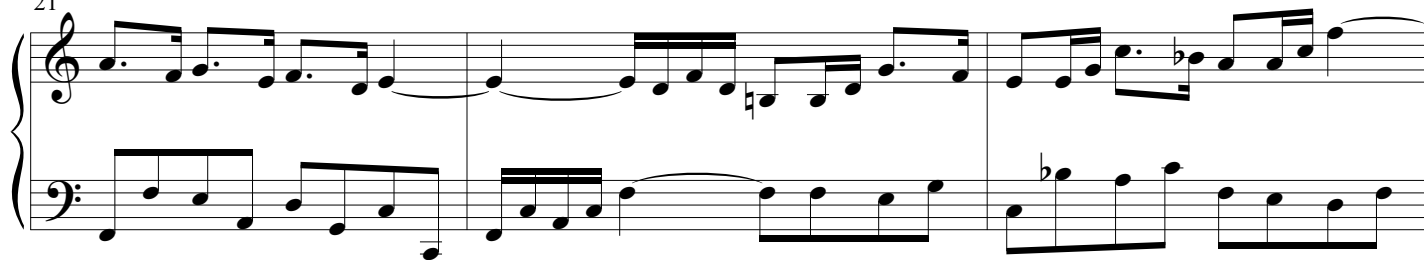
8

11

15

18

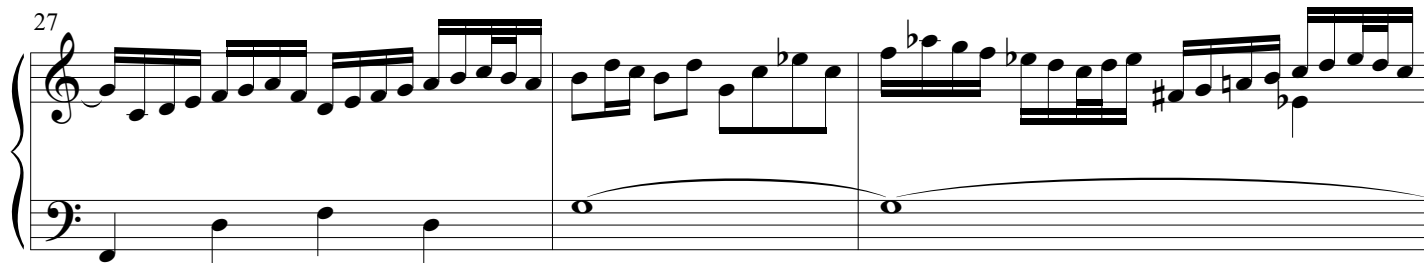
21



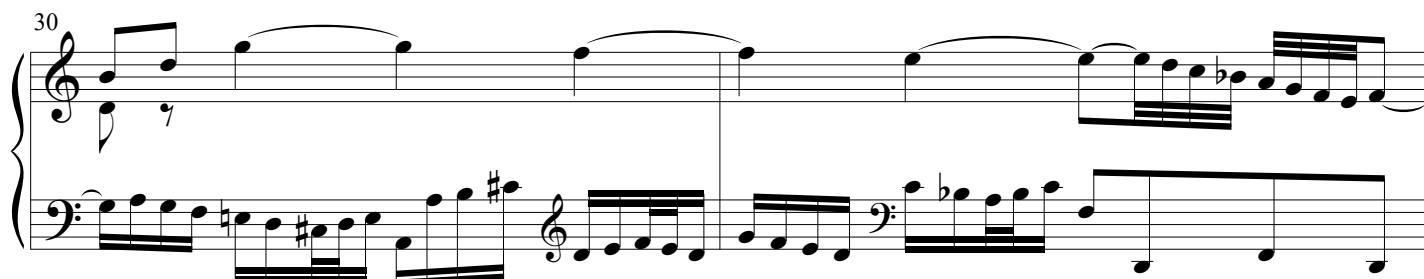
24



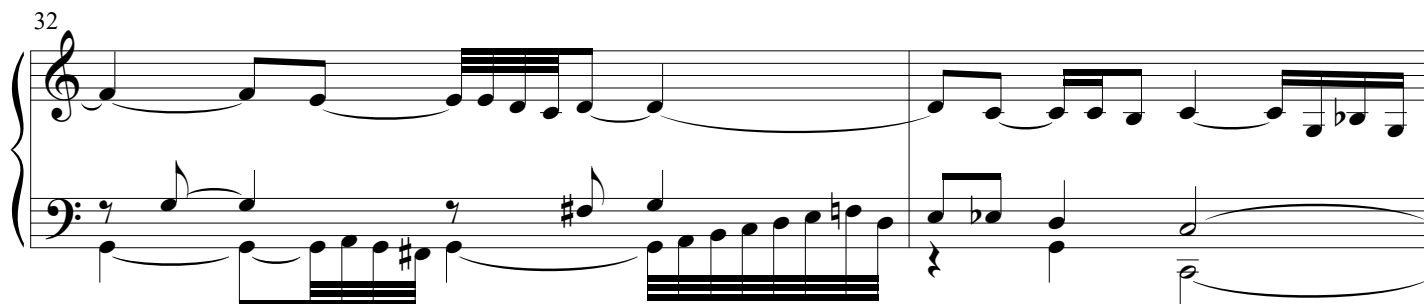
27



30



32



34

