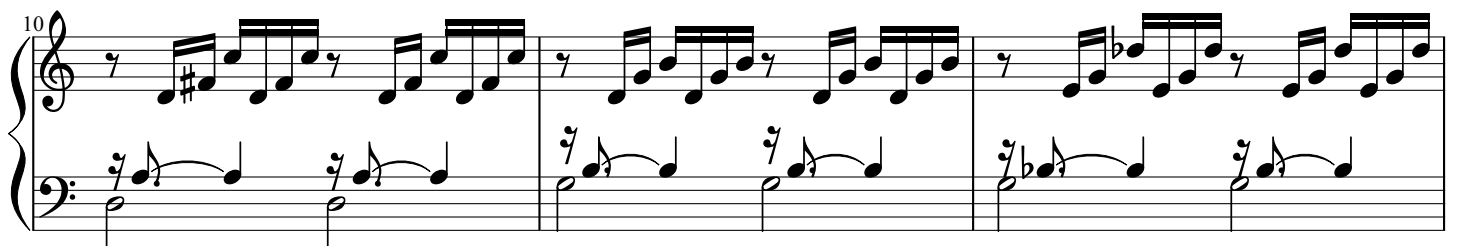
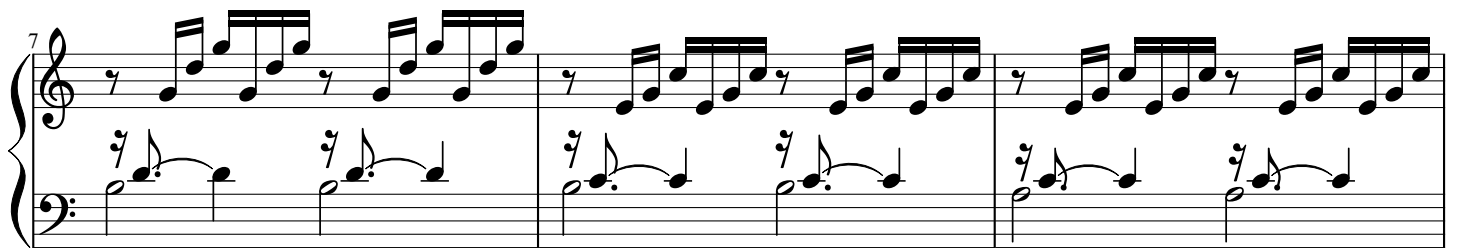
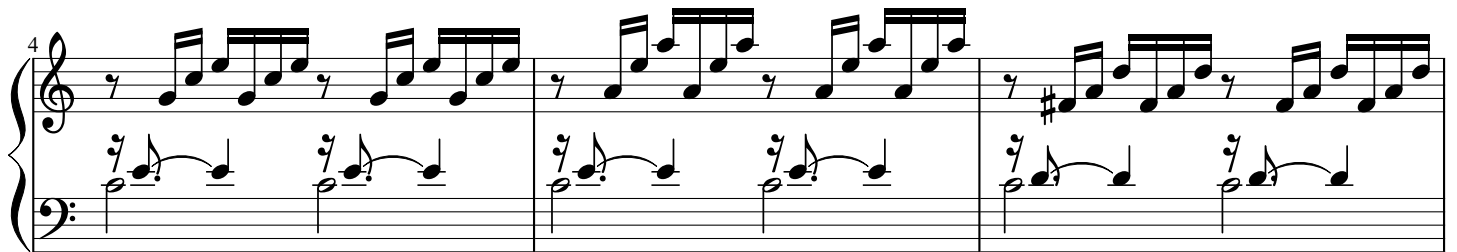


Johann Sebastian Bach

Prelude No 1 in C-major from WTK I

BWV 846



16

Measures 16-17. Treble clef: eighth notes with eighth-note rests. Bass clef: quarter notes with eighth-note rests.

18

Measures 18-19. Treble clef: eighth notes with eighth-note rests. Bass clef: quarter notes with eighth-note rests.

20

Measures 20-21. Treble clef: eighth notes with eighth-note rests. Bass clef: quarter notes with eighth-note rests.

22

Measures 22-23. Treble clef: eighth notes with eighth-note rests. Bass clef: quarter notes with eighth-note rests. Measure 22 has a sharp sign on the bass line.

24

4

Measures 24-25. Treble clef: eighth notes with eighth-note rests. Bass clef: quarter notes with eighth-note rests.

26

Measures 26-27. Treble clef: eighth-note patterns with rests. Bass clef: quarter notes with eighth-note rests.

28

Measures 28-29. Treble clef: eighth-note patterns with rests. Bass clef: quarter notes with eighth-note rests.

30

Measures 30-31. Treble clef: eighth-note patterns with rests. Bass clef: quarter notes with eighth-note rests.

32

Measures 32-33. Treble clef: eighth-note patterns with rests. Bass clef: quarter notes with eighth-note rests.

34

Measures 34-35. Treble clef: eighth-note patterns with rests. Bass clef: quarter notes with eighth-note rests.