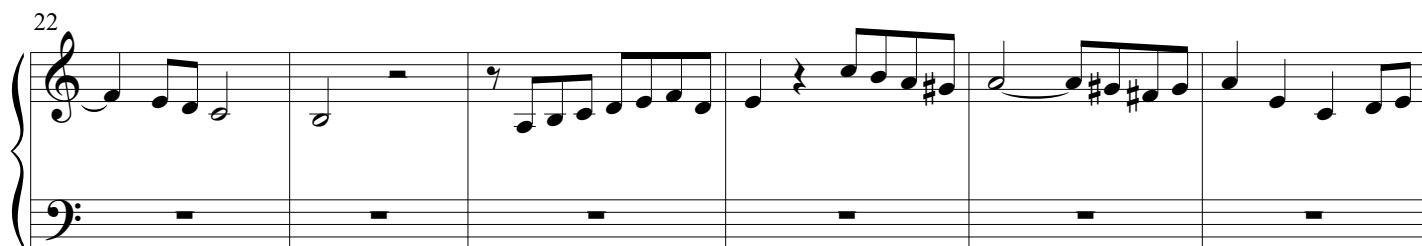
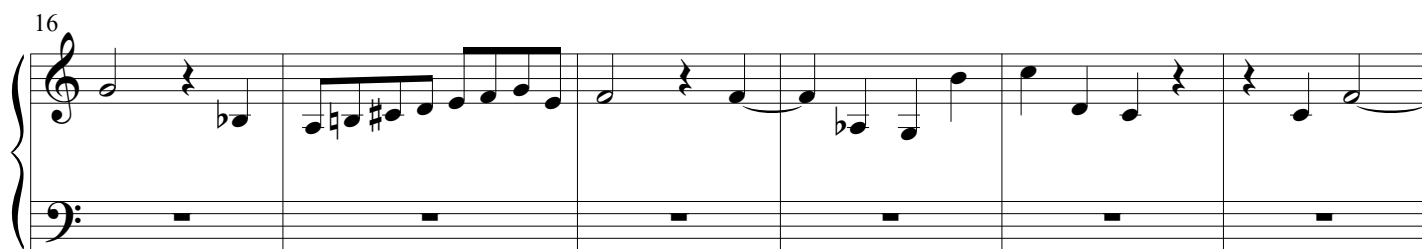
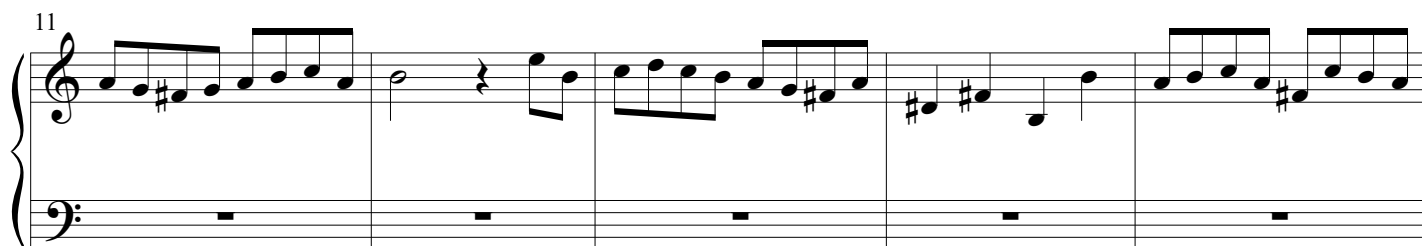
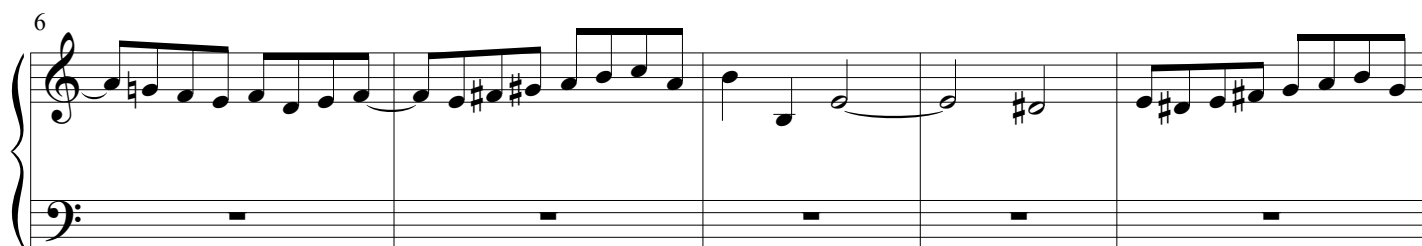
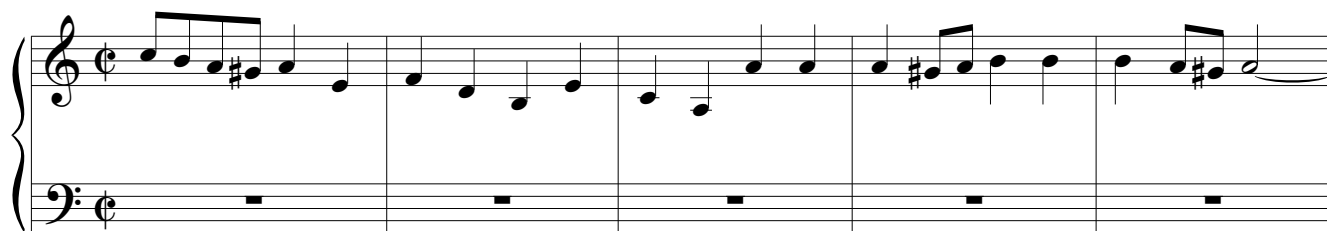


Piano II

Praeludium et Fuga XXII

BWV 891

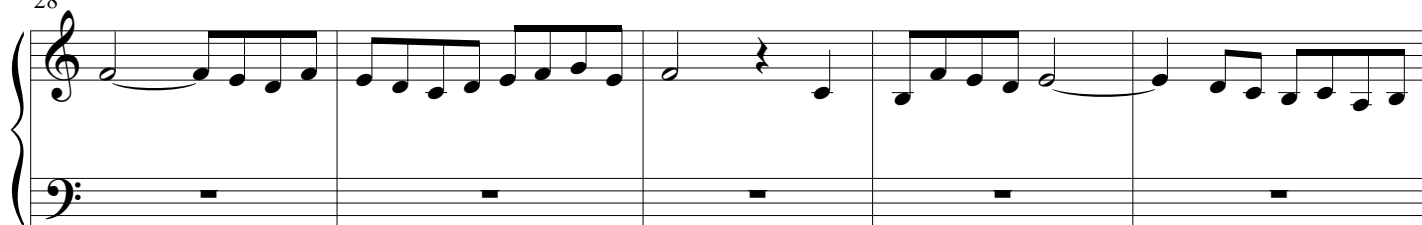
J. Sebastian Bach
Arr. Peter H. Besseling



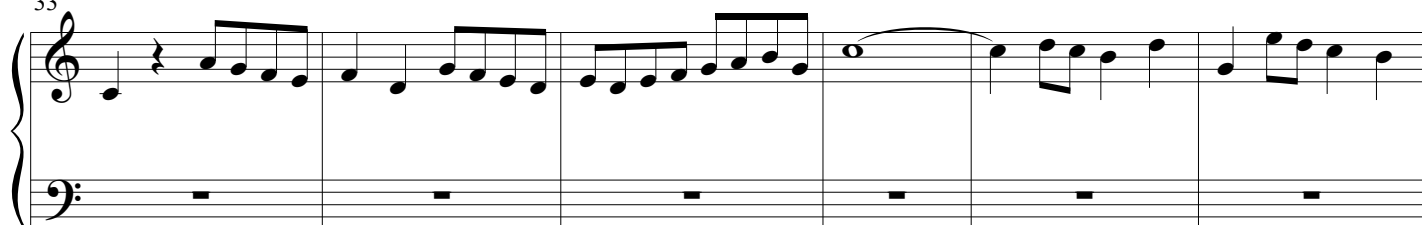
2

Praeludium et Fuga XXII - Piano II

28



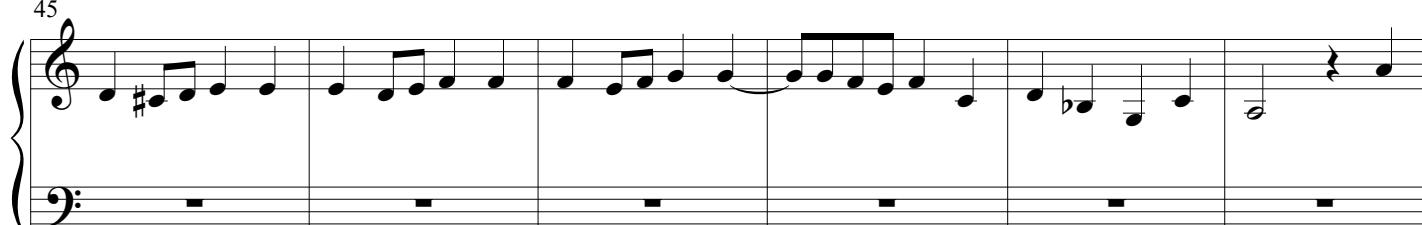
33



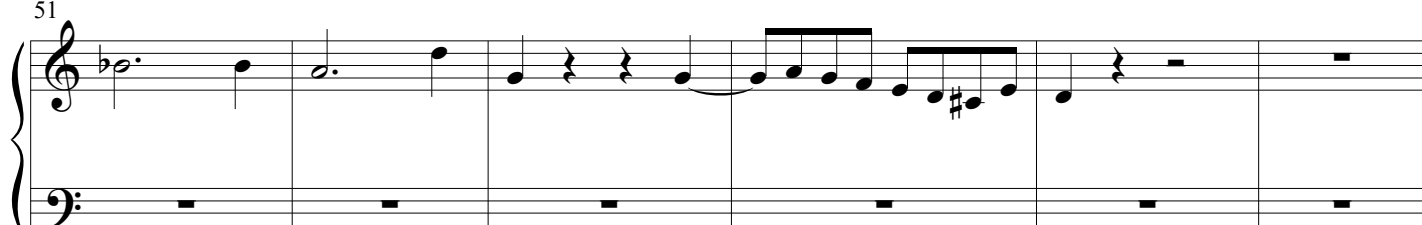
39



45



51



57



63

69

75

80

Fuga

5

4

Praeludium et Fuga XXII - Piano II

9



13



16



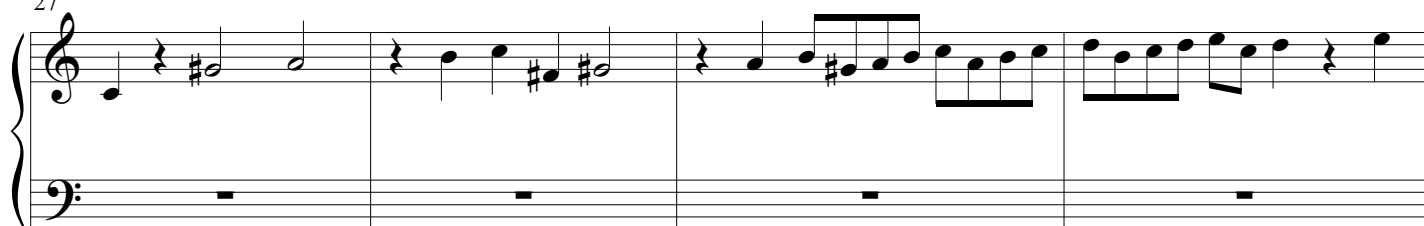
20



23



27



31

Measures 31-34. Treble clef: 31 (quarter, eighth, eighth, quarter, quarter, eighth, eighth), 32 (quarter, eighth, eighth, quarter, quarter, eighth, eighth), 33 (quarter, eighth, eighth, quarter, quarter, eighth, eighth), 34 (quarter, eighth, eighth, quarter, quarter, eighth, eighth). Bass clef: 31 (whole rest), 32 (whole rest), 33 (half note), 34 (quarter note).

35

Measures 35-37. Treble clef: 35 (half note), 36 (whole note), 37 (quarter note). Bass clef: 35 (quarter, eighth, eighth, quarter, quarter, eighth, eighth), 36 (quarter, eighth, eighth, quarter, quarter, eighth, eighth), 37 (quarter, eighth, eighth, quarter, quarter, eighth, eighth).

38

Measures 38-41. Treble clef: 38 (quarter note), 39 (half note), 40 (quarter note), 41 (quarter note). Bass clef: 38 (quarter, eighth, eighth, quarter, quarter, eighth, eighth), 39 (quarter, eighth, eighth, quarter, quarter, eighth, eighth), 40 (quarter, eighth, eighth, quarter, quarter, eighth, eighth), 41 (quarter, eighth, eighth, quarter, quarter, eighth, eighth).

42

Measures 42-45. Treble clef: 42 (quarter note), 43 (half note), 44 (quarter note), 45 (quarter note). Bass clef: 42 (quarter, eighth, eighth, quarter, quarter, eighth, eighth), 43 (quarter, eighth, eighth, quarter, quarter, eighth, eighth), 44 (quarter, eighth, eighth, quarter, quarter, eighth, eighth), 45 (quarter, eighth, eighth, quarter, quarter, eighth, eighth).

46

Measures 46-48. Treble clef: 46 (quarter note), 47 (half note), 48 (quarter note). Bass clef: 46 (quarter, eighth, eighth, quarter, quarter, eighth, eighth), 47 (quarter, eighth, eighth, quarter, quarter, eighth, eighth), 48 (quarter, eighth, eighth, quarter, quarter, eighth, eighth).

49

Measures 49-51. Treble clef: 49 (quarter note), 50 (half note), 51 (quarter note). Bass clef: 49 (quarter, eighth, eighth, quarter, quarter, eighth, eighth), 50 (quarter, eighth, eighth, quarter, quarter, eighth, eighth), 51 (quarter, eighth, eighth, quarter, quarter, eighth, eighth).

52

56

56

60

Musical score for 'The Rose Tree' (Measures 60-62). The score is written for piano (p) and features a treble and bass staff. The key signature is one flat (B-flat). The melody in the treble staff consists of quarter and eighth notes, with a slur over measures 61 and 62. The bass staff provides a rhythmic accompaniment with eighth and sixteenth notes, including a chromatic descending line in measure 62.

[illegible]

66

69

69

73

76

79

83

87

91

94



97

