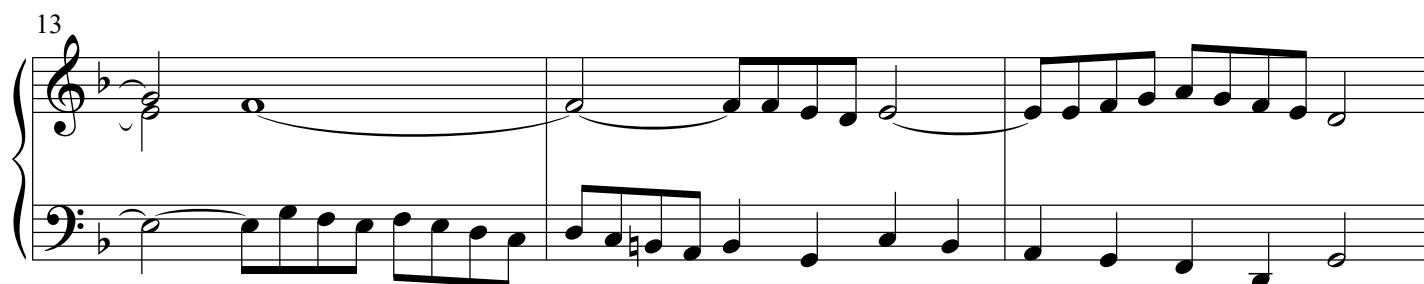
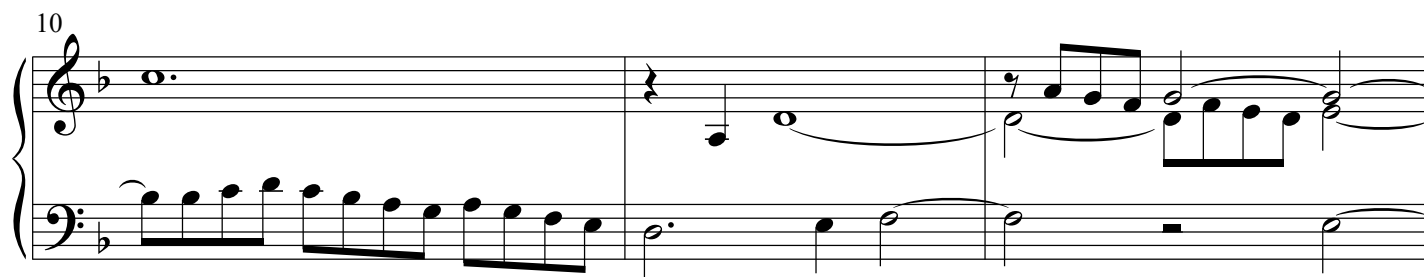
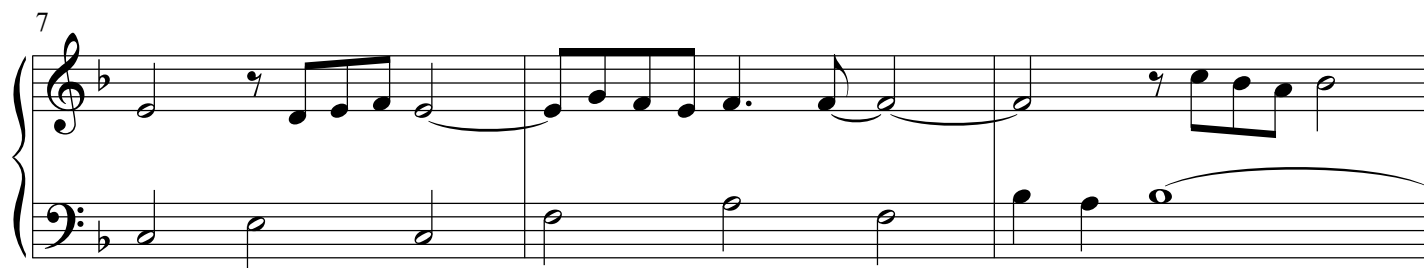
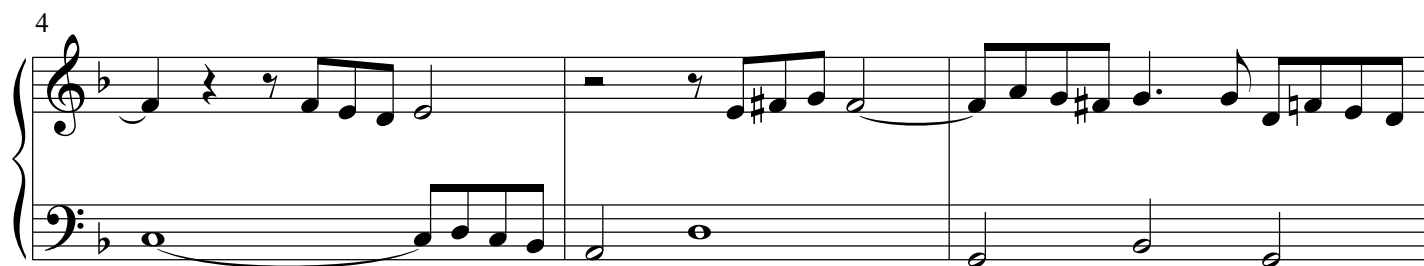
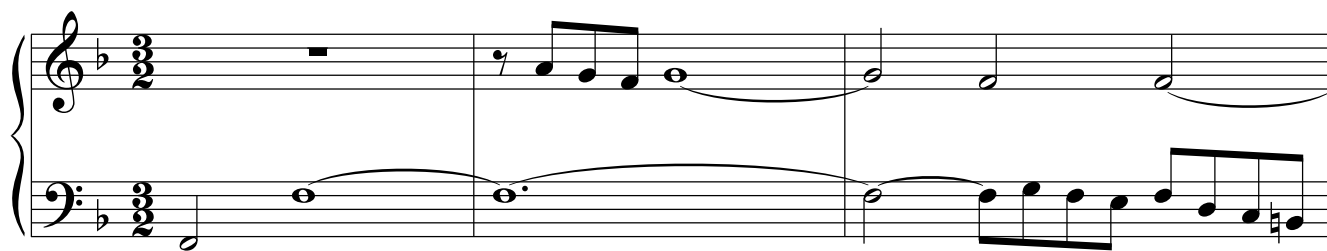


Praeludium et Fuga XI

BWV 880

J. SEBASTIAN BACH

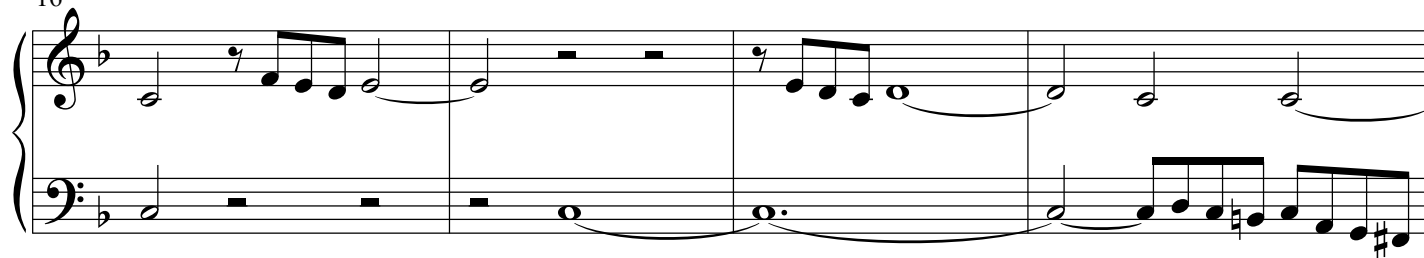
PETER H. BESSELING



2

Praeludium et Fuga XI - PIANO II

16



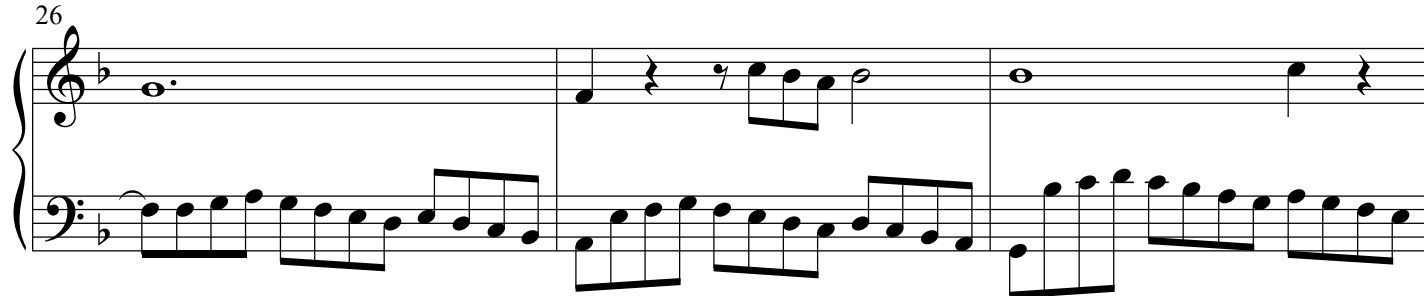
20



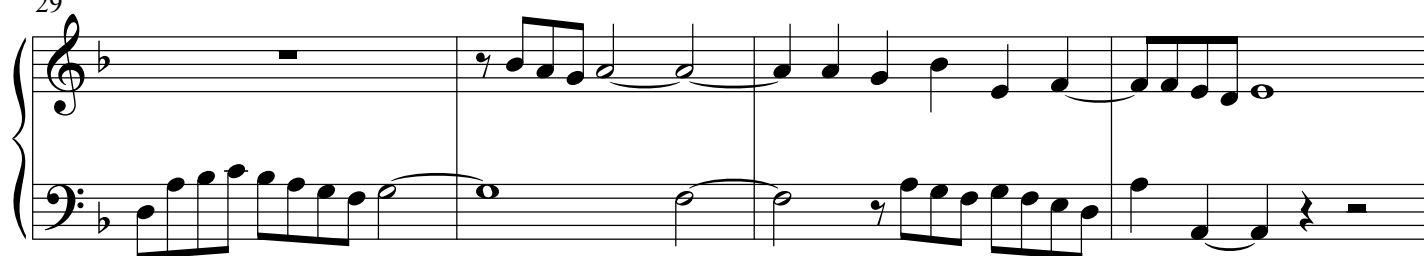
23



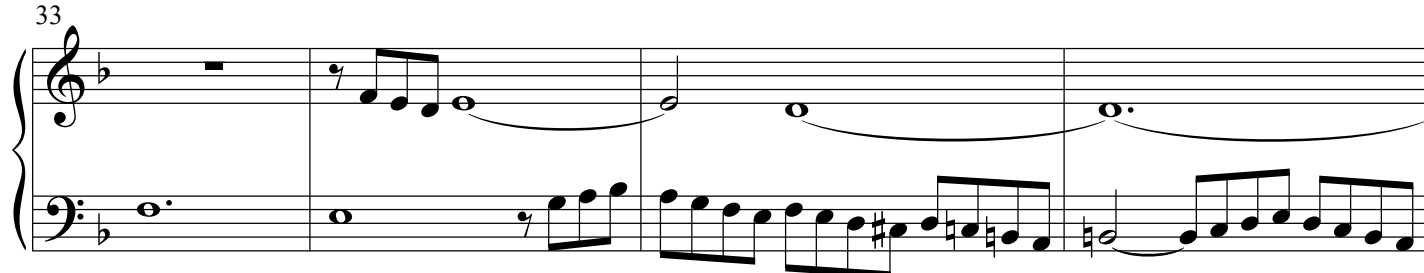
26



29



33



37

40

43

46

49

52

55

Measures 55-58 of the Praeludium. The music is in B-flat major (two flats) and 4/4 time. Measure 55 features a treble staff with a half note G4, a quarter note A4, a quarter note Bb4, and a half note C5, and a bass staff with a half note F3, a quarter note G2, a quarter note A2, and a half note Bb2. Measure 56 has a treble staff with a half note C5, a quarter note Bb4, a quarter note A4, and a half note G4, and a bass staff with a half note Bb2, a quarter note A2, a quarter note G2, and a half note F3. Measure 57 has a treble staff with a half note G4, a quarter note A4, a quarter note Bb4, and a half note C5, and a bass staff with a half note F3, a quarter note G2, a quarter note A2, and a half note Bb2. Measure 58 has a treble staff with a half note C5, a quarter note Bb4, a quarter note A4, and a half note G4, and a bass staff with a half note Bb2, a quarter note A2, a quarter note G2, and a half note F3.

59

Measures 59-61 of the Praeludium. Measure 59 has a treble staff with a half note G4, a quarter note A4, a quarter note Bb4, and a half note C5, and a bass staff with a half note F3, a quarter note G2, a quarter note A2, and a half note Bb2. Measure 60 has a treble staff with a half note C5, a quarter note Bb4, a quarter note A4, and a half note G4, and a bass staff with a half note Bb2, a quarter note A2, a quarter note G2, and a half note F3. Measure 61 has a treble staff with a half note G4, a quarter note A4, a quarter note Bb4, and a half note C5, and a bass staff with a half note F3, a quarter note G2, a quarter note A2, and a half note Bb2.

62

Measures 62-64 of the Praeludium. Measure 62 has a treble staff with a half note G4, a quarter note A4, a quarter note Bb4, and a half note C5, and a bass staff with a half note F3, a quarter note G2, a quarter note A2, and a half note Bb2. Measure 63 has a treble staff with a half note C5, a quarter note Bb4, a quarter note A4, and a half note G4, and a bass staff with a half note Bb2, a quarter note A2, a quarter note G2, and a half note F3. Measure 64 has a treble staff with a half note G4, a quarter note A4, a quarter note Bb4, and a half note C5, and a bass staff with a half note F3, a quarter note G2, a quarter note A2, and a half note Bb2.

65

Measures 65-68 of the Praeludium. Measure 65 has a treble staff with a half note G4, a quarter note A4, a quarter note Bb4, and a half note C5, and a bass staff with a half note F3, a quarter note G2, a quarter note A2, and a half note Bb2. Measure 66 has a treble staff with a half note C5, a quarter note Bb4, a quarter note A4, and a half note G4, and a bass staff with a half note Bb2, a quarter note A2, a quarter note G2, and a half note F3. Measure 67 has a treble staff with a half note G4, a quarter note A4, a quarter note Bb4, and a half note C5, and a bass staff with a half note F3, a quarter note G2, a quarter note A2, and a half note Bb2. Measure 68 has a treble staff with a half note C5, a quarter note Bb4, a quarter note A4, and a half note G4, and a bass staff with a half note Bb2, a quarter note A2, a quarter note G2, and a half note F3.

69

Measures 69-72 of the Praeludium. Measure 69 has a treble staff with a half note G4, a quarter note A4, a quarter note Bb4, and a half note C5, and a bass staff with a half note F3, a quarter note G2, a quarter note A2, and a half note Bb2. Measure 70 has a treble staff with a half note C5, a quarter note Bb4, a quarter note A4, and a half note G4, and a bass staff with a half note Bb2, a quarter note A2, a quarter note G2, and a half note F3. Measure 71 has a treble staff with a half note G4, a quarter note A4, a quarter note Bb4, and a half note C5, and a bass staff with a half note F3, a quarter note G2, a quarter note A2, and a half note Bb2. Measure 72 has a treble staff with a half note C5, a quarter note Bb4, a quarter note A4, and a half note G4, and a bass staff with a half note Bb2, a quarter note A2, a quarter note G2, and a half note F3.

Fuga

The beginning of the Fuga section. The treble staff has a 4-measure rest, followed by a half note G4, a quarter note A4, a quarter note Bb4, and a half note C5. The bass staff has a 4-measure rest, followed by a half note F3, a quarter note G2, a quarter note A2, and a half note Bb2. The time signature is 6/16.

10

Measures 10-15: The right hand plays a melodic line with eighth and sixteenth notes, while the left hand has whole rests.

16

Measures 16-21: Both hands play active lines. The right hand continues the melodic development, and the left hand provides a rhythmic accompaniment with eighth notes.

22

Measures 22-27: The right hand features a series of eighth-note patterns, and the left hand continues with a steady eighth-note accompaniment.

28

Measures 28-33: The right hand has a melodic line with some rests, while the left hand plays a continuous eighth-note accompaniment.

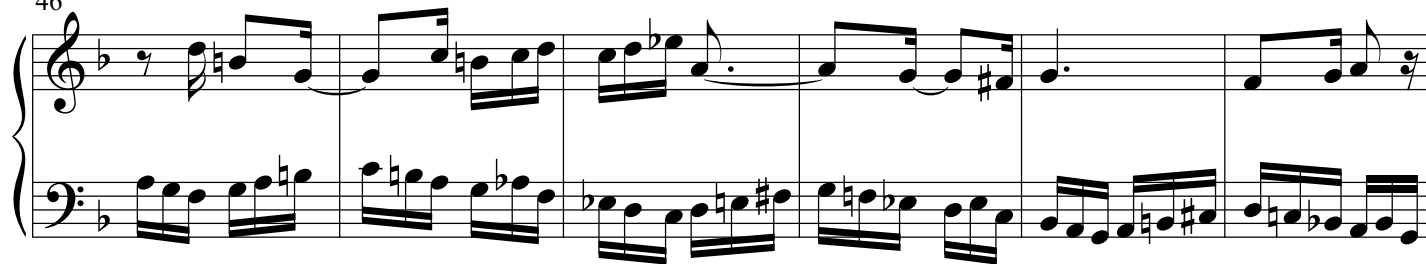
34

Measures 34-39: The right hand plays a melodic line with eighth notes, and the left hand continues with a steady eighth-note accompaniment.

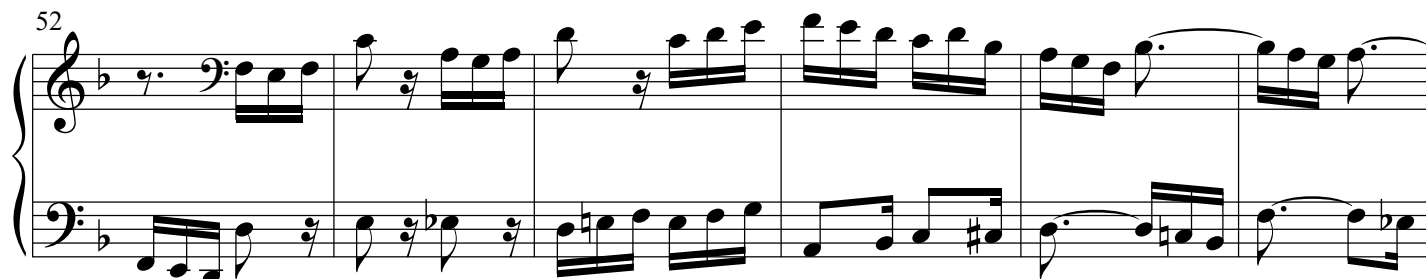
40

Measures 40-45: The right hand has a melodic line with eighth notes, and the left hand continues with a steady eighth-note accompaniment.

46



52



58



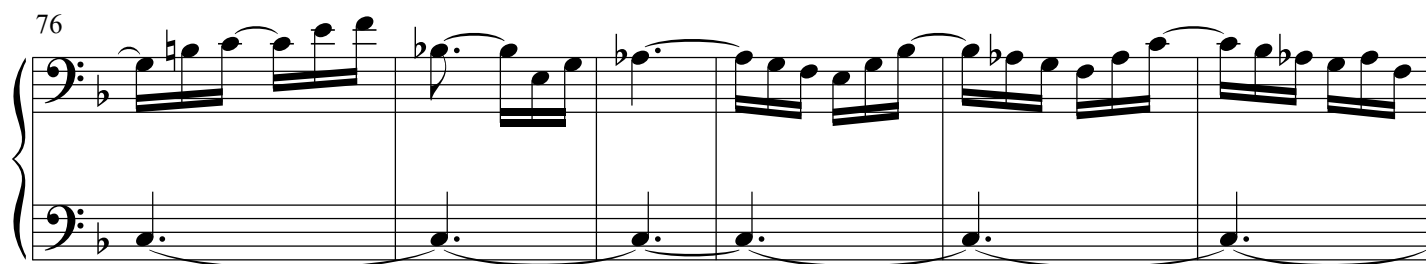
64



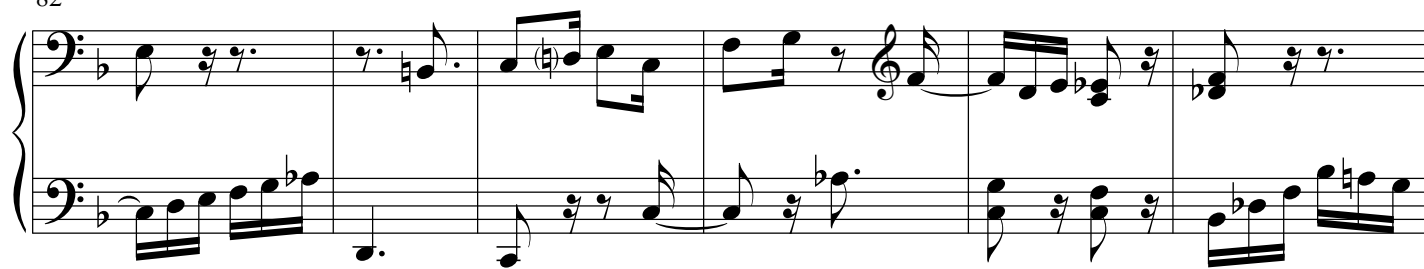
70



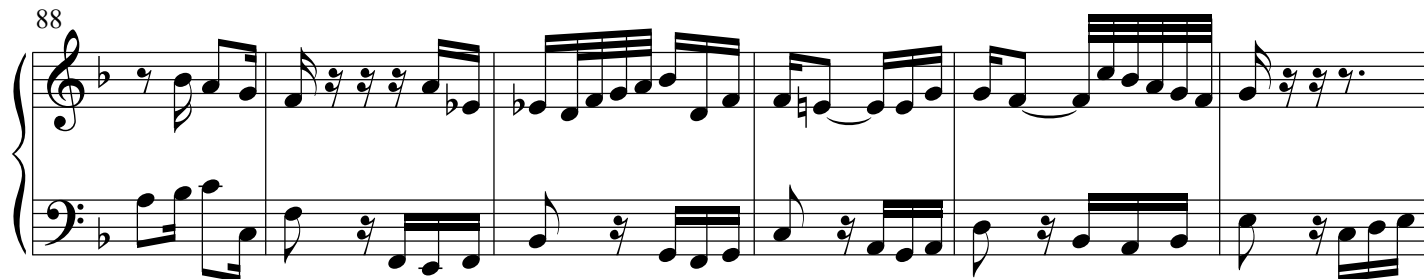
76



82



88



94

