

Clarinet in B \flat

Clarinet in A

Piano Concerto in G

I. Allegramente

Maurice Ravel

Allegramente $\text{♩} = 116$

Cl. in B \flat

15 **1**

mf

19

cresc.

24 **2** 10

f *ff*

3

f

41 **4** **Meno vivo** 8

f

5 11 **6** 12

f

7 9 **8** 12

f

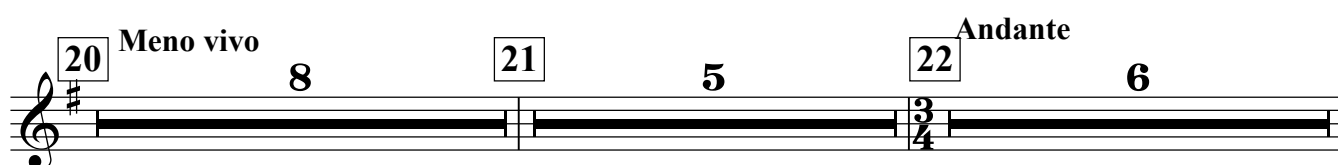
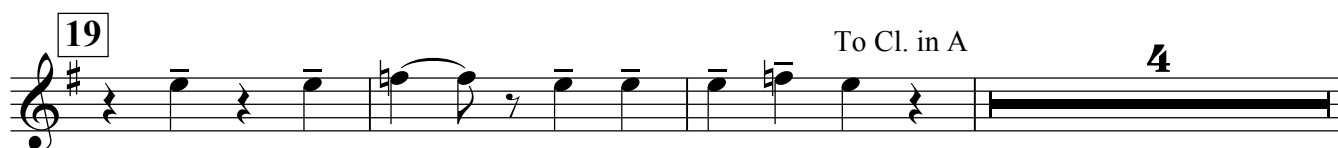
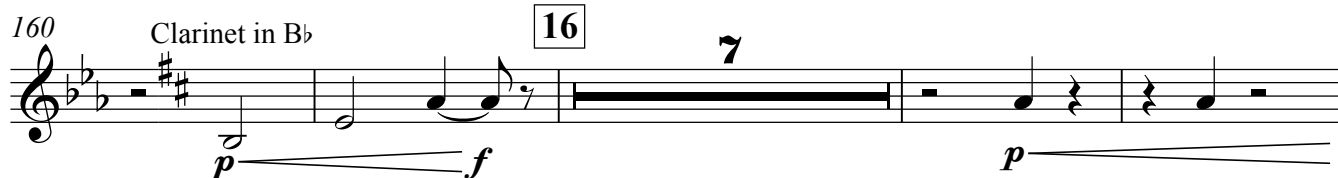
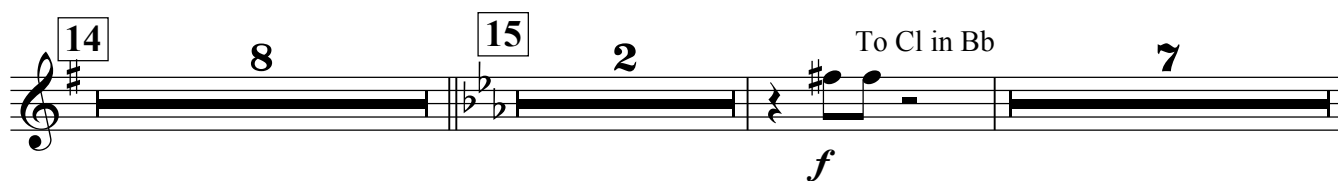
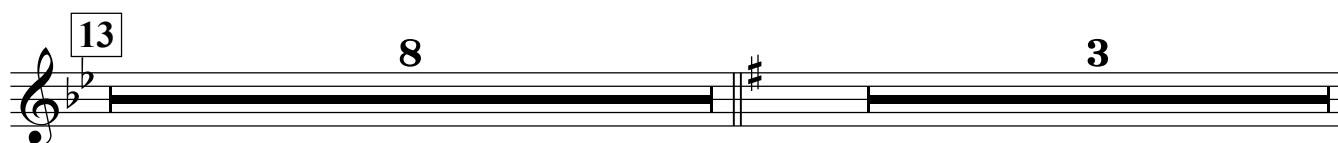
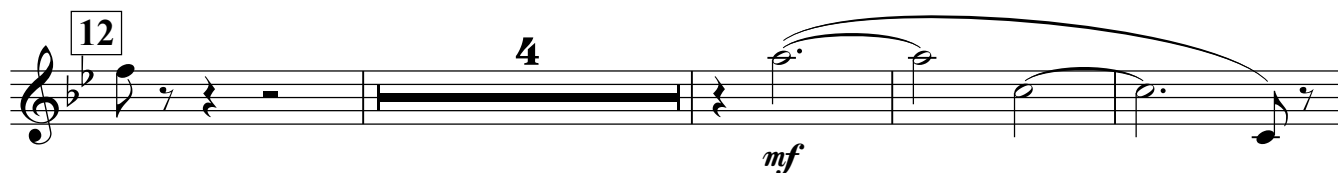
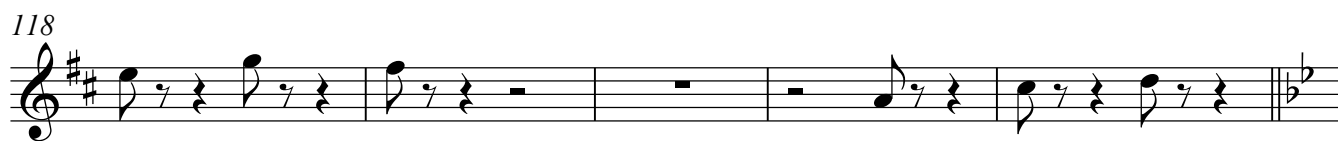
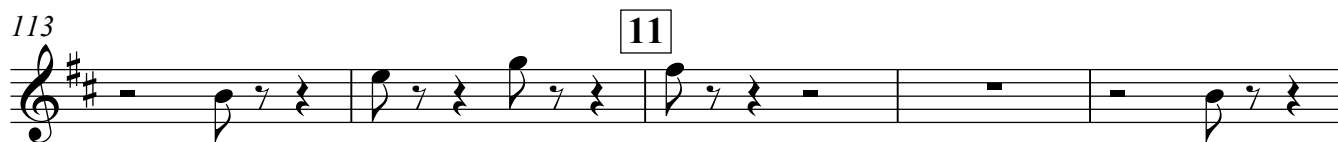
9 2

p

103 **10** **Tempo primo** $\text{♩} = 120$ 2

p

110



23 2 Clarinet in A

24 Tempo Primo $\text{♩} = 84$

f

25 Andante a piacere

p

228 To Cl. in B \flat

mf

26 15

27 4 3 Accelerando

29 Tempo Primo $\text{♩} = 120$

12 30 8

31 6 32 5 Clarinet in B \flat

p *f*

33 6 34

f

300

3

35 4

II. Adagio Assai

1 Adagio Assai $\text{♩} = 76$ 33

Clarinet in A solo

39

Pno.

50

pp

f

cresc.

6 9 7 7

8 6 9 6 10 5

III. Presto

I Presto ♩ = 160

16 1 8

2 12 3 9

4 5 *f*

5 5 *p*

6 9 *ff*

7 6 *f p f p f*

8 *ff*

9 *ff* 5

100

mf *f* *p* *f* *p* *f* *p* *f* *p*

10

mp

11

13

12

12

13

4

8

152

14

15

f

15

12

16

2

staccato

mf

188

17

2

f

196

18

5

mf

5

19

3

mf

20

5

4

f

Detailed description: This page of a musical score contains measures 100 through 200. It is written for Clarinet in B-flat and Clarinet in A. The score is in treble clef with a key signature of one sharp (F#). Measures 100-101 feature a melodic line with dynamics *mf*, *f*, *p*, *f*, *p*, *f*, and *p*. Measure 102 has a triplet of eighth notes. Measure 103 has a half note and a quarter note, with a *mp* dynamic. Measures 104-105 are whole rests. Measure 106 has a triplet of eighth notes. Measures 107-108 are whole rests. Measure 109 has a triplet of eighth notes. Measures 110-111 are whole rests. Measure 112 has a triplet of eighth notes. Measures 113-114 are whole rests. Measure 115 has a triplet of eighth notes. Measures 116-117 are whole rests. Measure 118 has a triplet of eighth notes. Measures 119-120 are whole rests. Measure 121 has a triplet of eighth notes. Measures 122-123 are whole rests. Measure 124 has a triplet of eighth notes. Measures 125-126 are whole rests. Measure 127 has a triplet of eighth notes. Measures 128-129 are whole rests. Measure 130 has a triplet of eighth notes. Measures 131-132 are whole rests. Measure 133 has a triplet of eighth notes. Measures 134-135 are whole rests. Measure 136 has a triplet of eighth notes. Measures 137-138 are whole rests. Measure 139 has a triplet of eighth notes. Measures 140-141 are whole rests. Measure 142 has a triplet of eighth notes. Measures 143-144 are whole rests. Measure 145 has a triplet of eighth notes. Measures 146-147 are whole rests. Measure 148 has a triplet of eighth notes. Measures 149-150 are whole rests. Measure 151 has a triplet of eighth notes. Measures 152-153 are whole rests. Measure 154 has a triplet of eighth notes. Measures 155-156 are whole rests. Measure 157 has a triplet of eighth notes. Measures 158-159 are whole rests. Measure 160 has a triplet of eighth notes. Measures 161-162 are whole rests. Measure 163 has a triplet of eighth notes. Measures 164-165 are whole rests. Measure 166 has a triplet of eighth notes. Measures 167-168 are whole rests. Measure 169 has a triplet of eighth notes. Measures 170-171 are whole rests. Measure 172 has a triplet of eighth notes. Measures 173-174 are whole rests. Measure 175 has a triplet of eighth notes. Measures 176-177 are whole rests. Measure 178 has a triplet of eighth notes. Measures 179-180 are whole rests. Measure 181 has a triplet of eighth notes. Measures 182-183 are whole rests. Measure 184 has a triplet of eighth notes. Measures 185-186 are whole rests. Measure 187 has a triplet of eighth notes. Measures 188-189 are whole rests. Measure 190 has a triplet of eighth notes. Measures 191-192 are whole rests. Measure 193 has a triplet of eighth notes. Measures 194-195 are whole rests. Measure 196 has a triplet of eighth notes. Measures 197-198 are whole rests. Measure 199 has a triplet of eighth notes. Measure 200 has a triplet of eighth notes.

