

Piano II

Praeludium et Fuga

BWV 852

J. Sebastian Bach

Arr. Peter H. Besseling

5

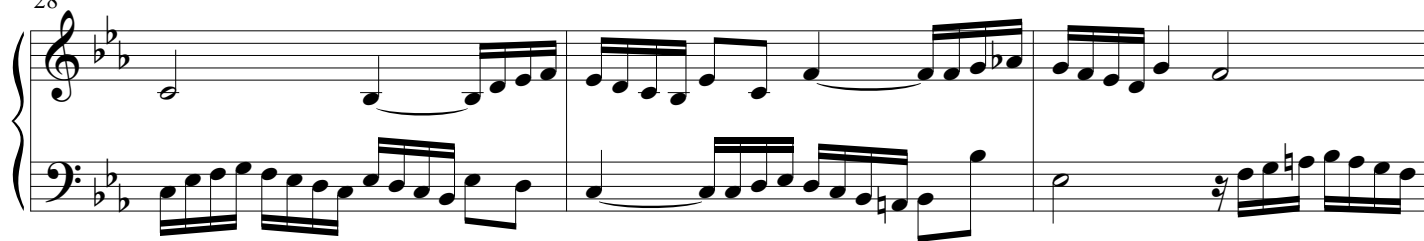
9

13

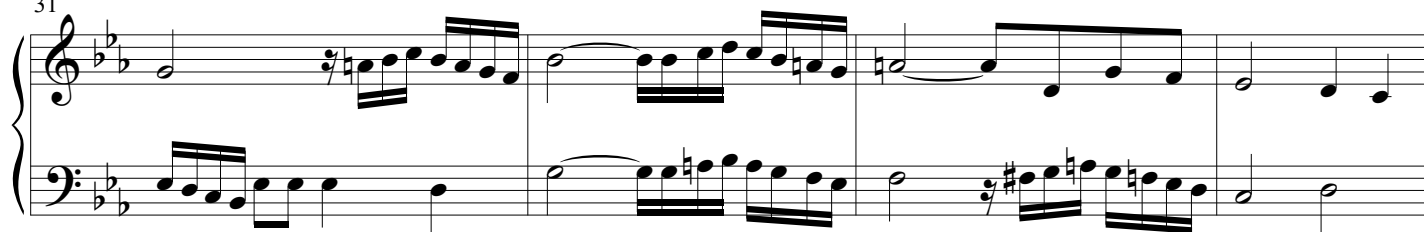
19

24

28



31



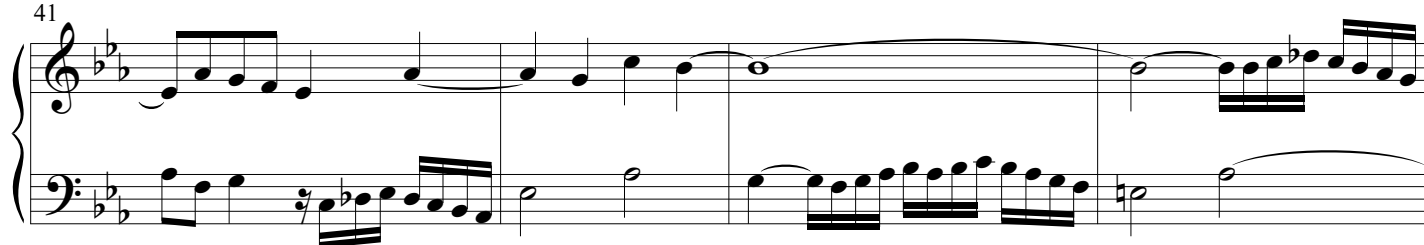
35



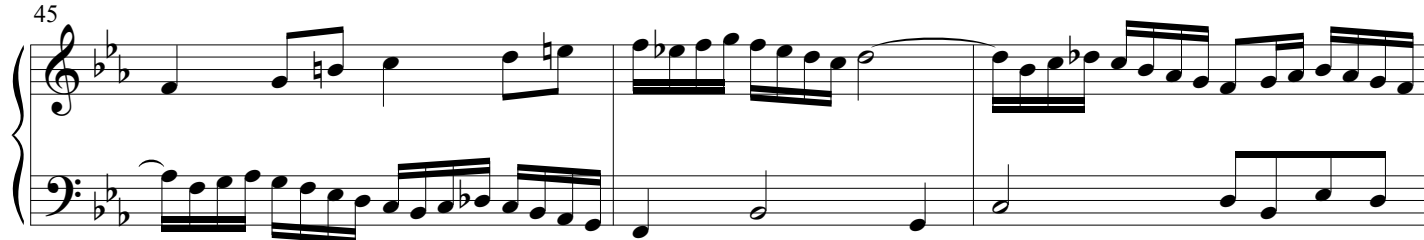
38



41



45



48

51

54

58

61

65

68

fuga

Measures 4-6 of the Fuga section. Measure 4 features a whole note chord in the treble and a whole note chord in the bass, both marked with a '2' indicating a second. Measure 5 shows a continuous eighth-note melody in the treble and a whole note in the bass. Measure 6 contains a trill in the treble and a whole note in the bass.

Measures 7-9 of the Fuga section. Measure 7 has a continuous eighth-note melody in the treble and a whole note in the bass. Measure 8 features a continuous eighth-note melody in the treble and a continuous eighth-note melody in the bass. Measure 9 shows a continuous eighth-note melody in the treble and a continuous eighth-note melody in the bass.

Measures 10-12 of the Fuga section. Measure 10 has a continuous eighth-note melody in the treble and a continuous eighth-note melody in the bass. Measure 11 features a continuous eighth-note melody in the treble and a continuous eighth-note melody in the bass. Measure 12 shows a continuous eighth-note melody in the treble and a continuous eighth-note melody in the bass.

Measures 13-15 of the Fuga section. Measure 13 has a continuous eighth-note melody in the treble and a continuous eighth-note melody in the bass. Measure 14 features a continuous eighth-note melody in the treble and a continuous eighth-note melody in the bass. Measure 15 shows a continuous eighth-note melody in the treble and a continuous eighth-note melody in the bass.

Measures 16-18 of the Fuga section. Measure 16 has a continuous eighth-note melody in the treble and a continuous eighth-note melody in the bass. Measure 17 features a continuous eighth-note melody in the treble and a continuous eighth-note melody in the bass. Measure 18 shows a continuous eighth-note melody in the treble and a continuous eighth-note melody in the bass.

Measures 19-21 of the Fuga section. Measure 19 has a continuous eighth-note melody in the treble and a continuous eighth-note melody in the bass. Measure 20 features a continuous eighth-note melody in the treble and a continuous eighth-note melody in the bass. Measure 21 shows a continuous eighth-note melody in the treble and a continuous eighth-note melody in the bass.

20

23

26

29

32

35