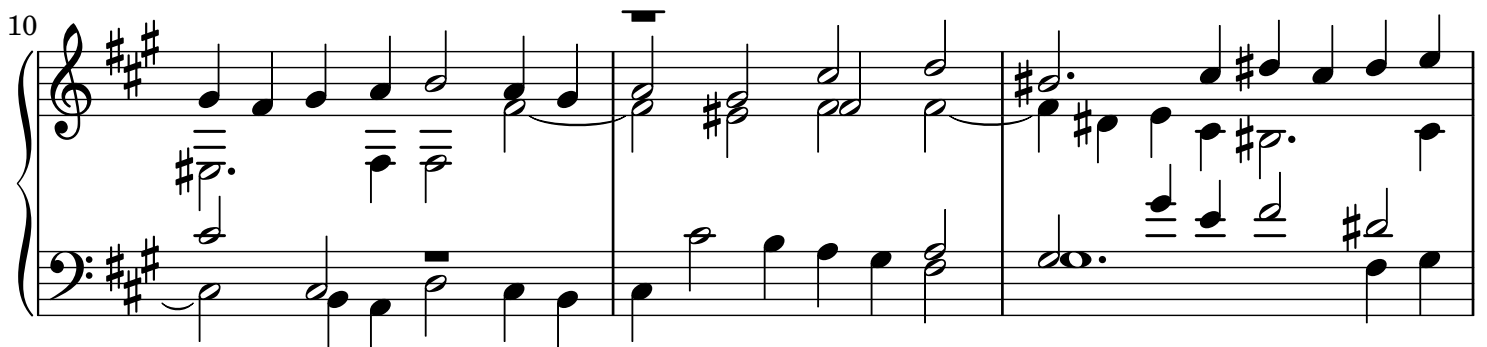
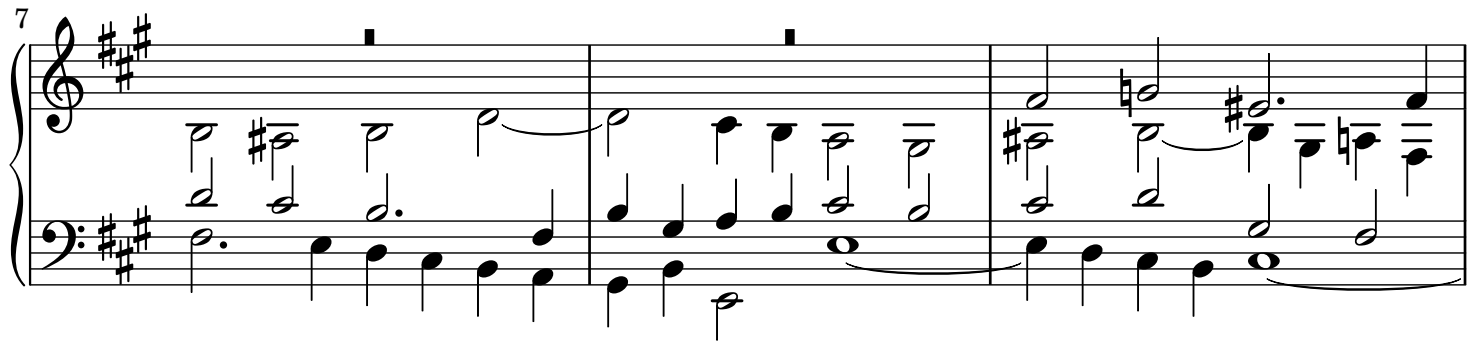
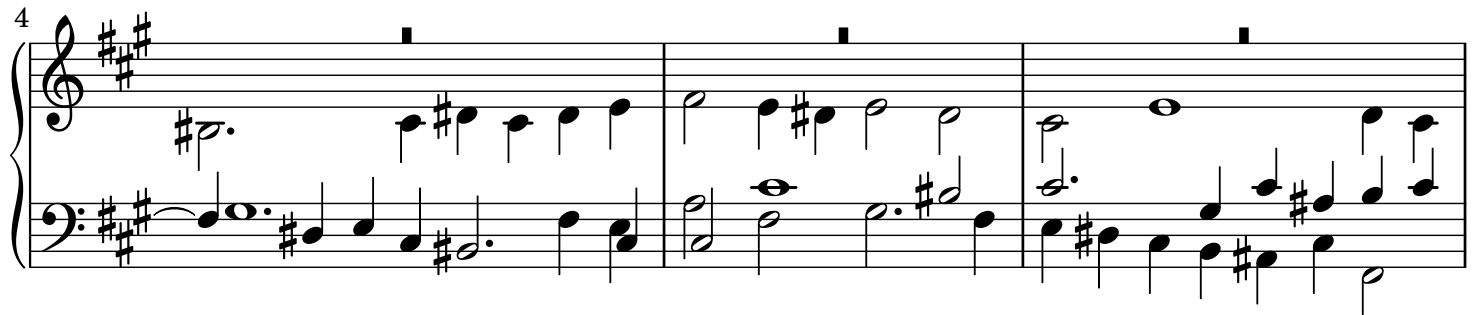
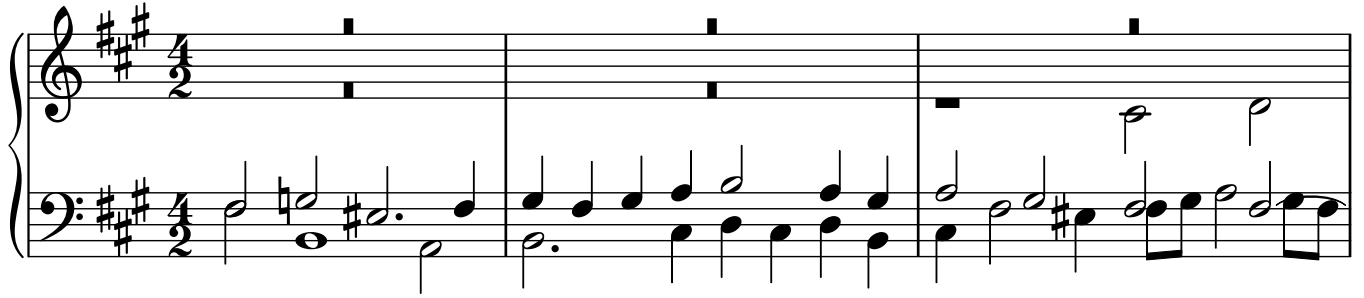


Kyrie Eleison II

J. S. Bach, BWV 232

Piano Transcription by Ruoshi Sun (2021)



13

Measures 13-15 of a musical score in A major (three sharps). The piece is in 4/4 time. Measure 13 features a treble staff with a half note A4, a quarter note B4, and a half note C#5, and a bass staff with a half note F#3, a quarter note G3, and a half note A3. Measure 14 has a treble staff with a half note D5, a quarter rest, and a half note E5, and a bass staff with a half note B2, a quarter note C3, and a half note D3. Measure 15 shows a treble staff with a half note F#5, a quarter note G5, and a half note A5, and a bass staff with a half note E3, a quarter note F#3, and a half note G3. A double bar line is at the end of measure 15.

16

Measures 16-18 of the musical score. Measure 16 has a treble staff with a half note B5, a quarter note C#6, and a half note D6, and a bass staff with a half note A2, a quarter note B2, and a half note C3. Measure 17 features a treble staff with a half note E6, a quarter note F#6, and a half note G6, and a bass staff with a half note D3, a quarter note E3, and a half note F#3. Measure 18 shows a treble staff with a half note A6, a quarter note B6, and a half note C7, and a bass staff with a half note G3, a quarter note A3, and a half note B3. A double bar line is at the end of measure 18.

19

Measures 19-22 of the musical score. Measure 19 has a treble staff with a half note D7, a quarter note E7, and a half note F#7, and a bass staff with a half note C4, a quarter note D4, and a half note E4. Measure 20 features a treble staff with a half note G7, a quarter note A7, and a half note B7, and a bass staff with a half note F#4, a quarter note G4, and a half note A4. Measure 21 shows a treble staff with a half note C8, a quarter note D8, and a half note E8, and a bass staff with a half note B4, a quarter note C5, and a half note D5. Measure 22 has a treble staff with a half note F#8, a quarter note G8, and a half note A8, and a bass staff with a half note C5, a quarter note D5, and a half note E5. A double bar line is at the end of measure 22.

23

Measures 23-25 of the musical score. Measure 23 has a treble staff with a half note B8, a quarter note C9, and a half note D9, and a bass staff with a half note F#5, a quarter note G5, and a half note A5. Measure 24 features a treble staff with a half note E9, a quarter note F#9, and a half note G9, and a bass staff with a half note B5, a quarter note C6, and a half note D6. Measure 25 shows a treble staff with a half note A9, a quarter note B9, and a half note C10, and a bass staff with a half note C6, a quarter note D6, and a half note E6. A double bar line is at the end of measure 25.

26

Measures 26-28 of the musical score. Measure 26 has a treble staff with a half note D10, a quarter note E10, and a half note F#10, and a bass staff with a half note F#6, a quarter note G6, and a half note A6. Measure 27 features a treble staff with a half note G10, a quarter note A10, and a half note B10, and a bass staff with a half note B6, a quarter note C7, and a half note D7. Measure 28 shows a treble staff with a half note C11, a quarter note D11, and a half note E11, and a bass staff with a half note C7, a quarter note D7, and a half note E7. A double bar line is at the end of measure 28.

29

Measures 29-31 of a musical score in A major (three sharps). The treble clef staff features a series of chords and a melodic line with a long note in measure 30. The bass clef staff provides a harmonic accompaniment with a steady eighth-note pattern in measures 29 and 30, followed by a change in measure 31.

32

Measures 32-34 of the musical score. Measure 32 shows a continuation of the harmonic pattern. Measures 33 and 34 introduce more complex melodic lines in the treble clef, including slurs and ties, while the bass clef maintains a consistent accompaniment.

35

Measures 35-37 of the musical score. Measure 35 features a prominent chord in the treble. Measures 36 and 37 show a progression of chords and melodic movement in both staves, with the bass clef providing a solid foundation.

38

Measures 38-40 of the musical score. Measure 38 has a long note in the treble. Measures 39 and 40 continue the melodic and harmonic development, with the bass clef featuring a more active line in measure 39.

41

Measures 41-43 of the musical score. Measure 41 shows a change in the bass line. Measures 42 and 43 conclude the section with a final chord in the treble and a sustained bass line.

44

Measures 44-46 of a musical score in A major (three sharps). The piece is in 4/4 time. Measure 44 features a treble staff with eighth-note chords and a bass staff with a single eighth note followed by a half note. Measure 45 has a treble staff with a half note and a bass staff with eighth-note chords. Measure 46 continues with eighth-note chords in both staves.

47

Measures 47-50 of the musical score. Measure 47 has a treble staff with eighth-note chords and a bass staff with eighth-note chords. Measure 48 features a treble staff with a half note and a bass staff with eighth-note chords. Measure 49 has a treble staff with a half note and a bass staff with eighth-note chords. Measure 50 continues with eighth-note chords in both staves.

51

Measures 51-53 of the musical score. Measure 51 has a treble staff with eighth-note chords and a bass staff with eighth-note chords. Measure 52 features a treble staff with a half note and a bass staff with eighth-note chords. Measure 53 continues with eighth-note chords in both staves.

54

Measures 54-56 of the musical score. Measure 54 has a treble staff with a half note and a bass staff with eighth-note chords. Measure 55 features a treble staff with a half note and a bass staff with eighth-note chords. Measure 56 continues with eighth-note chords in both staves.

57

Measures 57-59 of the musical score. Measure 57 has a treble staff with eighth-note chords and a bass staff with eighth-note chords. Measure 58 features a treble staff with a half note and a bass staff with eighth-note chords. Measure 59 concludes the piece with a treble staff ending on a half note and a bass staff ending on a half note, followed by a double bar line.