

Solo cello

dedicated to László G. Horváth, Rózsa Richárd
and the Anima Musicæ Chamber Orchestra

Concerto antico

for violin, cello and string orchestra

I

Tamás Beischer-Matyó

Vivace ♩ = 138

pp

Vln. I

8

5

13

Vla. harm.

p

(8)

25

p cantabile

32

mf

41

f

46

ff

50

appassionato

58

10

68

3

al niente

Copyright Tamás Beischer-Matyó, 2020

This work is licensed under the Creative Commons Attribution-NonCommercial-NoDerivatives 4.0 International License.
To view a copy of this license, visit <https://creativecommons.org/licenses/by-nc-nd/4.0/>

http://beisчерmatyo.hu/concerto_antico
bmt@beisчерmatyo.hu

74

rit. - - - **Allegro moderato** ♩ = 88

Vla., Vc., D. b.

S. vln.

ppp *mp* *mp grazioso*

79

mf

83

87

ff *mf dolce*

91

f

ff

97

ff

Vivo ♩ = 112

f risoluto

rit. *ff*

a tempo ♩ = 112 106

f

ff

rall. ♩ = 76 116

tr *mf*

rit. ♩ = 69 *tr* *ten.* *mp* *pp* *p* *p* *rall.*

125 *Adagio* ♩ = 63 *p espr.*

rall. ♩ = 60 *rall.* ♩ = 58 *ten.* *dolcissimo* *ten.* *rall.*

135 ♩ = 56 *ten.* *rall.* ♩ = 54 *pp* *rall.* ♩ = 52 *ppp*

139 *Vivace* ♩ = 138 *8* 147 *8*

Vln. I

157

f

f appassionato

162

171

180

188

195

ff

203

210

p

f \leq *ff*

marcato

tr.

ten.

f espr.

p

p

p

220

p

mf

rit. molto

f

228

(rit. molto)

a tempo ♩ = 138

ff

f

234

rall. ♩ = 88

a tempo ♩ = 138

p

appassionato

239

rall. ♩ = 88

pp

p espr.

♩ = 138

f

244

♩ = 88

♩ = 138

ff

con slancio

rall.

♩ = 88

energico

II

Con moto ♩ = 126

9 10 19 27 33 37 *rit.*

9 9 8 6 4 4

(rit.) a tempo ♩ = 138

43 47

Vln. I s. S. vln.

rall. molto - - - - *Un poco agitato*

ten. ten.

p

ten.

un poco tratt. ♩ = 112

56

2

a tempo ♩ = 138

61

mf *p* *mp* *giocos*

rall. - - - -

3

p

un poco tratt. ♩ = 112

68

rit. ♩ = 112

rit. - - ♩ = 112

S. vln.

mf *p* *mf* *p* *pp*

rit. - - **Con moto** ♩ = 126

77

mf *pp* *f* *espr.* *espr. molto*

82
rall. *un poco tratt.* ♩ = 112
p cantabile *pp* *rall. molto*

89
Un poco agitato ♩ = 138
ff *p* *mf*

100
f *espr.*

104
rall. molto *al* ♩ = 84 *un poco tratt.* ♩ = 112
ff *mf espr. molto*

110

rit. *a tempo*
col legno **114**
mf

120
ord. *f*

123
rit. **Appassionato** ♩ = 168
ff

Vln. I-II

131 *ff*

140 *appassionato*

144 *tratt.* ♩ = 152 *rit.* *a tempo* ♩ = 168

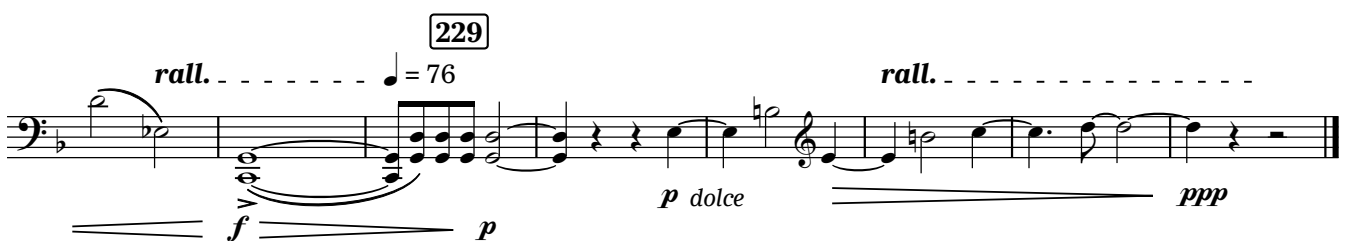
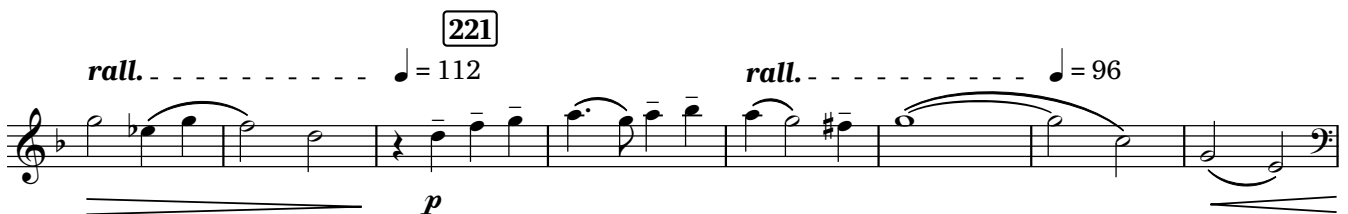
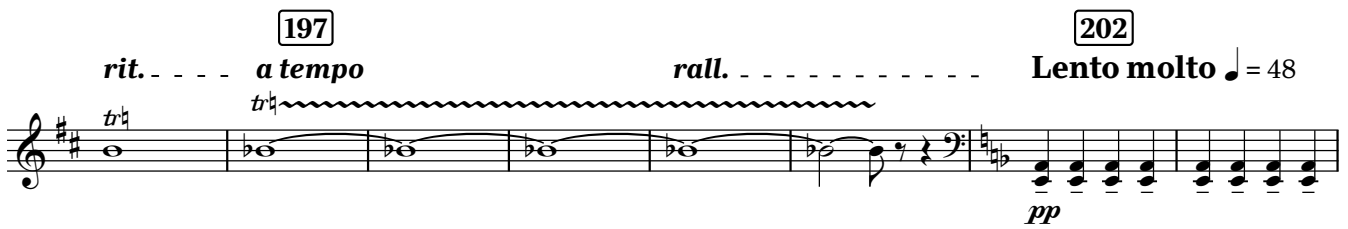
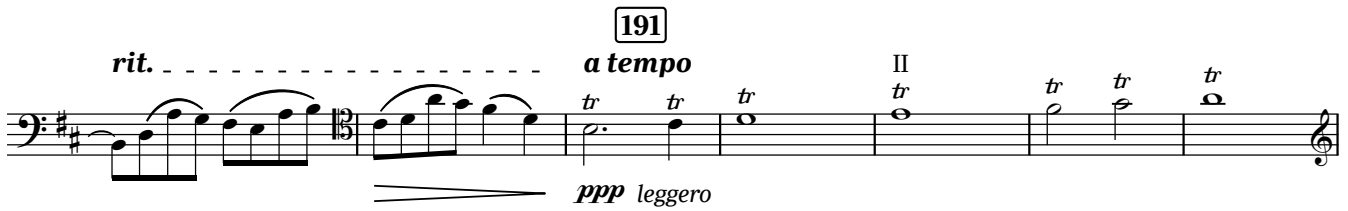
148

152

156 *ff* **160** *p* *mf*

168 *rall.* *al* ♩ = 84 *Con moto* ♩ = 126 *p* *espr.*

177 *p* S. vln.



Allegretto $\text{♩} = 88$ 8 16

Measures 57-58. Measure 57 contains a half note G3, a half note F#3, and a half note E3. Measure 58 contains a half note D3, a half note C3, and a half note B2. The piece ends with a double bar line.

66

approximate realization
in the tempo of orchestra:

♩ = 76 (only for solo cello)

pizz.

segue

ff

73

Meno mosso ♩ = 76

p dolce

84

92

arco

*mf**f cantabile**mf**f*

3

mf

102

*p**mf**f*

110

Allegretto ♩ = 88

4

115

8

123

Vln. I sul pont. trem. *pp*

S. vln. sul pont. *p*

sul pont. *p*

pizz.

133

Allegro vivace ♩ = 152

arco *ff* *f marcato*

138

mf

142

f

tr

146

153

pizz. *ff* *mf*

Vln. I 159

f *ff* *ff*

arco *ff*

167 *impetuoso* *ten.* *p*

173 S. vln. *p* *mp espr.*

182 188 S. vln. *p* *mp* *mf*

193 *p* *mf più espr.* *f* *mp*

199 S. vln. *f* *mf* *f appassionato* 206

213 217 *p*

Vln. I 221 *p* *mp* *ff*

225 233 Vln. I *tr* *7*

240

sfz sfz sfz sfz sfz sfz sfz sfz f

S. vln. 246

p

250

254

mf

258

f

262

ff

269

impetuoso

ten. ten.

275

poco rall. *Allegretto* $\text{♩} = 88$

sul pont. - - - > ord.

pp

281

mp dolce

289 *mf* *grazioso*

297 *f*

Vln. I 306 *f*

Vln. I pizz. *ff*

315 *un poco tratt.* ♩ = 76

320 *rit.* ----- *accel.* ----- *a tempo* ♩ = 88 *sfz*

325 *arco* *f* *tr* ----- *p* *rit.* -----

329 *arco* *f* *tempo* *pizz.* *p* ----- *f*

337 *arco* *f* ----- *mf*

poco rit. ----- *p* ----- *ppp*