

Solo cello

dedicated to László G. Horváth, Rózsa Richárd
and the Anima Musicæ Chamber Orchestra

Concerto antico

for violin, cello and string orchestra

I

Tamás Beischer-Matyó

Vivace ♩ = 138

pp

Vln. I

8

5

13

Vla. harm.

p

(8)

25

p cantabile

32

mf

41

f

46

ff

50

appassionato

58

10

68

3

al niente

Copyright Tamás Beischer-Matyó, 2020

This work is licensed under the Creative Commons Attribution-NonCommercial-NoDerivatives 4.0 International License.
To view a copy of this license, visit <https://creativecommons.org/licenses/by-nc-nd/4.0/>

http://beischermatyó.hu/concerto_antico
bmt@beischermatyó.hu

74

rit. - - - **Allegro moderato** ♩ = 88

Vla., Vc., D. b.

S. vln.

mp *mp grazioso*

79

mf

83

ff

87

mf dolce

91

f

ff

97

ff

Vivo ♩ = 112

f risoluto

rit. - - - - - *ff*

a tempo ♩ = 112 106

f

ff

111

rall. ♩ = 76 116

tr *mf*

rit. ♩ = 69 *tr* *ten.* *mp* *pp* *p* *p* *rall.*

125 *Adagio* ♩ = 63 *p espr.*

rall. ♩ = 60 *rall.* ♩ = 58 *ten.* *ten.* *rall.*

129 *dolcissimo*

ten. ♩ = 56 *rall.* ♩ = 54 *rall.* ♩ = 52 *pp* *ppp*

139 *Vivace* ♩ = 138 *8* 147 *8*

Vln. I

157

f

f appassionato

162

171

180

188

195

ff

203

210

p

f \leq *ff*

marcato

tr.

ten.

f espr.

p

p

p

220

p

mf

rit. molto

f

228

(rit. molto) *ff* *a tempo* ♩ = 138

f

234

rall. ♩ = 88 *a tempo* ♩ = 138

passionato *p*

239

rall. ♩ = 88 *pp* *p espr.* ♩ = 138 *f*

244

♩ = 88 ♩ = 138 *ff* *con slancio*

rall. ♩ = 88 *energico*

II

Con moto ♩ = 126

9 10 19 27 33 37 *rit.*

9 9 8 6 4 4

(*rit.*) **a tempo** ♩ = 138

Vln. I s. 43

rall. molto **Un poco agitato** ♩ = 138

S. vln. 47

ten. ten.

p

ten.

un poco tratt. ♩ = 112

56

2

a tempo ♩ = 138

61

mf

p

mp *giocos*

rall.

3

p

68

un poco tratt. ♩ = 112

rit. ♩ = 112

S. vln.

mf

p

mf

p

pp

77

rit. . . . **Con moto** ♩ = 126

mf

pp

f *espr.*

espr. molto

82
rall. *un poco tratt.* ♩ = 112
p cantabile *pp* *rall. molto*

89
Un poco agitato ♩ = 138
ff *p* *mf*

100
f *espr.*

104
rall. molto *al* ♩ = 84 *un poco tratt.* ♩ = 112
ff *mf espr. molto*

110

rit. *a tempo*
col legno **114**
mf

120
ord. *f*

123
rit. **Appassionato** ♩ = 168
ff

Vln. I-II

131

ff

140

appassionato

144

tratt. ♩ = 152 *rit.* *a tempo* ♩ = 168

148

152

156

ff

160

p

mf

168

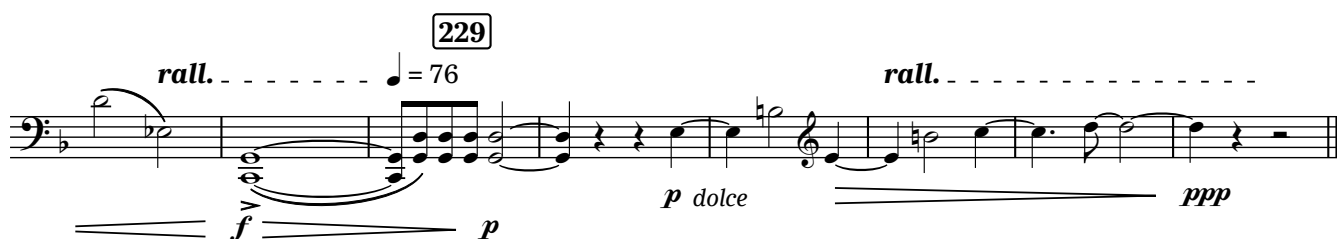
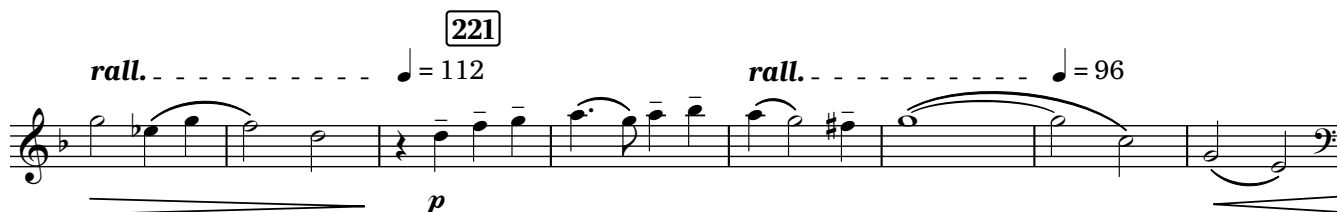
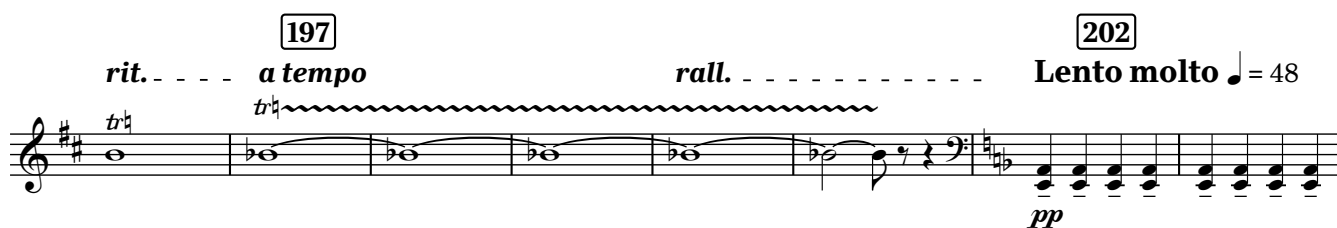
rall. *al* ♩ = 84 **Con moto** ♩ = 126

p *espr.*

177

S. vln.

p



Allegretto $\text{♩} = 88$ 8 16

The musical score for the ending of 'The Rose Tree' is written in 3/4 time on a single staff. The key signature has three sharps (F#, C#, G#). The melody consists of eighth and sixteenth notes, with some measures containing beamed sixteenth notes. The piece concludes with a final measure containing a whole note G#4 and a fermata. A box containing the number '57' is placed above the final measure. The word 'fff' (fortississimo) is written below the staff at the end.

66

approximate realization
in the tempo of orchestra:

♩ = 76 (only for solo cello)

pizz.

segue

ff

73

Meno mosso ♩ = 76

p dolce

84

92

arco

*mf**f cantabile**mf**f*

3

mf

102

*p**mf**f*

110

Allegretto ♩ = 88

4

115

8

123

Vln. I sul pont. trem. *pp*

S. vln. sul pont. *p*

sul pont. *p*

pizz.

133

Allegro vivace ♩ = 152

arco *ff* *f marcato*

138

mf

142

f

tr

146

153

pizz. *ff* *mf*

Vln. I 159

f *ff* *ff*

arco *ff*

167 *impetuoso* *ten.* *p*

173 S. vln. *p* *espr.* *mp*

182 188 S. vln. *p* *mp* *mf*

193 *p* *mf più espr.* *f* *mp*

199 S. vln. *f* *mf* *f appassionato* 206

213 217 *p*

Vln. I 221 *p* *mp* *ff*

225 233 Vln. I *tr* *7*

240 *ffz* *ffz* *ffz* *ffz* *ffz* *ffz* *ffz* *ffz* *f*

246 S. vln. *p*

250

254 *mf* *f* 258

262 *ff*

269 *impetuoso*

275 *poco rall.* *Allegretto* $\text{♩} = 88$
sul pont. - - - > ord. *pp*

281 *mp dolce*

289 *mf* *grazioso*

297 *f*

Vln. I 306 *f*

Vln. I pizz.

315 *un poco tratt.* ♩ = 76

320 *rit.* ----- *accel.* ----- *a tempo* ♩ = 88 *sfz*

325 *arco* *f* *tr* ----- *p* *rit.* -----

329 *f* *arco* *a tempo* *pizz.* *p* ----- *f*

337 *f* *arco* ----- *mf*

poco rit. ----- *p* ----- *ppp*