

Solo cello

dedicated to László G. Horváth, Richárd Rózsa
and the Anima Musicæ Chamber Orchestra

Concerto antico

for violin, cello and string orchestra

I

Tamás Beischer-Matyó

Vivace ♩ = 138

Vln. I
pp

Vla. harm.
p

(8)
p cantabile

mf

f

ff

II 3
appassionato

al niente

Copyright Tamás Beischer-Matyó, 2020

This work is licensed under the Creative Commons Attribution-NonCommercial-NoDerivatives 4.0 International License.
To view a copy of this license, visit <https://creativecommons.org/licenses/by-nc-nd/4.0/>

http://beischermatyó.hu/concerto_antico
bmt@beischermatyó.hu

74

rit. - - - **Allegro moderato** ♩ = 88

Vla., Vc., D. b.

S. vln.

mp *mp grazioso*

79

mf

83

ff

87

mf dolce

91

f

ff

97

ff

Vivo ♩ = 112

f risoluto

rit. *ff*

a tempo ♩ = 112 106

f

ff

111

rall. ♩ = 76 116

tr *ten.* *ff* *mf*

rit. ♩ = 69 *tr* *ten.* *mp* *pp* *p* *p* *rall.*

125 *Adagio* ♩ = 63 *p espr.*

rall. ♩ = 60 *rall.* ♩ = 58 *ten.* *ten.* *rall.*

129 *dolcissimo*

ten. ♩ = 56 *rall.* ♩ = 54 *rall.* ♩ = 52 *pp* *ppp*

135 139 *Vivace* ♩ = 138 147 *8* *8*

Vln. I

157

f

f appassionato

162

171

180

188

195

ff

203

210

p

f \leq *ff*

marcato

tr.

ten.

f espr.

p

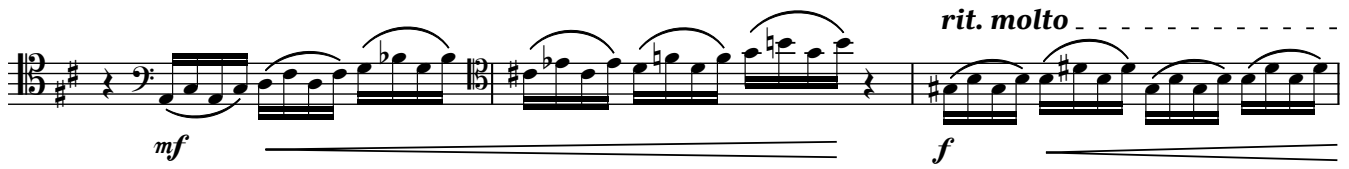
p

p

220



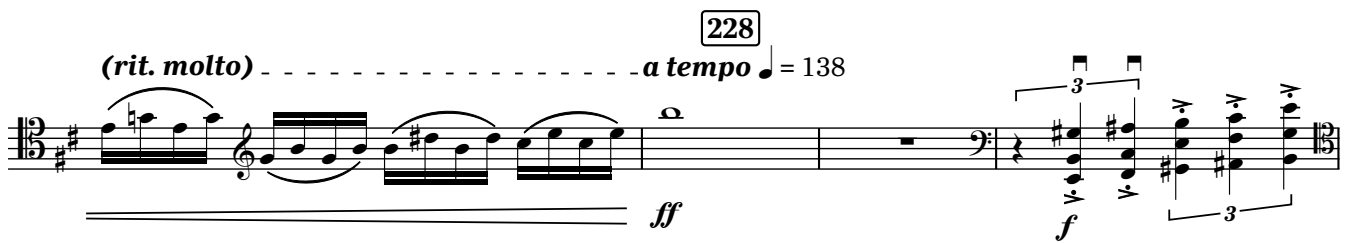
p



mf *rit. molto* *f*

228

(rit. molto) *a tempo* ♩ = 138



ff *f*

234

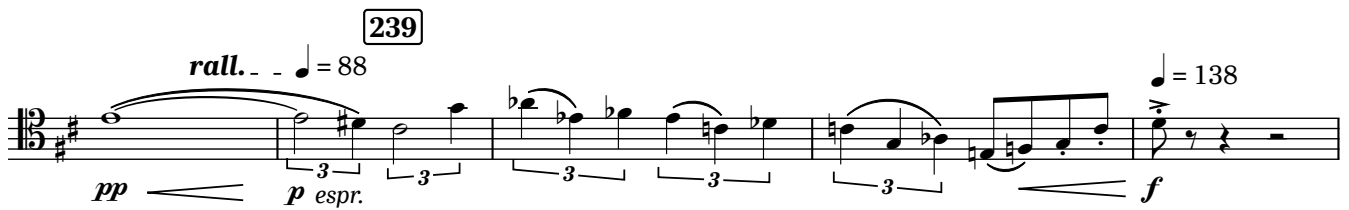
rall. ♩ = 88 *a tempo* ♩ = 138



appassionato *p*

239

rall. ♩ = 88 ♩ = 138



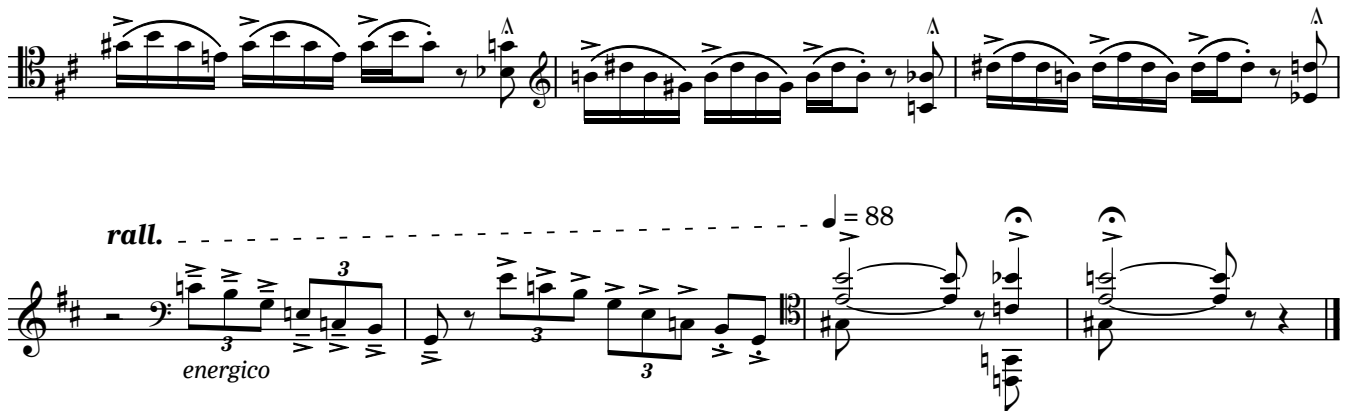
pp *p espr.* *f*

244

♩ = 88 ♩ = 138



ff *con slancio*



rall. ♩ = 88 *energico*

Con moto ♩ = 126
9 9 8 6 4 4 rit.

(rit.) **a tempo** Vln. I s.
rall. molto **Un poco agitato** ♩ = 138 S. vln.
ten. ten. p

ten. **un poco tratt.** ♩ = 112
2

a tempo ♩ = 138
mf p mp giocoso

rall.
p

[68] **un poco tratt.** ♩ = 112 rit. ♩ = 112 rit. . . ♩ = 112
S. vln. mf p mf p pp

[77] **rit.** . . . **Con moto** ♩ = 126
mf pp f espr. espr. molto

82
rall. *un poco tratt.* ♩ = 112
p cantabile *pp* *rall. molto*

89
Un poco agitato ♩ = 138
ff *p* *mf*

100
f *espr.*

104
rall. molto *al* ♩ = 84 *un poco tratt.* ♩ = 112
ff *mf espr. molto*

110

rit. *a tempo*
col legno **114**
mf

120
ord. *f*

123
rit. **Appassionato** ♩ = 168
ff

Vln. I-II

131

ff

140

appassionato

144

tratt. ♩ = 152 *rit.* *a tempo* ♩ = 168

148

152

156

ff

160

p *mf*

168

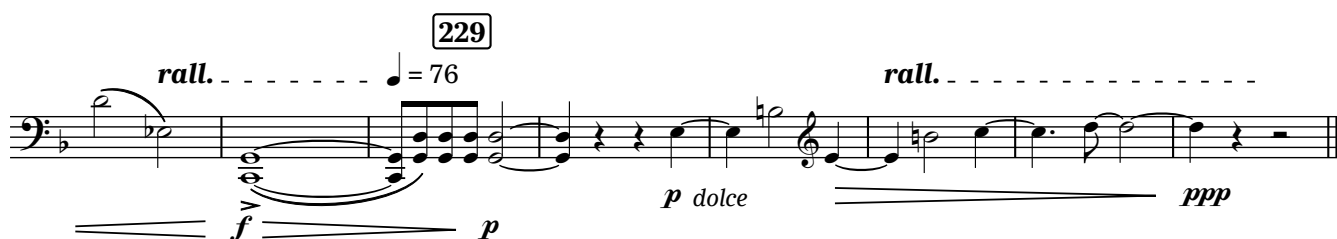
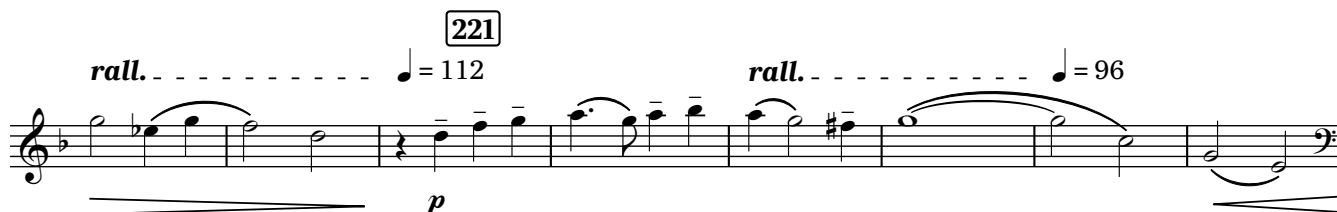
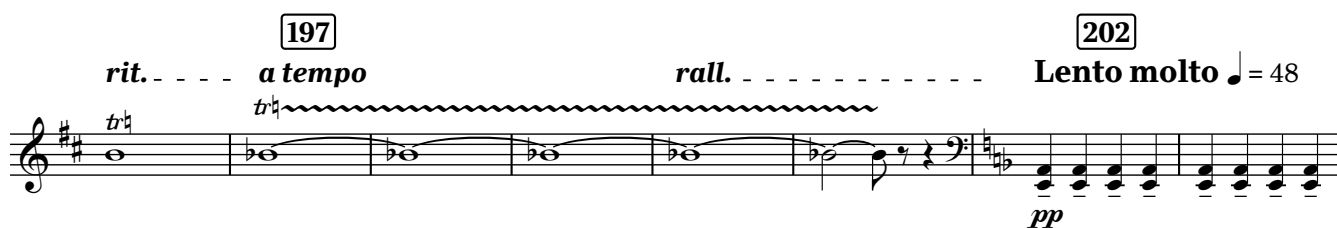
rall. *al* ♩ = 84 **Con moto** ♩ = 126

p *espr.*

177

S. vln.

p



III

Allegretto $\text{♩} = 88$ 8

7 8 S. vln. *mf*

24 *col legno* *mp*

33 *ord.* *mf*

pizz. 42 *f* arco *espr.*

52

57 *fff* 8

66

approximate realization
in the tempo of orchestra:

♩ = 76 (only for solo cello)

pizz.

segue

ff

73

Meno mosso ♩ = 76

p dolce

84

92

arco

*mf**f cantabile**mf**f*

3

mf

102

*p**mf**f*

110

Allegretto ♩ = 88

4

115

8

123

Vln. I sul pont. trem. *pp*

S. vln. sul pont. *p*

sul pont. *p*

pizz.

133

Allegro vivace ♩ = 152

arco *ff* *f marcato*

138

mf

142

f

tr

146

153

pizz. *ff* *mf*

Vln. I 159

f *ff* *ff*

arco *ff*

167 *impetuoso* *ten.* *p*

173 S. vln. *p* *mp espr.*

182 188 S. vln. *p* *mp* *mf*

193 *p* *mf più espr.* *f* *mp*

199 S. vln. *f* *mf* *f appassionato* 206

213 217 *p*

Vln. I 221 *p* *mp* *ff*

225 233 Vln. I *tr* *7*

240

ffz *ffz* *ffz* *ffz* *ffz* *ffz* *ffz* *ffz* *f*

S. vln. 246

250

254 *mf* *f* 258

262 *ff*

269 ten.

ten.

275 *poco rall.* *Allegretto* $\text{♩} = 88$
sul pont. - - - > ord.

281 *pp* *mp dolce*

289 *mf* *grazioso*

297 *f*

Vln. I 306 *f*

Vln. I pizz.

315 *un poco tratt.* ♩ = 76

320 *rit.* ----- *accel.* ----- *a tempo* ♩ = 88 *sfz*

325 *arco* *f* *tr* ----- *p* *rit.* -----

329 *a tempo* *S. vln.* *pizz.* *p* ----- *f*

337 *arco* *f* ----- *mf*

poco rit. ----- *p* ----- *ppp*