

# Solo cello

dedicated to László G. Horváth, Richárd Rózsa  
and the Anima Musicæ Chamber Orchestra

## Concerto antico

for violin, cello and string orchestra

### I

Tamás Beischer-Matyó

**Vivace** ♩ = 138

**Vln. I**  
*pp*

**Vla. harm.**  
*p*

**(8)**  
*p cantabile*

**32**  
*mf*

**41**  
*f*

**46**  
*ff*

**50**  
*appassionato*

**58**  
**10**

**68**  
**3**

*al niente*

Copyright Tamás Beischer-Matyó, 2020

[http://beischermatyó.hu/concerto\\_antico](http://beischermatyó.hu/concerto_antico)

This work is licensed under the Creative Commons Attribution-NonCommercial-NoDerivatives 4.0 International License.  
To view a copy of this license, visit <https://creativecommons.org/licenses/by-nc-nd/4.0/>

74

*rit.* - - - **Allegro moderato** ♩ = 88

Vla., Vc., D. b.

S. vln.

*ppp* *mp* *mp grazioso*

79

*mf*

83

87

*ff* *mf dolce*

91

*f*

*ff*

97

*ff*

**Vivo** ♩ = 112

*f risoluto*

*rit.* *ff*

*a tempo* ♩ = 112 106

*f*

*ff*

111

*rall.* ♩ = 76 116

*tr* *ten.* *ff* *mf*

*rit.* ♩ = 69 *tr* *ten.* *mp* *pp* *p* *p* *rall.*

125 *Adagio* ♩ = 63 *p espr.*

*rall.* ♩ = 60 *rall.* ♩ = 58 *ten.* *ten.* *rall.*

129 *dolcissimo*

*ten.* ♩ = 56 *rall.* ♩ = 54 *rall.* ♩ = 52 *pp* *ppp*

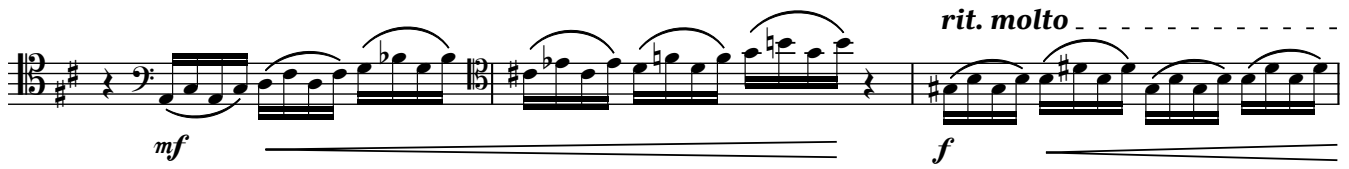
135 139 *Vivace* ♩ = 138 147 *8* *8*



220

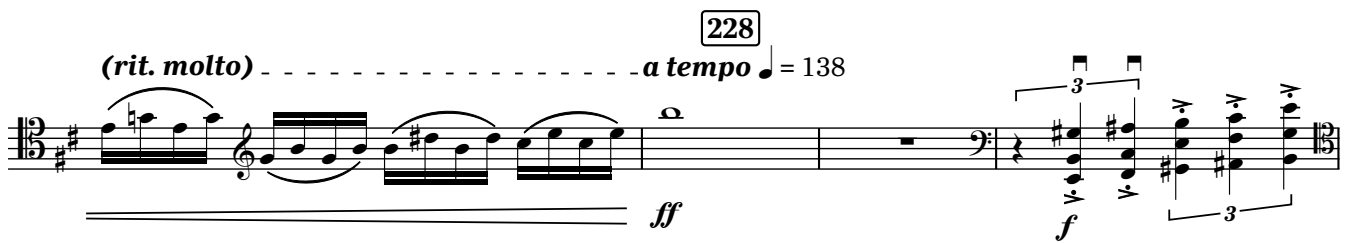


*p*



*mf* *rit. molto* *f*

228



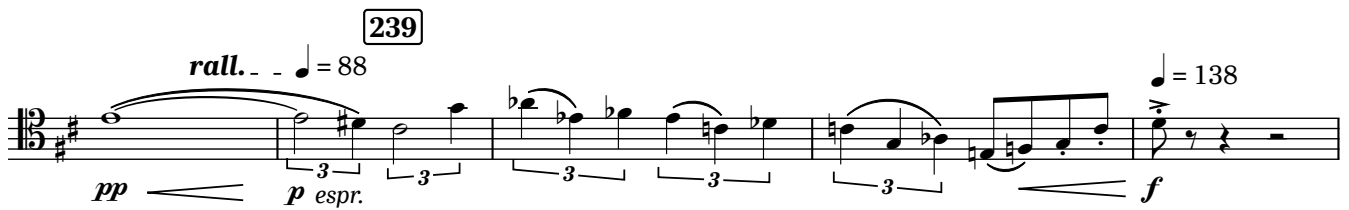
*ff* *(rit. molto)* *a tempo* ♩ = 138 *f*

234



*rall.* ♩ = 88 *a tempo* ♩ = 138 *p* *appassionato*

239

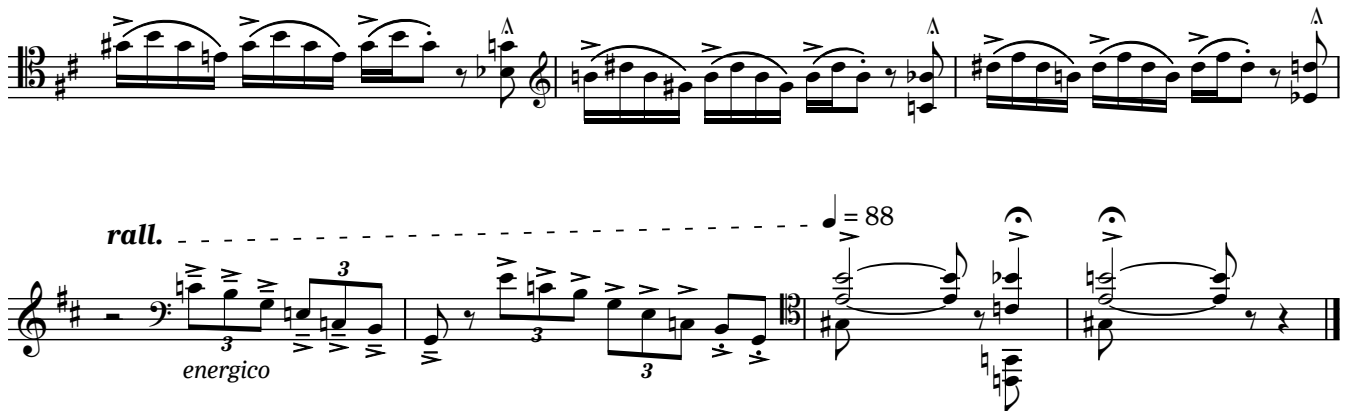


*pp* *rall.* ♩ = 88 *p espr.* *f* ♩ = 138

244



*ff* *con slancio* ♩ = 88 ♩ = 138



*rall.* ♩ = 88 *energico*

## II

**Con moto** ♩ = 126

9 10 19 27 33 37 *rit.*

9 9 8 6 4 4

(*rit.*) **a tempo** ♩ = 138

43 47

Vln. I s. S. vln.

*rall. molto* *Un poco agitato*

*p* *ten.* *ten.*

*ten.* **un poco tratt.** ♩ = 112

56

2

**a tempo** ♩ = 138

61

*mf* *p* *mp* *giocos*

*rall.*

3

*p*

68 **un poco tratt.** ♩ = 112

*rit.* ♩ = 112

S. vln.

*mf* *p* *mf* *p* *pp*

77 **rit.** **Con moto** ♩ = 126

*mf* *pp* *f* *espr.* *espr. molto*

**82**  
*rall.* . . . . . *un poco tratt.* ♩ = 112  
*p cantabile* *pp* *rall. molto* . . . . .

**89**  
**Un poco agitato** ♩ = 138  
*ff* *p* *mf*

**100**  
*f* *espr.*

**104**  
*rall. molto* . . . . . *al* ♩ = 84 *un poco tratt.* ♩ = 112  
*ff* *mf espr. molto*

**110**

*rit.* . . . . . *a tempo*  
*col legno* **114**  
*mf*

**120**  
*ord.* *f*

**123**  
*rit.* . . . . . **Appassionato** ♩ = 168  
*ff*

Vln. I-II

131

*ff*

140

*appassionato*

144

*tratt.* ♩ = 152      *rit.* . . . . . *a tempo* ♩ = 168

148

152

156

*ff*

160

*p*

*mf*

168

*rall.* . . . . . *al* ♩ = 84      **Con moto** ♩ = 126

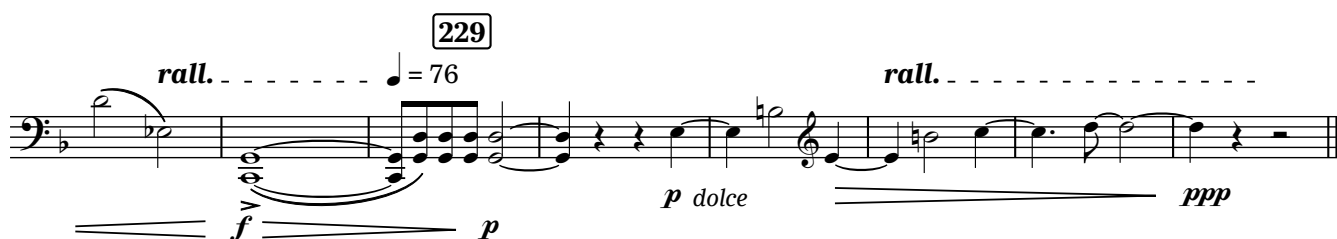
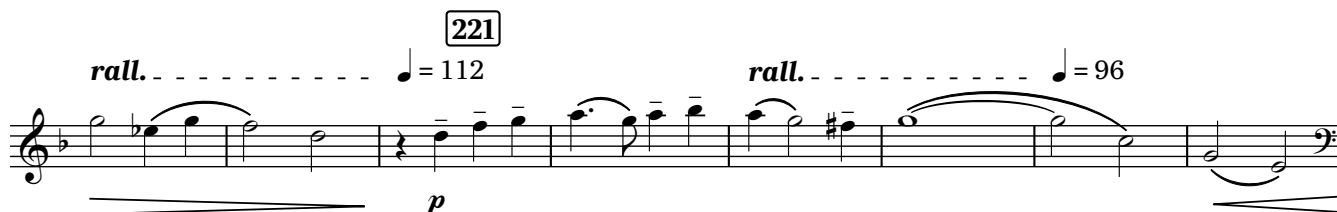
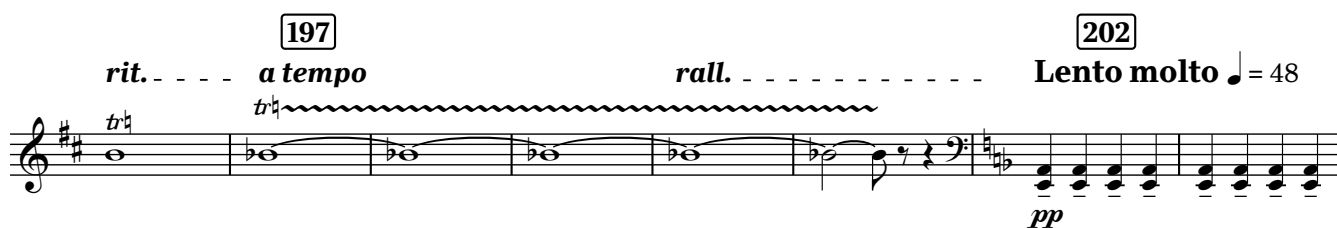
*p*      *espr.*

177

*S. vln.*

*p*





## III

Allegretto  $\text{♩} = 88$  8

7 8 S. vln. *mf*

24 *col legno* *mp*

33 *ord.* *mf*

pizz. 42 *f* arco *espr.*

52

57 *fff* 8

66

approximate realization  
in the tempo of orchestra:

♩ = 76 (only for solo cello)

pizz.

segue

*ff*

73

Meno mosso ♩ = 76

*p dolce*

84

92

arco

*mf**f cantabile**mf**f*

3

*mf*

102

*p**mf**f*

110

Allegretto ♩ = 88

4

115

8

123

Vln. I sul pont. trem. *pp*

S. vln. sul pont. *p*

sul pont. *p*

pizz.

133

**Allegro vivace** ♩ = 152

arco *ff* *f marcato*

138

*mf*

142

*f*

*tr*

146

153

pizz. *ff* *mf*

Vln. I 159

*f* *ff* *ff*

arco *ff*

167 *impetuoso* *ten.* *p*

173 S. vln. *p* *mp espr.*

182 188 S. vln. *p* *mp* *mf*

193 *p* *mf più espr.* *f* *mp*

199 S. vln. *f* *mf* *f appassionato* 206

213 217 *p*

Vln. I 221 *p* *mp* *ff*

225 233 Vln. I *tr* *7*

240

*ffz* *ffz* *ffz* *ffz* *ffz* *ffz* *ffz* *ffz* *f*

S. vln. 246

250

254 *mf* *f* 258

262 *ff*

269 ten.

ten.

275 *poco rall.* *Allegretto*  $\text{♩} = 88$   
sul pont. - - - > ord.

281 *pp* *mp dolce*

289 *mf* *grazioso*

297 *f*

Vln. I 306 *f*

Vln. I pizz.

315 *un poco tratt.* ♩ = 76

320 *rit.* ----- *accel.* ----- *a tempo* ♩ = 88 *sfz*

325 *arco* *f* *tr* ----- *p* *rit.* -----

329 *a tempo* *S. vln.* *pizz.* *p* ----- *f*

337 *arco* *f* ----- *mf*

*poco rit.* ----- *p* ----- *ppp*