

# Solo cello

dedicated to László G. Horváth, Richárd Rózsa  
and the Anima Musicæ Chamber Orchestra

## Concerto antico

for violin, cello and string orchestra

### I

Tamás Beischer-Matyó

**Vivace** ♩ = 138

Vln. I

*pp*

8

5

8

13

Vla. harm.

*p*

(8)

25

*p cantabile*

32

*mf*

41

*f*

46

*ff*

50

*appassionato*

58

10

68

3

*al niente*

Copyright Tamás Beischer-Matyó, 2020

[http://beischermatyó.hu/concerto\\_antico](http://beischermatyó.hu/concerto_antico)

This work is licensed under the Creative Commons Attribution-NonCommercial-NoDerivatives 4.0 International License.  
To view a copy of this license, visit <https://creativecommons.org/licenses/by-nc-nd/4.0/>

74

*rit.* - - - **Allegro moderato** ♩ = 88

Vla., Vc., D. b.

S. vln.

*ppp* *mp* *mp grazioso*

79

*mf*

83

*ff*

87

*mf dolce*

91

*f*

*ff*

97

*ff*

**Vivo** ♩ = 112

*f risoluto*

*ff*

*rit.* - - - - -

*a tempo* ♩ = 112 106

*f*

*ff*

*rall.* ♩ = 76 116

*tr* *mf*

*rit.* ♩ = 69 *tr* *ten.* *mp* *pp* *p* *p* *rall.*

125 *Adagio* ♩ = 63 *p espr.*

*rall.* ♩ = 60 *rall.* ♩ = 58 *ten.* *ten.* *rall.*

129 *dolcissimo*

*ten.* ♩ = 56 *rall.* ♩ = 54 *rall.* ♩ = 52 *pp* *ppp*

135 139 *Vivace* ♩ = 138 147 *8* *8*

Vln. I

**157**

*f*

*f appassionato*

**162**

**171**

**180**

**188**

**195**

*ff*

**203**

**210**

*p*

*f*  $\curvearrowright$  *ff*

*marcato*

*tr.*

*ten.*

*f espr.*

*p*

*p*

*p*

220

*p*

*mf*

*rit. molto*

*f*

228

(*rit. molto*)

*a tempo* ♩ = 138

*ff*

*f*

234

*rall.* ♩ = 88

*a tempo* ♩ = 138

*p*

*appassionato*

239

*rall.* ♩ = 88

*pp*

*p espr.*

♩ = 138

*f*

244

♩ = 88

♩ = 138

*ff*

*con slancio*

*rall.*

♩ = 88

*energico*

## II

**Con moto** ♩ = 126

9 10 19 27 33 37 *rit.*

9 9 8 6 4 4

(*rit.*) **a tempo** ♩ = 138

43 47

Vln. I s. S. vln.

*rall. molto* *Un poco agitato*

*p* *ten. ten.*

*ten.* **un poco tratt.** ♩ = 112

56

2

**a tempo** ♩ = 138

61

*mf* *p* *mp* *giocoso*

*rall.*

*p*

68 **un poco tratt.** ♩ = 112

*rit.* ♩ = 112

S. vln.

*mf* *p* *mf* *p* *pp*

77 **rit.** **Con moto** ♩ = 126

*mf* *pp* *f* *espr.* *espr. molto*

**82**  
*rall.* . . . . . *un poco tratt.* ♩ = 112  
*p cantabile* *pp* *rall. molto* . . . . .

**89**  
**Un poco agitato** ♩ = 138  
*ff* *p* *mf*

**100**  
*f* *espr.*

**104**  
*rall. molto* . . . . . *al* ♩ = 84 *un poco tratt.* ♩ = 112  
*ff* *mf espr. molto*

**110**

*rit.* . . . . . *a tempo*  
*col legno* **114**  
*mf*

**120**  
*ord.* *f*

**123**  
*rit.* . . . . . **Appassionato** ♩ = 168  
*ff*

Vln. I-II

**131** *ff*

**140** *appassionato*

**144** *tratt.* ♩ = 152 *rit.* . . . . *a tempo* ♩ = 168

**148**

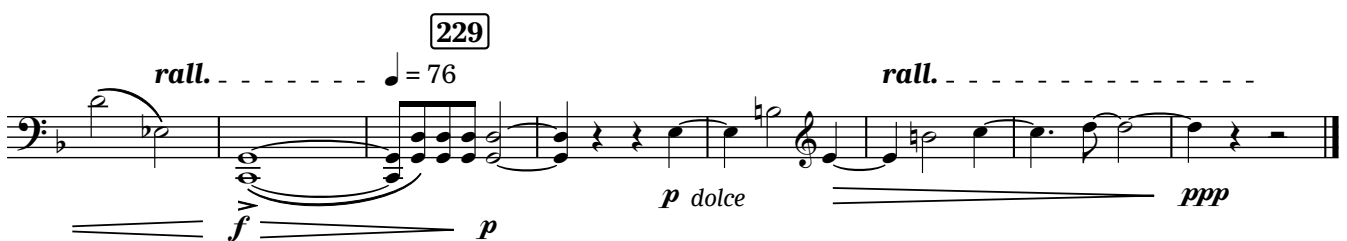
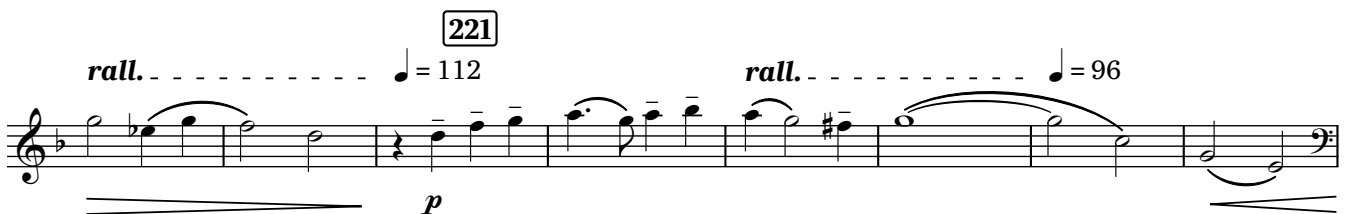
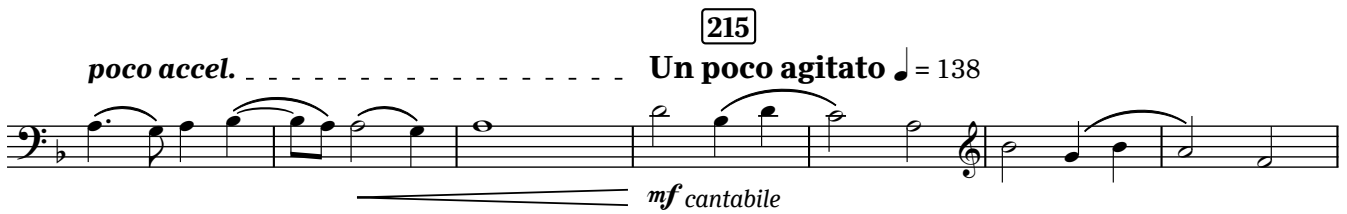
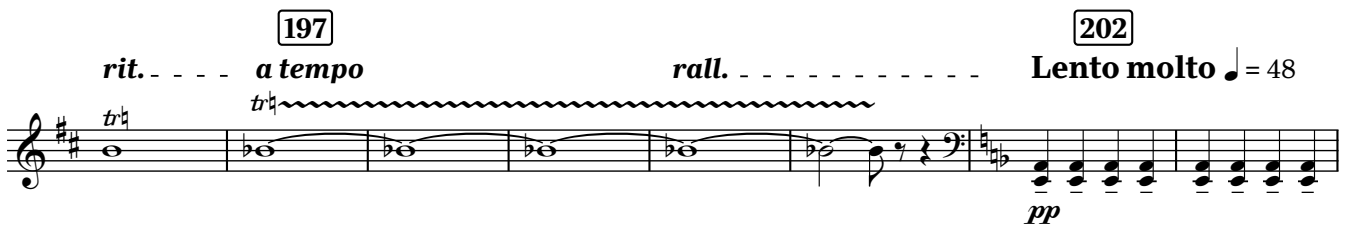
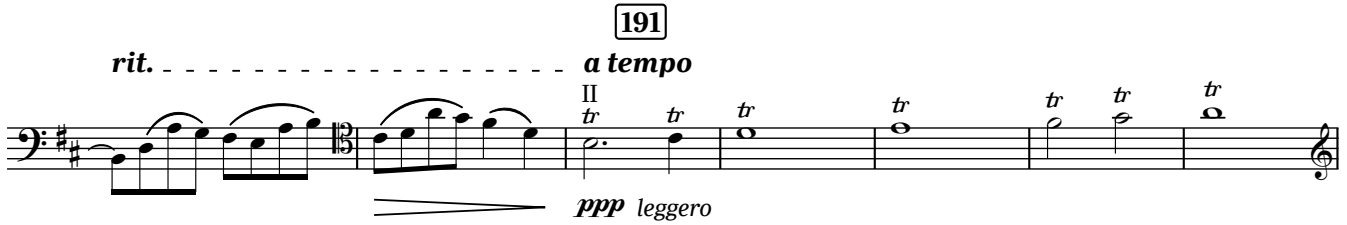
**152**

**156** *ff* **160** *p* *mf*

**168** *rall.* . . . . *al* ♩ = 84 *Con moto* ♩ = 126 *p* *espr.*

**177** *p* S. vln.





**Allegretto**  $\text{♩} = 88$  8 16

The image shows a single musical staff for the 57th measure of a piece. The staff is in bass clef with a key signature of three sharps (F#, C#, G#). The measure contains a sequence of eighth and sixteenth notes, mostly beamed together. A double bar line is present. Above the staff, the number '57' is enclosed in a box. Below the staff, there is a 'fff' dynamic marking and a fermata symbol over a whole note.

66

approximate realization  
in the tempo of orchestra:

♩ = 76 (only for solo cello)

pizz.

segue

*ff*

73

Meno mosso ♩ = 76

*p dolce*

84

92

arco

*mf**f cantabile**mf**f*

3

*mf*

102

*p**mf**f*

110

Allegretto ♩ = 88

4

115

8

123

Vln. I sul pont. trem. *pp*

S. vln. sul pont. *p*

sul pont. *p*

pizz.

133

**Allegro vivace** ♩ = 152

arco *ff* *f marcato*

138

*mf*

142

*f*

*tr*

146

153

pizz. *ff* *mf*

Vln. I 159

*f* *ff* *ff*

arco *ff*

167 *impetuoso* *ten.* *p*

173 S. vln. *p* *mp espr.*

182 188 S. vln. *p* *mp* *mf*

193 *p* *mf più espr.* *f* *mp*

199 S. vln. *f* *mf* *f appassionato* 206

213 217 *p*

Vln. I 221 *p* *mp* *ff*

225 233 Vln. I *tr* *7*

240 *ffz* *ffz* *ffz* *ffz* *ffz* *ffz* *ffz* *ffz* *f*

246 S. vln. *p*

250

254 *mf* *f* 258

262 *ff*

269 *impetuoso*

ten. ten.

275 *poco rall.* *Allegretto*  $\text{♩} = 88$   
sul pont. - - - > ord.

281 *pp* *mp dolce*

289 *mf* *grazioso*

297 *f*

Vln. I 306 *f*

Vln. I pizz.

315 *un poco tratt.* ♩ = 76

320 *rit.* ----- *accel.* ----- *a tempo* ♩ = 88 *sfz*

325 *arco* *f* *tr* ----- *p* *rit.* -----

329 *a tempo* *S. vln.* *pizz.* *p* ----- *f*

337 *arco* *f* ----- *mf*

*poco rit.* ----- *p* ----- *ppp*