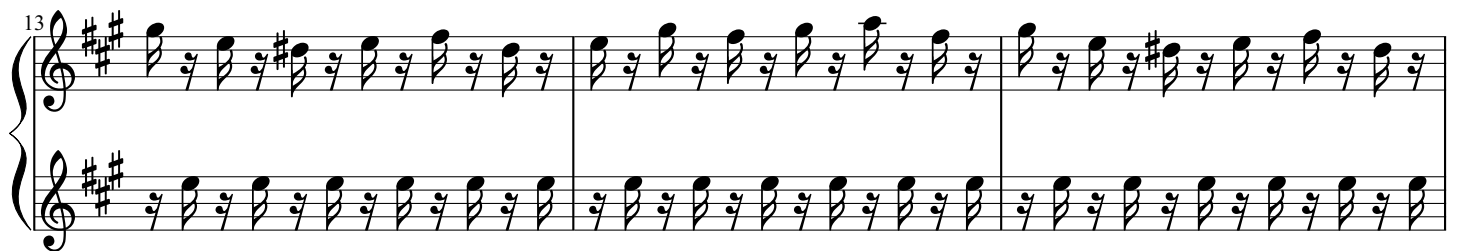
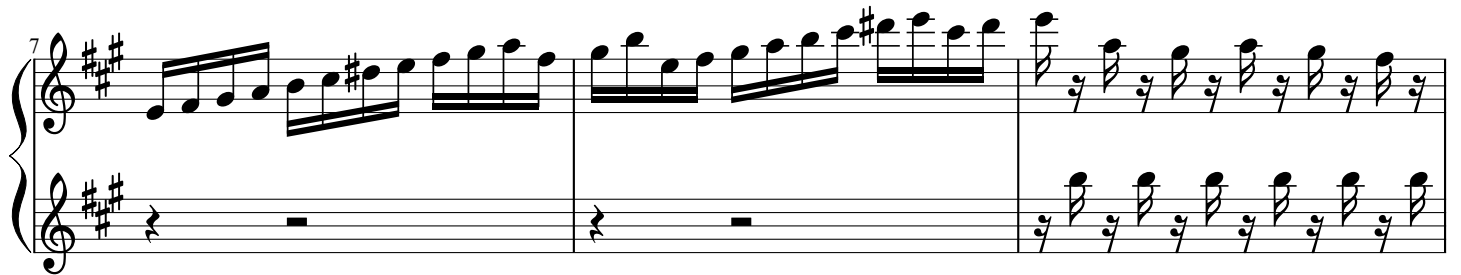
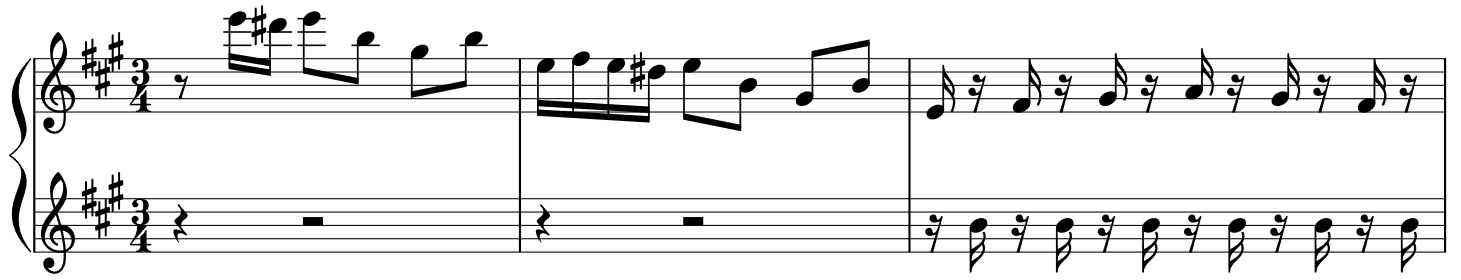


BWV 1006 (Prelude)

Arranged for piano solo by RSB



16

Measures 16-18. Treble and bass staves in D major. Measures 16-17 have a whole rest in the treble staff. Measure 18 has a whole rest in the bass staff.

19

Measures 19-21. Treble and bass staves in D major. Measures 19-20 have a whole rest in the treble staff. Measure 21 has a whole rest in the bass staff.

22

Measures 22-24. Treble and bass staves in D major. Measures 22-23 have a whole rest in the treble staff. Measure 24 has a whole rest in the bass staff.

25

Measures 25-27. Treble and bass staves in D major. Measures 25-26 have a whole rest in the treble staff. Measure 27 has a whole rest in the bass staff.

28

Measures 28-30. Treble and bass staves in D major. Measures 28-29 have a whole rest in the treble staff. Measure 30 has a whole rest in the bass staff.

31

34

37

40

43

46

48

50

53

55

58

Measures 58-60. Treble clef: 58 (F#4, A#4, C#5), 59 (F#4, A#4, C#5), 60 (F#4, A#4, C#5). Bass clef: 58 (F#3, A#3, C#4), 59 (F#3, A#3, C#4), 60 (F#3, A#3, C#4).

61

Measures 61-63. Treble clef: 61 (F#4, A#4, C#5), 62 (F#4, A#4, C#5), 63 (F#4, A#4, C#5). Bass clef: 61 (F#3, A#3, C#4), 62 (F#3, A#3, C#4), 63 (F#3, A#3, C#4).

64

Measures 64-65. Treble clef: 64 (F#4, A#4, C#5), 65 (F#4, A#4, C#5). Bass clef: 64 (F#3, A#3, C#4), 65 (F#3, A#3, C#4).

66

Measures 66-67. Treble clef: 66 (F#4, A#4, C#5), 67 (F#4, A#4, C#5). Bass clef: 66 (F#3, A#3, C#4), 67 (F#3, A#3, C#4).

68

Measures 68-69. Treble clef: 68 (F#4, A#4, C#5), 69 (F#4, A#4, C#5). Bass clef: 68 (F#3, A#3, C#4), 69 (F#3, A#3, C#4).

70

72

74

76

78

81

Measures 81-83. Treble clef, key of D major (two sharps). The right hand plays a continuous eighth-note melody. The left hand has whole rests.

84

Measures 84-86. Treble clef, key of D major (two sharps). The right hand continues the eighth-note melody. The left hand has whole rests.

87

Measures 87-89. Treble clef, key of D major (two sharps). The right hand continues the eighth-note melody. The left hand has whole rests.

90

Measures 90-92. Treble clef, key of D major (two sharps). The right hand continues the eighth-note melody. The left hand has whole rests.

93

Measures 93-95. Treble clef, key of D major (two sharps). The right hand continues the eighth-note melody. The left hand has whole rests.

96

Measures 96-98. Treble clef: 96 (F#4, G#4, A4, B4, C5, B4, A4, G#4), 97 (F#4, G#4, A4, B4, C5, B4, A4, G#4), 98 (F#4, G#4, A4, B4, C5, B4, A4, G#4). Bass clef: 96 (rest), 97 (F#3, G#3, A3, B3, C4, B3, A3, G#3), 98 (F#3, G#3, A3, B3, C4, B3, A3, G#3).

99

Measures 99-101. Treble clef: 99 (F#4, G#4, A4, B4, C5, B4, A4, G#4), 100 (F#4, G#4, A4, B4, C5, B4, A4, G#4), 101 (F#4, G#4, A4, B4, C5, B4, A4, G#4). Bass clef: 99 (F#3, G#3, A3, B3, C4, B3, A3, G#3), 100 (rest), 101 (rest).

102

Measures 102-104. Treble clef: 102 (F#4, G#4, A4, B4, C5, B4, A4, G#4), 103 (F#4, G#4, A4, B4, C5, B4, A4, G#4), 104 (F#4, G#4, A4, B4, C5, B4, A4, G#4). Bass clef: 102 (rest), 103 (rest), 104 (rest).

105

Measures 105-107. Treble clef: 105 (F#4, G#4, A4, B4, C5, B4, A4, G#4), 106 (F#4, G#4, A4, B4, C5, B4, A4, G#4), 107 (F#4, G#4, A4, B4, C5, B4, A4, G#4). Bass clef: 105 (rest), 106 (rest), 107 (rest).

108

Measures 108-110. Treble clef: 108 (F#4, G#4, A4, B4, C5, B4, A4, G#4), 109 (F#4, G#4, A4, B4, C5, B4, A4, G#4), 110 (F#4, G#4, A4, B4, C5, B4, A4, G#4). Bass clef: 108 (F#3, G#3, A3, B3, C4, B3, A3, G#3), 109 (F#3, G#3, A3, B3, C4, B3, A3, G#3), 110 (F#3, G#3, A3, B3, C4, B3, A3, G#3).

110

Measures 110-112. Treble clef: Measure 110 has eighth notes (F#4, G#4, A4, B4, C5, B4, A4, G#4, F#4). Measure 111 has a sixteenth-note triplet (A4, B4, C5) followed by eighth notes (B4, A4, G#4, F#4). Measure 112 has eighth notes (F#4, G#4, A4, B4, C5, B4, A4, G#4, F#4). Bass clef: Measure 110 has eighth notes (F#3, G#3, A3, B3, C4, B3, A3, G#3, F#3). Measure 111 has a whole rest followed by eighth notes (F#3, G#3, A3, B3, C4, B3, A3, G#3, F#3). Measure 112 has eighth notes (F#3, G#3, A3, B3, C4, B3, A3, G#3, F#3).

113

Measures 113-115. Treble clef: Measure 113 has eighth notes (F#4, G#4, A4, B4, C5, B4, A4, G#4, F#4). Measure 114 has eighth notes (F#4, G#4, A4, B4, C5, B4, A4, G#4, F#4). Measure 115 has eighth notes (F#4, G#4, A4, B4, C5, B4, A4, G#4, F#4). Bass clef: Measure 113 has a whole rest. Measure 114 has eighth notes (F#3, G#3, A3, B3, C4, B3, A3, G#3, F#3). Measure 115 has a whole rest.

116

Measures 116-118. Treble clef: Measure 116 has eighth notes (F#4, G#4, A4, B4, C5, B4, A4, G#4, F#4). Measure 117 has eighth notes (F#4, G#4, A4, B4, C5, B4, A4, G#4, F#4). Measure 118 has eighth notes (F#4, G#4, A4, B4, C5, B4, A4, G#4, F#4). Bass clef: Measure 116 has eighth notes (F#3, G#3, A3, B3, C4, B3, A3, G#3, F#3). Measure 117 has a whole rest. Measure 118 has eighth notes (F#3, G#3, A3, B3, C4, B3, A3, G#3, F#3).

119

Measures 119-121. Treble clef: Measure 119 has eighth notes (F#4, G#4, A4, B4, C5, B4, A4, G#4, F#4). Measure 120 has eighth notes (F#4, G#4, A4, B4, C5, B4, A4, G#4, F#4). Measure 121 has eighth notes (F#4, G#4, A4, B4, C5, B4, A4, G#4, F#4). Bass clef: Measure 119 has a whole rest. Measure 120 has a whole rest. Measure 121 has a whole rest.

122

Measures 122-124. Treble clef: Measure 122 has eighth notes (F#4, G#4, A4, B4, C5, B4, A4, G#4, F#4). Measure 123 has eighth notes (F#4, G#4, A4, B4, C5, B4, A4, G#4, F#4). Measure 124 has eighth notes (F#4, G#4, A4, B4, C5, B4, A4, G#4, F#4). Bass clef: Measure 122 has a whole rest. Measure 123 has a whole rest. Measure 124 has a whole rest.

125

Measures 125-127. The right hand plays a continuous eighth-note melody in A major, while the left hand plays whole rests.

128

Measures 128-130. The right hand continues the eighth-note melody, and the left hand begins a steady eighth-note accompaniment.

131

Measures 131-133. The right hand continues the eighth-note melody, and the left hand continues the steady eighth-note accompaniment.

134

Measures 134-136. The right hand continues the eighth-note melody, and the left hand continues the steady eighth-note accompaniment.

137

Measures 137-138. The right hand continues the eighth-note melody, and the left hand continues the steady eighth-note accompaniment.