

Praeludium et Fuga IV

BWV 873

J. SEBASTIAN BACH

PETER H. BESSELING

4

7

10

13

16

20

23

26

29

31

Praeludium et Fuga IV - PIANO I

3

34

37

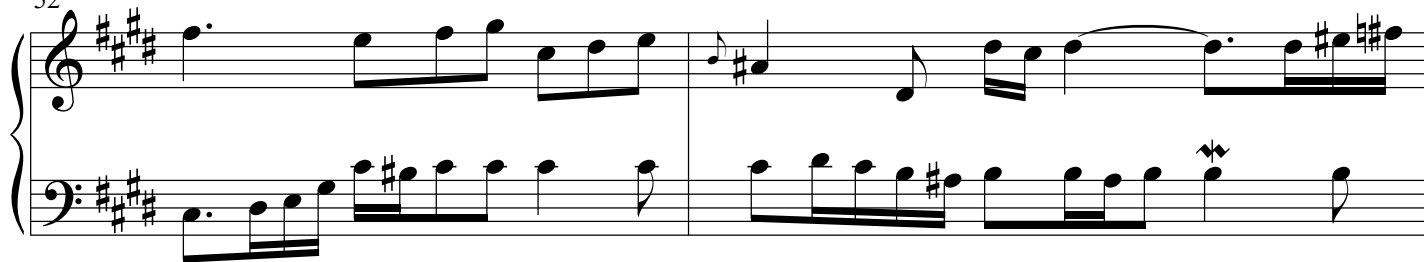
40

43

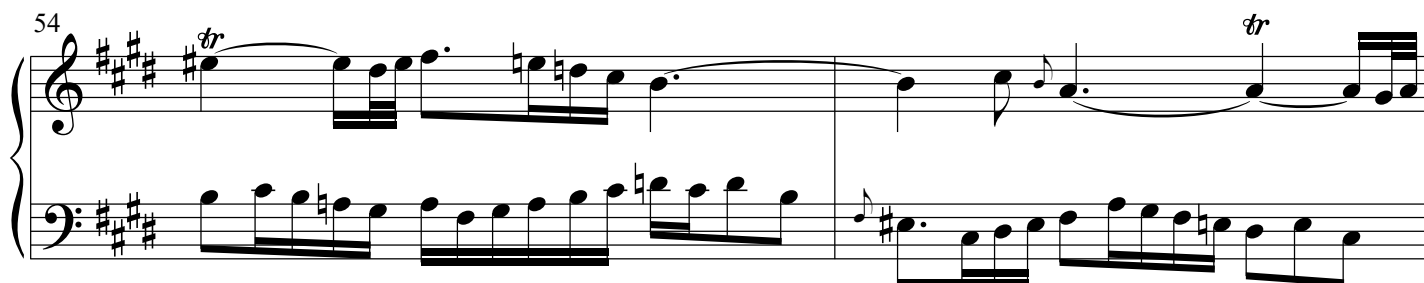
46

49

52



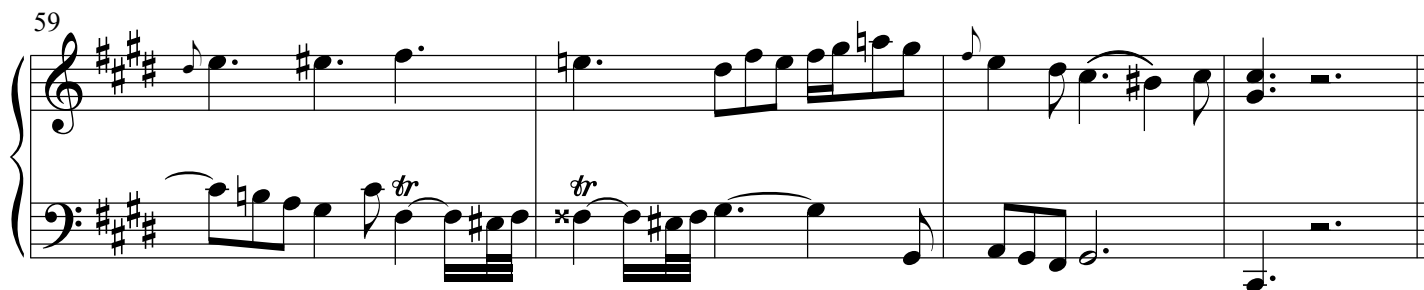
54



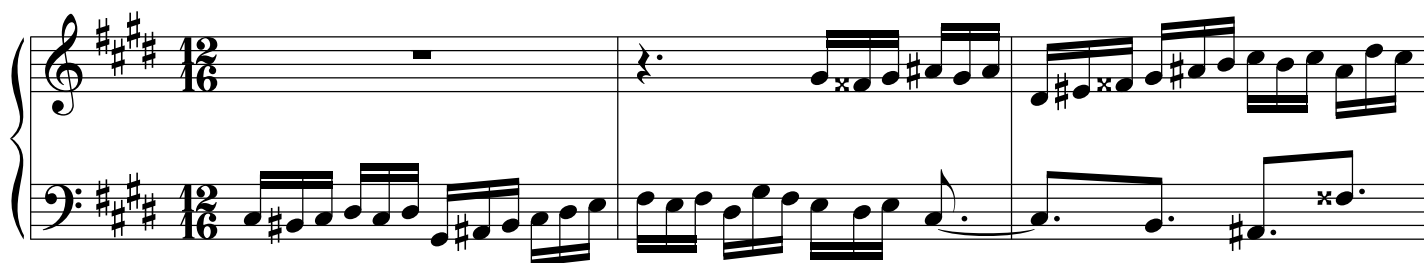
56



59



Fuga



4



Praeludium et Fuga IV - PIANO I

5

8

11

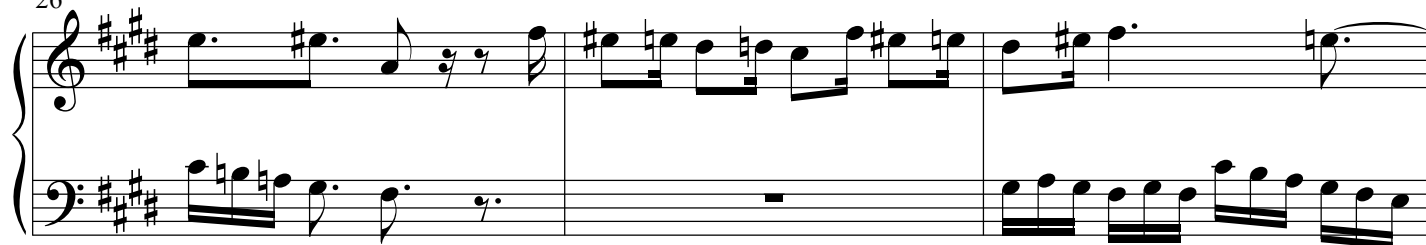
14

17

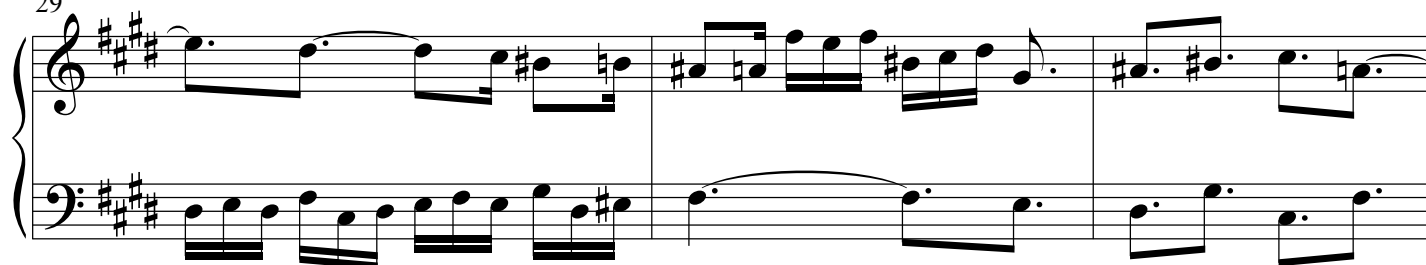
20

23

26



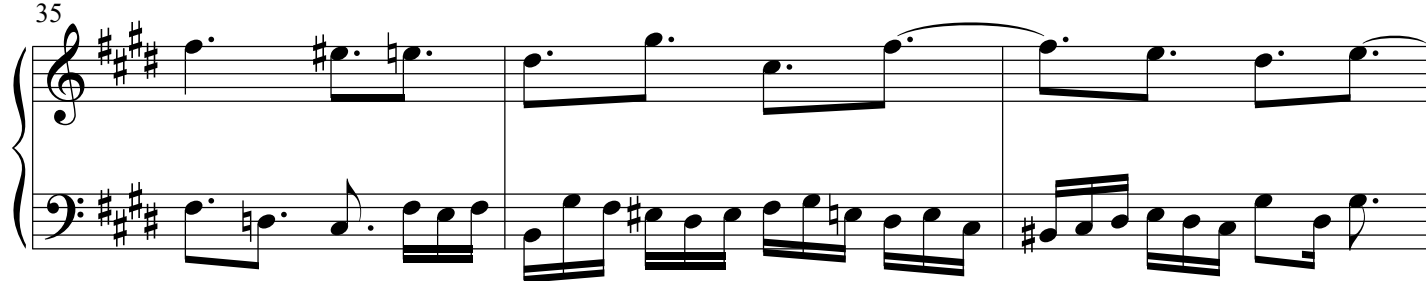
29



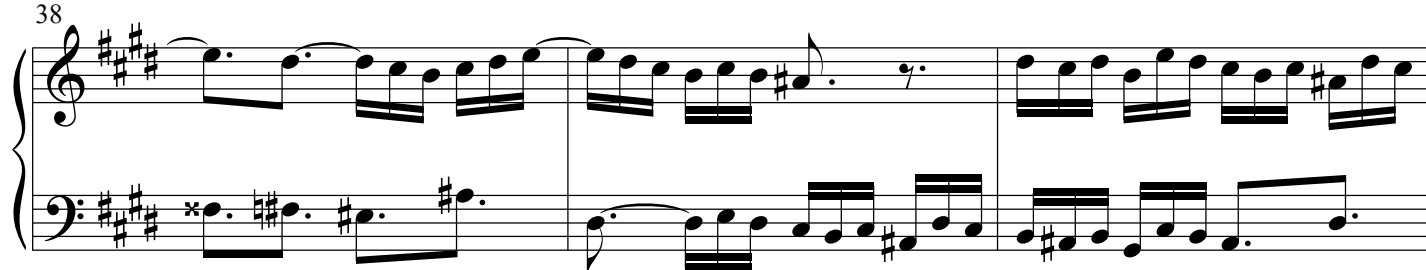
32



35



38



41



Praeludium et Fuga IV - PIANO I

7

44

Measures 44-46. Treble clef: eighth-note runs, quarter rest. Bass clef: dotted half note, eighth-note patterns.

47

Measures 47-49. Treble clef: half note, eighth-note runs. Bass clef: eighth-note runs, dotted half note.

50

Measures 50-52. Treble clef: eighth-note runs, dotted half note. Bass clef: eighth-note runs, dotted half note.

53

Measures 53-55. Treble clef: half note, eighth-note runs. Bass clef: eighth-note runs, dotted half note.

56

Measures 56-58. Treble clef: half note, eighth-note runs. Bass clef: eighth-note runs, dotted half note.

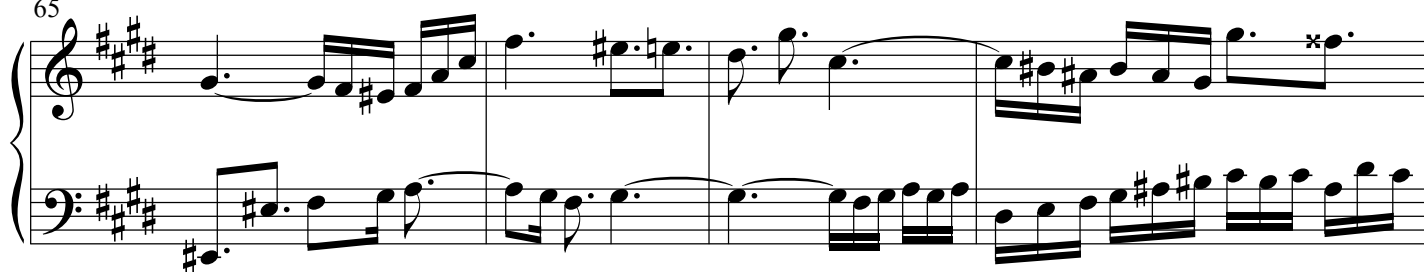
59

Measures 59-61. Treble clef: eighth-note runs, trill. Bass clef: half note, eighth-note runs.

62



65



69

