

Symphonie en si bémol

Violon 1

François-Joseph GOSSEC

I

Allegro Maestoso

6

12

19

26

32

38

47

57

f *ff* *p* *f* *ff* *p* *f*

4 5

64

69

74

82

87

93

99

106

114

121

f *p* *f*

4

This page contains the musical score for the first violin (Violon 1) from measures 64 to 121. The music is written in treble clef with a key signature of two flats (B-flat and E-flat). The score includes various musical notations such as eighth notes, sixteenth notes, and triplets, as well as dynamic markings like *f* (forte) and *p* (piano). The measures are numbered at the beginning of each line: 64, 69, 74, 82, 87, 93, 99, 106, 114, and 121. The final measure (121) is marked with a '4' above it, indicating a fourth ending or a specific measure count.

131

139

145

151

156

166

174

180

186

ff *ff* *p* *f* *f* *f* *f* *f* *f* *f*

II Larghetto Siciliana Pantomina

4

10

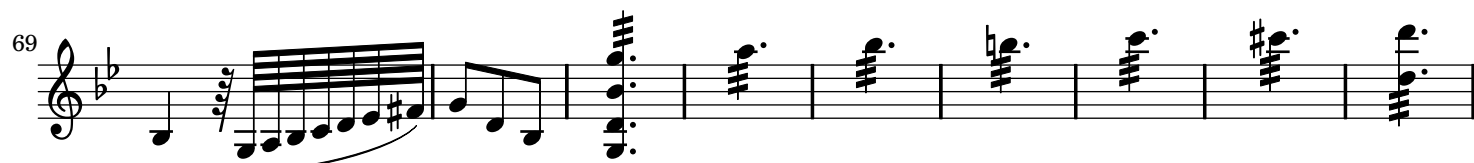
13

f

Violon 1 score, measures 16 to 52. The score is written for Violon 1 in G major (one sharp) and 4/4 time. The key signature is one sharp (F#). The score includes various musical notations such as eighth notes, sixteenth notes, and rests. Dynamic markings include *ff* (fortissimo) and *p* (piano). The score is divided into systems, with measures 16, 20, 23, 26, 28, 29, 31, 34, 37, 41, 44, 47, and 52 marked at the beginning of their respective staves.

III

Non Presto



78 

89 

97 

104 

113 

121 

131 

141 

148 