

Orchestra 2  
Viola

Louis Spohr  
(1784-1859)

Symphony No.7  
Op. 121

# I. Kinderwelt

Louis Spohr  
(1784-1859)

## Introduzione. Adagio ♩=108

11 *pizz.*  
*mf f dim. p mf p*

## poco rit. Allegretto ♩=138

26 *mf p* Vln.1 6

40 *arco f* 4 Vln.1 *f*

55 *> p f f pp* A

66 *f p* B

78 *pizz.*  
*f*

85 *Fl.* *p* *arco pp*

92 *cresc. f p f p*

99 *f p f p f p f p*

105 *f p f p f p f p f p*

111 *f* 3 2 Vln.1 3 3 3 3 3 3 3 3

118 *pizz. f p f p mf* 4

129 1. 2 Vln.1 2

136



151

D



162

6

Vln. 1

6

Vln. 1



181

arco

4

Vln. 1



195

&gt; p

f

f

pp



207



216 E

pizz.

Fl.

p



227

arco

pp



235



243



250



257 F

2

Vln. 1

pizz.

f

p



267

arco

4

arco

3

f

p

mf

p

3 cresc.

3



276



## II. Zeit der Leidenschaften

1 **Larghetto** (♩=96)  
arco  
*pp* *cresc.* *dim.*

9 *p* *cresc.* *p* *< >* Ob. *pp*

16 5 cl. *p*

26 *pp*

33 *sfz* *p* *sfz* Vln. 1

38 **poco a poco stringendo** *pizz.* *f*

41 **Allegro moderato** (♩=120)  
arco  
*p*

47 *(p) cresc.* *pizz.* *p* *f* *arco* *p*

54 *pp* *pp* *cresc.*

60 *f* *p* *< f >* *p* *< f >* *p* *< f >* *p*

68 **B**

75

81

85 4 Vln. 1

92 **C**

*f* 3 3 3

100

tr tr

105

3 3 *pp*

111 **D**

7 Ob. *p* 3

124

3 3 *f* 3 3 3

131 **E**

*(p)* *f* 3 3

140

3 3 *p* *p*

148

4 Vin. 1 *pizz.* *f*

156

*arco* *p*

161

*pizz.* *(p) cresc.* *(f)* *p* *f*

167 **F** *arco* 6 6 *pp*

174

180

186

4

6

193 *Vln.1* **G**  
*ff* 3 3

201

201 3 *tr*

208

208 3 3 *pp* 3 3

215 **H**

215 **4**  
*Db Hn.2* 3 3 3 3 3 3 3 3 3 3 3 3

224

224 *pizz.* *arco*  
*p* *f* (*p*)

231

231 *pp* <

236

236 *fp* *fp* *fp* *fp* *fp* *fp* *fp* *fp* *f*

242 **J**

242 **J**

253

253 *dim.* *Bsn.* *pp*

261

261 *f*

267

267 *ff*

## III. Endlicher Sieg des Göttlichen

1 **Presto** ♩.=96

7

13

18 **A**

26

31

37

48

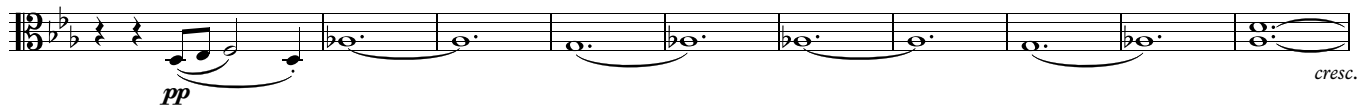
54

60

2

Fl.

8

67 **B**

77



83



89



95

**C**

101



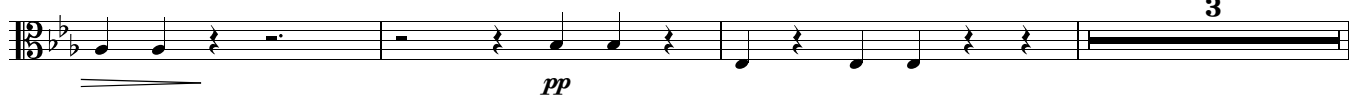
124



130



133



139

**D**

144



155



161



170

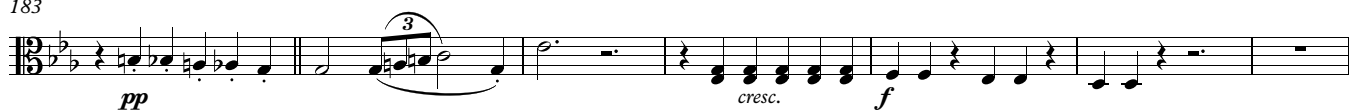
**E**

175





183



190



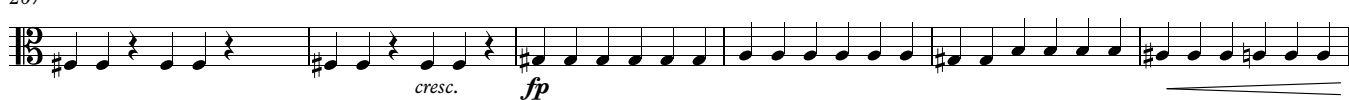
197



202



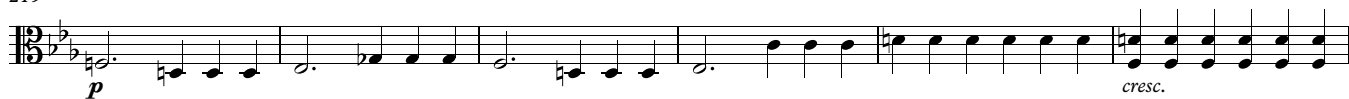
207



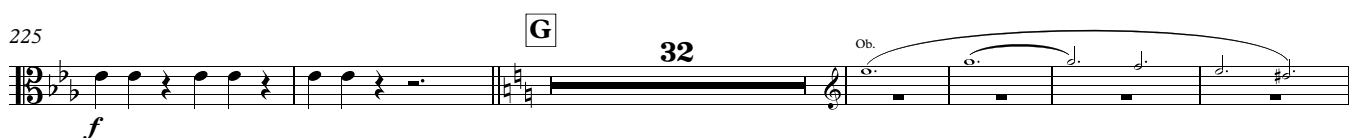
213



219



225



263



271



277



282



## 310 Adagio (♩=132)

310 *pp* *cresc.* *ff* *pp*

317

323 *p* *cresc.* *ff*

329 *pp*

335 *cresc.* Vln. 1

341 *pp* *cresc.* *ff* *pp*

348

353 *p* *pp*

The musical score for the Viola part of Orchestra 2, measures 310 to 353, is presented in 12/8 time with an Adagio tempo of 132 beats per minute. The notation includes various dynamics such as *pp* (pianissimo), *cresc.* (crescendo), *ff* (fortissimo), and *p* (piano). Articulation marks like accents and slurs are used throughout. A first violin (Vln. 1) entry is indicated at measure 335. The score is divided into systems, with measures 310-317, 317-323, 323-329, 329-335, 335-341, 341-348, and 348-353.